

LEGEND OF ELECTRICAL SYMBOLS		SYMBOL DESCRIPTION	
	CONDUIT RUN CONCEALED IN WALLS OR ABOVE CEILING. ARROW INDICATES HOMERUN TO PANEL. CONDUIT DESIGNATIONS ARE AS FOLLOWS: LONG HATCH INDICATES NEUTRAL, SHORT HATCH INDICATES PHASE. "DOT" INDICATES INSULATED OR ISOLATED GROUND, AND NO HATCHES INDICATES TWO CONDUCTORS.		REMOTE LIGHTING BALLAST/TRANSFORMER FOR LIGHTING
	CONDUIT RUN CONCEALED IN FLOOR SLAB, BELOW FLOOR SLAB OR BELOW GRADE. WIRING SAME AS ABOVE.		TELEPHONE GROUND BUS
	SCREENING SHADE INDICATES FIXTURE CONNECTION ON EMERGENCY OR NIGHT LIGHT CIRCUIT.		MAIN TELEPHONE GROUND BUS
	EXIT LIGHT. PROVIDE ARROWS AS INDICATED ON DRAWINGS.		MAIN ELECTRICAL GROUND BUS
	SIMPLEX RECEPTACLE OUTLET, 20 AMP, 125V, 3 WIRE, GROUNDED TYPE.		TRANSFORMER W/ NEC CLEARANCES; REFER TO DWG FOR VOLTAGE/V
	DUPLEX RECEPTACLE OUTLET, 20 AMP, 125V, 3 WIRE, GROUNDED TYPE.		SURFACE PANELBOARD W/ NEC CLEARANCES; 120/208 VOLT.
	QUADRUPLEX RECEPTACLE OUTLET GANGED WITH A COMMON WALL PLATE, (2) 20 AMP, 125V, 3 WIRE, GROUNDED TYPE.		SURFACE PANELBOARD W/ NEC CLEARANCES; 277/480 VOLT.
	DUPLEX RECEPTACLE OUTLET LOCATED ABOVE SPLASH ABOVE COUNTER, 20 AMP, 125V, 3 WIRE GROUNDED TYPE. REFER TO ARCHITECTURAL DRAWINGS FOR EXACT HEIGHT.		RECESS PANELBOARD W/ NEC CLEARANCES; 120/208 VOLT.
	DUPLEX RECEPTACLE OUTLET WITH GROUND FAULT INTERRUPTER; 20 AMP, 125V, 3 WIRE GROUNDED TYPE.		RECESS PANELBOARD W/ NEC CLEARANCES; 277/480 VOLT.
	DUPLEX RECEPTACLE OUTLET W/ WEATHERPROOF WHILE IN USE COVER; GROUND FAULT INTERRUPTER; 20 AMP, 125V, 3 WIRE, GROUNDED TYPE.	NOTES: 1. ALL SYMBOLS MAY NOT BE USED ON THESE DRAWINGS. 2. REFER TO ARCHITECTURAL DRAWINGS FOR MOUNTING HEIGHTS	
	SPECIAL RECEPTACLE OUTLET: SEE DRAWINGS FOR NEMA CONFIGURATION AND VOLTAGE.	ABBREVIATIONS	
	FLUSH MOUNTED FIRE RATED POKE THRU DEVICE FOR FURNITURE FEED. SEE DRAWINGS FOR SPECIFICATIONS.	(E)	EXISTING TO REMAIN
	FLUSH MOUNTED FIRE RATED THRU DEVICE W/ RECEPTACLE(S) AND/OR DATA AND/OR TELEPHONE. SEE DRAWINGS FOR SPECIFICATIONS.	(N)	NEW
	FLUSH MOUNTED FLOOR BOX W/ RECEPTACLE(S) AND/OR DATA AND/OR TELEPHONE. SEE DRAWINGS FOR SPECIFICATIONS.	(R)	ITEM NOTED TO BE RELOCATED
	POWER POLE PROVIDED BY OTHERS. RE: DRAWINGS FOR MORE INFORMATION.	(D)	ITEM NOTED TO BE DEMOLISHED
	TELEPHONE OUTLET.	AF	ABOVE FINISHED FLOOR
	CABLE T.V. OUTLET	AD	AUTOMATIC DAMPER
	COMBINATION TELEPHONE / DATA OUTLET.	AIC	AMPERE INTERRUPTING CAPACITY
	DATA OUTLET	AL	ALUMINUM
	TELEPHONE TERMINAL BOARD, 4x8x3/4" FIRE RATED PLYWOOD.	AMP	AMPERAGE
	SINGLE POLE, SINGLE-THROW SWITCH, 20 AMP, 120/277V.	ATS	AUTOMATIC TRANSFER SWITCH
	3-WAY SWITCH, 20 AMP, 120/277V.	AWG	AMERICAN WIRE GAUGE
	4-WAY SWITCH, 20 AMP, 120/277V.	BKR	BREAKER
	KEY SWITCH	C	CONDUIT
	DIMMER SWITCH. SEE DRAWINGS FOR SPECIFICATIONS.	CKT.	CIRCUIT
	WALL MOUNTED OCCUPANCY SENSOR AS SPECIFIED; 120/277VAC	CT	CURRENT TRANSFORMER
	CEILING MOUNTED OCCUPANCY SENSOR AS SPECIFIED; 120/277VAC	CU	COPPER
	EMERGENCY POWER OFF SWITCH (E.P.O.)	DC	DIRECT CURRENT
	PUSH BUTTON	DISC.	DISCONNECT
	BUZZER	EC	ELECTRICAL CONTRACTOR
	JUNCTION BOX MOUNTED ABOVE ACCESSIBLE CEILING.	EMT	ELECTRICAL METALLIC TUBING
	JUNCTION BOX - WALL MOUNTED	EPO	EMERGENCY POWER OFF
	DISCONNECT IN A NEMA 1 ENCLOSURE, UNLESS OTHERWISE SPECIFIED. REFER TO DRAWINGS FOR AMPERAGE, PHASES, & FUSE SIZE. (IF REQUIRED) 30 AMP, 3 POLE, NON-FUSED - U.O.N.	FA	FIRE ALARM
	SINGLE PHASE MOTOR	FACP	FIRE ALARM CONTROL PANEL
	MOTOR STARTER / DISCONNECT IN A NEMA 1 ENCLOSURE, UNLESS OTHERWISE SPECIFIED. REFER TO DRAWINGS FOR AMPERAGE, PHASES, FUSE SIZE (IF REQUIRED), AND SIZE. 30 AMP, 3 POLE, NON-FUSED, SIZE "0"-U.O.N.	FC	FOOT CANDLE
	MOTOR STARTER/VFD IN A NEMA 1 ENCLOSURE, UNLESS OTHERWISE SPECIFIED. REFER TO DRAWINGS FOR AMPERAGE, PHASES AND SIZE. CONTRACTOR IN A NEMA 1 ENCLOSURE, UNLESS OTHERWISE SPECIFIED. REFER TO DRAWINGS FOR AMPERAGE AND NUMBER OF POLES.	FLA	FULL LOAD AMPS
	PHOTO-ELECTRIC CELL	FLC	FULL LOAD CURRENT
	TIMECLOCK IN NEMA 1 ENCLOSURE, OTHERWISE SPECIFIED. REFER TO DRAWINGS FOR AMPERAGE AND NUMBER OF POLES.	GC	GENERAL CONTRACTOR
	CARD READER JUNCTION BOX WITH 3/4" C TO ACCESSIBLE CEILING U.O.N.	GFI	GROUND FAULT INTERRUPTER
	GROUND	GND.	GROUND
	FIRE ALARM SYMBOLS	HD	HEAVY DUTY
	SMOKE DETECTOR (IONIZATION)	HOA	HAND-OFF-AUTO
	HEAT DETECTOR	HP	HORSEPOWER
	DUCT DETECTOR WITH SAMPLING TUBE.	IS	ISOLATED GROUND
	TAMPER SWITCH	KCM	THOUSAND CIRCULAR MILS
	WATER FLOW SWITCH.	KW	KILOWATT
	MAGNETIC DOOR HOLD OPEN.	MC	METAL CLAD
	SMOKE FIRE DAMPER	MCB	MAIN CIRCUIT BREAKER
	SECURITY CAMERA	MH	METAL HALIDE
	FIREMAN'S PHONE JACK.	MSE	MAIN SWITCHBOARD
	FIREMAN'S TELEPHONE HANDSET.	MLO	MAIN LUG ONLY
	FIRE ALARM CONTROL PANEL.	NEC	NATIONAL ELECTRICAL CODE
	FIRE ALARM REMOTE ANNUNCIATOR.	NEMA	NATIONAL ELECTRICAL MANUFACTURERS ASSOCIATION
		NFPA	NATIONAL FIRE PROTECTION ASSOCIATION
		NIC	NOT IN CONTRACT
		NF	NON-FUSED
		NL	NIGHT LIGHT
		NTS	NOT TO SCALE
		PH	PHASE
		PNL	PANEL OR PANELBOARD
		PVC	POLYVINYL CHLORIDE
		RACP	REMOTE ANNUNCIATOR CONTROL PANEL
		RCP	REFLECTED CEILING PLAN
		RE	REFERENCE
		SFD	SMOKE/FIRE DAMPER
		SPEC.	SPECIFICATIONS
		SF	SQUARE FEET
		TS	TIME SWITCH
		TTB	TELEPHONE TERMINAL BOARD
		TYP	TYPICAL
		UG	UNDERGROUND
		U.O.N.	UNLESS NOTED OTHERWISE
		UPS	UNINTERRUPTIBLE POWER SUPPLY
		V	VOLTAGE
		VFD	VARIABLE FREQUENCY DRIVE
		WP	WEATHER PROOF
		WPIU	WEATHER PROOF IN USE COVER
		WR	WEATHER RESISTANT
		XFMR	TRANSFORMER

ELECTRICAL GENERAL NOTES	
A.	REFER TO ELECTRICAL PLANS FOR DEMOLITION, NEW WORK, AND ADDITIONAL INFORMATION FOR RELOCATED ITEMS.
B.	REFER TO ELECTRICAL SPECIFICATIONS, SCHEDULES, AND DETAIL DRAWINGS FOR ADDITIONAL INFORMATION.
D.	CONTRACTOR SHALL FIELD VERIFY ACTUAL LOCATIONS OF ALL DEVICES, PANELS, & CIRCUITING PRIOR TO SUBMITTING A BID. COORDINATE COMPLETELY WITH ALL OTHER TRADES.
E.	THE CONTRACTOR SHALL VERIFY THAT ALL EXISTING AND NEW ELECTRICAL DEVICES AND DISTRIBUTION EQUIPMENT ARE MOUNTED SO THAT ALL REQUIRED CODE AND MANUFACTURER'S SERVICES CLEARANCES ARE MAINTAINED. COORDINATE COMPLETELY WITH ALL NEW WALLS AND RELOCATE AS REQUIRED TO MAINTAIN PROPER CLEARANCES.
F.	DUE TO DRAWING SCALE, IT IS NOT POSSIBLE TO INDICATE ALL CONDUIT AND FITTINGS WHICH MAY BE REQUIRED. THE CONTRACTOR SHALL EXAMINE FIELD CONDITIONS AND FURNISH THE NECESSARY COMPONENTS WHICH MAY BE REQUIRED TO COMPLETE THE INSTALLATION.
G.	IT SHALL BE THE RESPONSIBILITY OF THE GENERAL CONTRACTOR TO BRING TO THE ATTENTION OF THE ELECTRICAL ENGINEER ANY SAFETY OR CODE CONCERNS WITH THE PROPOSED PLAN PRIOR TO ROUGH IN.
H.	ELECTRICAL CONTRACTOR SHALL VERIFY THAT LOCATION OF CEILING, FLOOR, AND WALL MOUNTED ELECTRICAL DEVICES OR DISTRIBUTION EQUIPMENT SHOWN ON THE DRAWINGS ARE ACCEPTABLE TO THE ARCHITECT PRIOR TO INSTALLATION.
I.	THE CONTRACTOR SHALL REPLACE ANY DAMAGED OR NON-FUNCTIONING LIGHT SWITCHES, RECEPTACLES, OR COVERS. NEW DEVICES AND COVERS SHALL MATCH BUILDING STANDARD.
J.	ALL EQUIPMENT LOCATED OUTSIDE OR EXPOSED TO UNCONDITIONED AIR SHALL BE INSTALLED OR PROVIDED WITH NEMA 3R RATED ENCLOSURES.
K.	NEW EXPANDED TO VIEW DISCONNECTS, CONDUIT, OR DISTRIBUTION EQUIPMENT SHALL BE PAINTED TO MATCH BUILDING EXTERIOR. REFER TO THE ARCHITECT FOR FINISH OF EQUIPMENT.

ELECTRICAL DRAWING LIST	
DRAWING #	DESCRIPTION
E0.000	ELECTRICAL - SYMBOLS, ABBREVIATIONS, SCHEDULES
E0.001	ELECTRICAL - SPECIFICATIONS
E1.000	ELECTRICAL - 1ST LEVEL LIGHTING & POWER PLANS
E2.000	ELECTRICAL - 1ST LEVEL LIGHTING & POWER PLANS
E3.000	ELECTRICAL - RISER DIAGRAM AND PANEL SCHEDULES
ES1.000	ELECTRICAL PHOTOMETRICS

OCCUPANCY SENSOR LEGEND	
DEVICE	NOTES
\$051 SENSORSWITCH #WSX-PDT-SA-*	SINGLE RELAY, LINE VOLTAGE, WALL MOUNTED. FACTORY SET TO "AUTO ON".
\$v51 SENSORSWITCH #WSX-PDT-SA-*	SINGLE RELAY, LINE VOLTAGE, WALL MOUNTED. FACTORY SET TO "MANUAL ON".
\$052 SENSORSWITCH #WSX-PDT-2P-2SA-*	DUAL RELAY, LINE VOLTAGE, WALL MOUNTED. BOTH RELAYS FACTORY SET TO "MANUAL ON".
\$055 SENSORSWITCH #WSX-PDT-LV-DX	HLIGHT ENABLED, WALL MOUNTED WITH ON/OFF AND RAISE/LOWER CONTROL.
\$ SENSORSWITCH #nPODM	HLIGHT ENABLED, DIGITAL SWITCH WITH "OFF/ON".
\$2 SENSORSWITCH #nPODM-2P	HLIGHT ENABLED, 2-ZONE, DIGITAL SWITCH WITH "OFF/ON".
\$4 SENSORSWITCH #nPODM-4P	HLIGHT ENABLED, 4-ZONE, DIGITAL SWITCH WITH "OFF/ON".
\$ SENSORSWITCH #nPODM-DX	HLIGHT ENABLED, DIGITAL ON/OFF WITH RAISE/LOWER CONTROL.
\$2 SENSORSWITCH #nPODM-2P-DX	HLIGHT ENABLED, 2-ZONE, DIGITAL ON/OFF WITH RAISE/LOWER CONTROL.
\$056 SENSORSWITCH #CM-PDT-6	HLIGHT ENABLED, SINGLE CIRCUIT, CEILING MOUNTED, HIGH MOUNT
\$057 SENSORSWITCH #CM-PDT-9	SINGLE CIRCUIT, CEILING MOUNTED, STANDARD ZONE.
\$058 SENSORSWITCH #nCM-PDT-9	HLIGHT ENABLED, SINGLE CIRCUIT, CEILING MOUNTED, STANDARD ZONE.
\$059 SENSORSWITCH #CM-PDT-10	SINGLE CIRCUIT, CEILING MOUNTED, EXTENDED ZONE.
\$060 SENSORSWITCH #nCM-PDT-10	HLIGHT ENABLED, SINGLE CIRCUIT, CEILING MOUNTED, EXTENDED ZONE.
\$061 SENSORSWITCH #nPP16-	HLIGHT ENABLED, AUTO ON, POWER PACK
\$062 SENSORSWITCH #nPP16-SA	HLIGHT ENABLED, MANUAL ON, POWER PACK
\$063 SENSORSWITCH #nPP16-D-SA	HLIGHT ENABLED, MANUAL ON, POWER PACK WITH 0-10V OUTPUT.
\$064 SENSORSWITCH #nPP16-D-ER	HLIGHT ENABLED, MANUAL ON, POWER PACK WITH 0-10V OUTPUT AND EMERGENCY OPERATION.
\$065 SENSORSWITCH #nPP16-ER	HLIGHT ENABLED, MANUAL ON, POWER PACK WITH EMERGENCY OPERATION.

NOTE:
 - DISABLE PHOTO SENSOR OPTION ON ALL OCCUPANCY SENSORS.
 - DISABLE "SELF-ADAPTIVE MODE" ON ALL OCCUPANCY SENSORS
 - SET "DELAYED OFF" SETTING TO 20 MINUTES.
 - SET WALL MOUNTED OCCUPANCY SENSORS TO "MANUAL ON"
 - SET POWER PACKS "PPD" AND "PPM" TO "MANUAL ON"
 - FOR ALL HLIGHT ENABLED DEVICES, ROUTE CAT-5E CABLE AS REQUIRED BETWEEN DEVICES. REFERENCE SENSORSWITCH SHOP DRAWINGS FOR WIRING REQUIREMENTS
 - LIGHT SWITCHES/DIMMERS ASSOCIATED WITH POWER PACK "PPA" SHALL CONNECTED TO THE LOAD SIDE OF THE POWER PACK
 - FOR MULTI-SWITCH HLIGHT DEVICES ON COMMON ZONE, SWITCH LEG DESIGNATION INDICATES CORRESPONDING CHANNEL FOR POWER PACK. FOR EXAMPLE, SWITCH LEG "a" SHALL BE ASSIGNED TO CHANNEL #1 - SWITCH LEG "b" TO CHANNEL #2, ETC.
 - WHERE MULTIPLE OCCUPANCY SENSORS ARE INDICATED WITH "LIKE" SWITCH LEG, CONNECT ALL OCCUPANCY SENSORS IN PARALLEL SO THAT ANY OF THE OCCUPANCY SENSORS WILL ACTIVATE THE "OCCUPIED" MODE FOR THAT AREA.

LIGHTING FIXTURE SCHEDULE

ID	MANUFACTURER	CATALOG NUMBER	DESCRIPTION	MOUNTING	LAMPS				VOLTS	REMARKS
					NO.	WATTS	TOTAL WATTAGE	TYPE		
A	METALUX	4VT2-LD5-4-DR-W-UNV-1.840-CD1WL-MSWL20-U	4-FOOT VAPORTIGHT	SURFACE	1	29.9	30	LED	120	INTEGRAL WET LISTED MOTION SENSOR
AE	METALUX	4VT2-LD5-4-DR-W-UNV-1.840-CD1WL-120-EL10W-MSWL20	4-FOOT VAPORTIGHT, W/ BATT. BACK-UP	SURFACE	1	29.9	30	LED	120	INTEGRAL WET LISTED MOTION SENSOR
B	METALUX	22FP3235C	2X2	RECESSED / LAY-IN	1	29.4	29.4	LED	120	
BE	METALUX	22FP3235C-EL10W	2X2, W/ BATT. BACK-UP	RECESSED / LAY-IN/ SUSPENDED	1	29.4	29.4	LED	120	FIXTURE TO BE SUSPENDED AT THE 2ND LEVEL ELEVATOR LOBBY.
C	TECH LIGHTING	700-BCELI24-FINISH-LED930	2-FOOT VANITY	SURFACE/WALL	1	23.5	23.5	LED	120	
JE	METALUX	2VT3-LED5-3-G-120-L840-CD1-U	2-FOOT VAPORTIGHT, W/ BATT. BACK-UP	SURFACE	1	23.92	23.92	LED	120	
K	WAC LIGHTING	FM-07SQ-930-FINISH	7IN DOWNLIGHT	SURFACE	1	15.2	15.2	LED	120	
KE	WAC LIGHTING	FM-07SQ-930-FINISH	7IN DOWNLIGHT, W/BATT. BACK-UP	SURFACE	1	15.2	15.2	LED	120	PROVIDE REMOTE 10W BATTERY BACK UP.
L	SUNLITE	97065-SU	WALL PACK	WALL	1	59.8	59.8	LED	120	
M	LIGHTWAY	NEFW-460-LED-05C-4-B1-B1-DIM	EXTERIOR WALL	WALL	1	45	45	LED	120	COORDINATE EXACT MOUNTING WITH THE ARCHITECT.
N	INTENSE LIGHTING	MXG2PSDREM20L03050 FINISH MOUNT REMMXG2PLOEM7	PENDANT	SUSPENDED	1	10	10	LED	120	COORDINATE EXACT MOUNTING WITH THE ARCHITECT.
O	INTENSE LIGHTING	MXG2PSU2L030DIM5050 FINISH CRWB	WALL SCONCE	WALL	1	10	10	LED	120	
P1E	NEO-RAY	S122DIW-C675D710U830-4F0-1E-UDD-A1-FINISH-B3	4-FOOT LINEAR LED, W/ BATT. BACK-UP	SURFACE	1	45	45	LED	120	
P2E	NEO-RAY	S122DIW-C675D710U830-2F0-1E-UDD-A1-FINISH-B3	2-FOOT LINEAR LED, W/ BATT. BACK-UP	SURFACE	1	23	23	LED	120	
X1	SURE-LITES	APXH7-R-2	EXIT SIGN, W/EGRESS HEADS	SURFACE	1	3.7	3.7	LED	120	VERIFY EXACT MOUNTING WITH THE MANUFACTURER RECOMMENDATIONS TO ACHIEVE THE REQUIRED EGRESS ILLUMINATION LEVELS.

LIGHT FIXTURE SCHEDULE NOTES

- CONTRACTOR SHALL VERIFY CEILING TYPES AND COORDINATE ADDITIONAL LIGHT FIXTURE MOUNTING REQUIREMENTS WITH MANUFACTURER PRIOR TO PURCHASE, AND/OR RELOCATION.
- FIELD VERIFY CLEARANCE ABOVE FIXTURE PRIOR TO INSTALLATION.
- VERIFY APPEARANCE AND FINISH OF ALL LIGHT FIXTURES WITH ARCHITECT PRIOR TO PURCHASE.
- PROVIDE HOUSING TO MATCH FIXTURE SELECTED.
- COORDINATE FINAL MOUNTING HEIGHT WITH ARCHITECT PRIOR TO PURCHASE.



12/12/2022

REVISIONS

DATE	DESCRIPTION
1 2022-12-9	REVISION 1

PROJ. NO.	ORIG. ISSUE
	2022.09.30

CURRENT:
2022.12.09

6707 RIVERSIDE LOAD SUMMARY

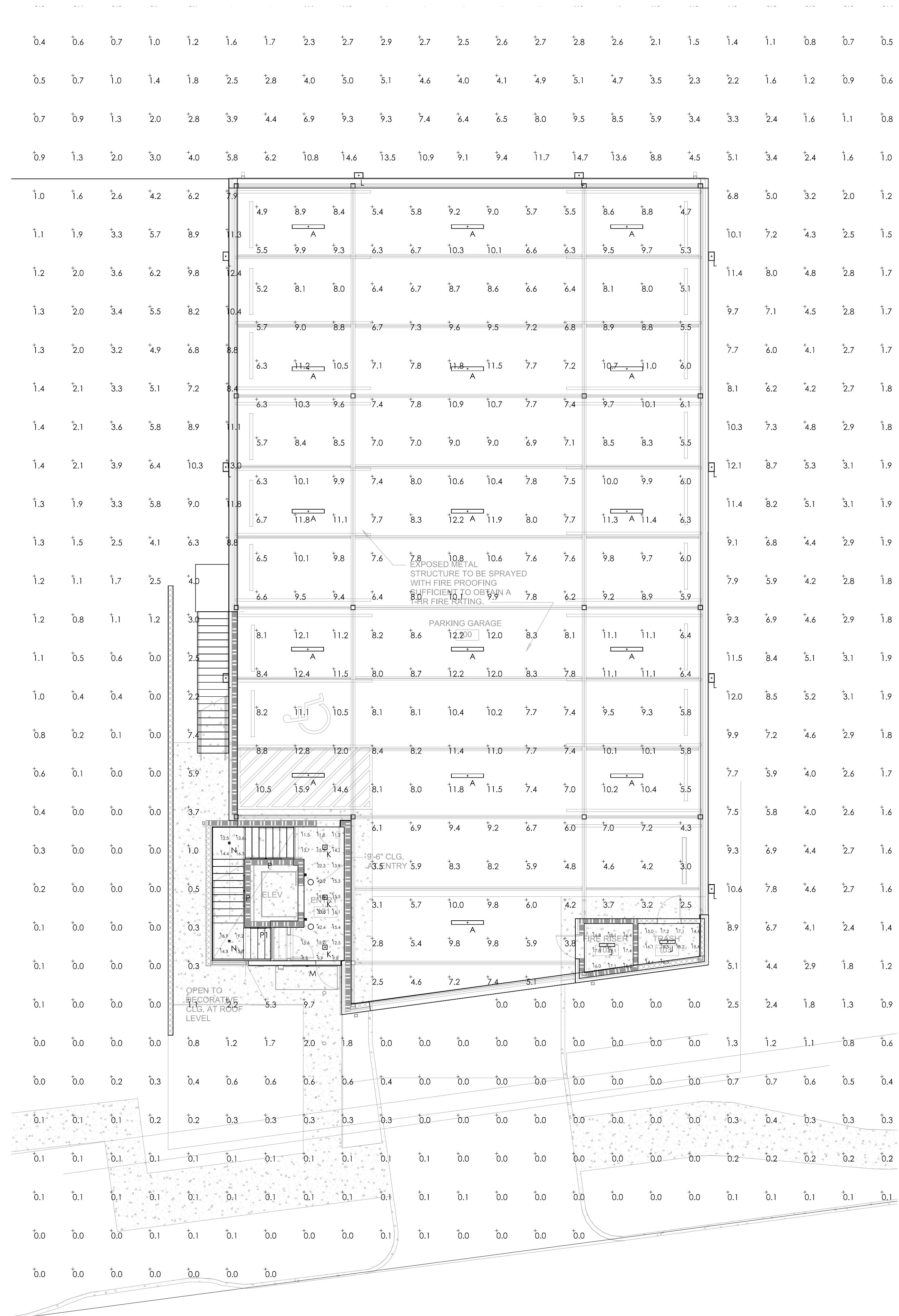
LOAD	KW / KVA	PHASE	VOLTAGE	AMPS
SUITE 202 (3,388sf @20VA/sf)	67.76	3	208	188.1
SUITE 201 (2,070sf @20VA/sf)	41.4	3	208	114.9
PANEL "L1" (FROM PANEL SCHEDULE)	13.2	3	208	36.6
PANEL "L2" (FROM PANEL SCHEDULE)	19.8	3	208	55.0
PANEL "HP" (FROM PANEL SCHEDULE)	61.7	3	208	171.3
TOTAL LOAD	203.86	3	208	565.9

PROPOSED SERVICE IS 208V/3 PHASE, AND AMPS = **800**
 PROPOSED SERVICE CAPACITY REMAINING (800 - 565.9) / 800 = **29.3%**
 THEREFORE, A 800 AMP, 208V, 3PH, 4W SERVICE IS RECOMMENDED.

PANEL: HP

MAINS: 225 A, MLO
 VOLTAGE: 120/208 V, 3 PH, 4 W
 BUSSING: 225 A, W/ FTL & EQUIPT. GROUND
 ENCLOSURE: SURFACE/NEMA 1 AIC RATING: 14K RMS SYM, FULLY RATED

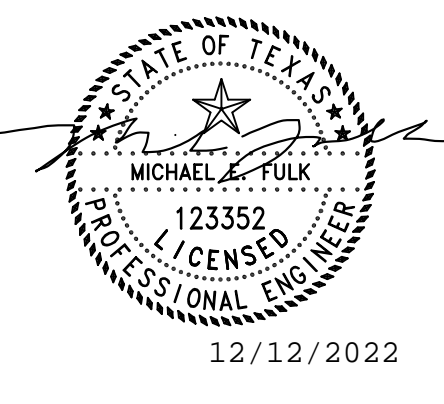
DESCRIPTION	BKR SIZE	PHASE LOAD (VA)			CIRC. NO.	CIRC. NO.	PHASE LOAD (VA)			BKR SIZE	DESCRIPTION
		A	B	C			A	B	C		
ELEVATOR	100/3	7,200	7,200		1	2	188			20/1	1ST LEVEL LIGHTING
I					3	4	338			20/1	2ND LEVEL LIGHTING
I					5	6		525		20/1	GARAGE LIGHTING
ELEV. PIT RECEPT./LTG.	20/1	210			7	8	583			20/1	EXTERIOR LIGHTING
ELEV. CAB VENT/LTG.	20/1	650			9	10	500			20/1	SIGNAGE
SUMP PUMP	20/1		1,680		11	12				20/1	SPARE
EWHP	20/1	1,500			13	14	350			20/1	LIGHTING CONTROL
HWRCF	20/1		696		15	16	500			20/1	IT RECEPT
FIRE/SMOKE DAMPERS	20/1		150		17	18				20/1	SPARE
FIRE SPRINKLER PANEL	20/1	350			19	20	5,440			60/3	AHU-1
SPARE	20/1				21	22	5,440				I
EUH-1	25/2		1,650		23	24		5,440			I
I					25	26	2,160			30/3	CU-1
ECUH-1	20/2	1,650	1,500		27	28	2,160				I
I					29	30		2,160			I
GEF-1	30/1	1,920			31	32	720			20/1	EXTERIOR RECEPTS
SPARE	20/1		0		33	34		180		20/1	1ST LEVEL RECEPT
SPARE			0		35	36		1,260		20/1	2ND LEVEL RECEPTS
SPARE			0		37	38	750			20/1	EDF
SPARE			0		39	40		0		20/1	SPARE
SPARE			0		41	42		0		20/1	SPARE
SPARE			0		43	44		0		20/1	SPARE
SPARE			0		45	46		0		20/1	SPARE
SPARE			0		47	48		0		20/1	SPARE
SPARE			0		49	50		0		20/1	SPARE
SPARE			0		51	52		0		20/1	SPARE
SPARE			0		53	54		0		20/1	SPARE
SPARE			0		55	56		0		20/1	SPARE
SPARE			0		57	58		0		20/1	SPARE
SPARE			0		59	60		0		20/1	SPARE
SPARE			0		61	62		0		20/1	SPARE
SPARE			0		63	64		0		20/1	SPARE
SPARE			0		65	66		0		20/1	SPARE
SPARE			0		67	68		0		20/1	SPARE
SPARE			0		69	70		0		20/1	SPARE
SPARE			0		71	72		0		20/1	SPARE
SPARE			0		73	74		0		20/1	SPARE
SPARE			0		75	76		0		20/1	SPARE
SPARE			0		77	78		0		20/1	SPARE
SPARE			0		79	80		0		20/1	SPARE
SPARE			0		81	82		0		20/1	SPARE
SPARE			0		83	84		0		20/1	SPARE
SPARE			0		85	86		0		20/1	SPARE
SPARE			0		87	88		0		20/1	SPARE
SPARE			0		89	90		0		20/1	SPARE
SPARE			0		91	92		0		20/1	SPARE
SPARE			0		93	94		0		20/1	SPARE
SPARE			0		95	96		0		20/1	SPARE
SPARE			0		97	98		0		20/1	SPARE
SPARE			0		99	100		0		20/1	SPARE
SPARE			0		101	102		0		20/1	SPARE
SPARE			0		103	104		0		20/1	SPARE
SPARE			0		105	106		0		20/1	SPARE
SPARE			0		107	108		0		20/1	SPARE
SPARE			0		109	110		0		20/1	SPARE
SPARE			0		111	112		0		20/1	SPARE
SPARE			0		113	114		0		20/1	SPARE
SPARE			0		115	116		0		20/1	SPARE
SPARE			0		117	118		0		20/1	SPARE
SPARE			0		119	120		0		20/1	SPARE
SPARE			0		121	122		0		20/1	SPARE
SPARE			0		123	124		0		20/1	SPARE
SPARE			0		125	126		0		20/1	SPARE
SPARE			0		127	128		0		20/1	SPARE
SPARE			0		129	130		0		20/1	SPARE
SPARE			0		131	132		0		20/1	SPARE
SPARE			0		133	134		0		20/1	SPARE
SPARE			0		135	136		0		20/1	SPARE
SPARE			0		137	138		0		20/1	SPARE
SPARE			0		139	140		0		20/1	SPARE
SPARE			0		141	142		0		20/1	SPARE
SPARE			0		143	144		0		20/1	SPARE
SPARE			0		145	146		0		20/1	SPARE
SPARE			0		147	148		0		20/1	SPARE
SPARE			0		149	150		0		20/1	SPARE
SPARE			0		151	152		0		20/1	SPARE
SPARE			0		153	154		0		20/1	SPARE
SPARE			0		155	156		0		20/1	SPARE
SPARE			0		157	158		0		20/1	SPARE
SPARE			0		159	160		0		20/1	SPARE
SPARE			0		161	162		0		20/1	SPARE
SPARE			0		163	164		0		20/1	SPARE
SPARE			0		165	166		0		20/1	SPARE
SPARE			0		167	168		0		20/1	SPARE
SPARE			0		169	170		0		20/1	SPARE
SPARE			0		171	172		0		20/1	SPARE
SPARE			0		173	174		0		20/1	SPARE
SPARE			0		175	176		0		20/1	SPARE
SPARE			0		177	178		0		20/1	SPARE
SPARE			0		179	180		0		20/1	SPARE
SPARE			0		181	182		0		20/1	SPARE
SPARE			0		183	184		0		20/1	SPARE
SPARE			0		185	186		0		20/1	SPARE
SPARE			0		187	188		0		20/1	SPARE
SPARE			0		189	190		0		20/1	SPARE
SPARE			0		191	192		0		20/1	SPARE
SPARE			0		193	194		0		20/1	SPARE
SPARE			0		195	196		0		20/1	SPARE
SPARE			0		197	198		0		20/1	SPARE
SPARE			0		199	200		0		20/1	SPARE
SPARE			0		201	202		0		20/1	SPARE
SPARE			0		203	204		0		20/1	SPARE
SPARE			0		205	206		0		20/1	SPARE
SPARE			0		207	208		0		20/1	SPARE
SPARE			0		209	210		0		20/1	SPARE
SPARE			0		211	212		0		20/1	SPARE
SPARE			0		213	214		0		20/1	SPARE
SPARE			0		215	216		0		20/1	SPARE
SPARE			0		217	218		0		20/1	SPARE
SPARE			0		219	220		0		20/1	SPARE
SPARE			0		221	222		0		20/1	SPARE
SPARE			0		223	224		0		20/1	SPARE
SPARE			0		225	226		0		20/1	SPARE
SPARE			0		227	228		0		20/1	SPARE
SPARE			0		229	230		0		20/1	SPARE
SPARE			0		231	232		0		20/1	SPARE
SPARE			0		233	234		0		20/1	SPARE
SPARE			0		235	236		0		20/1	SPARE
SPARE			0		237	238		0		20/1	SPARE
SPARE			0		239	240		0		20/1	SPARE
SPARE			0		241	242		0		20/1	SPARE
SPARE			0		243	244		0		20/1	SPARE
SPARE			0		245	246		0		20/1	SPARE
SPARE			0		247	248		0		20/1	SPARE
SPARE			0		249	250		0		20/1	SPARE
SPARE			0		251	252		0		20/1	SPARE
SPARE			0		253	254		0		20/1	SPARE
SPARE			0		255	256		0		20/1	SPARE
SPARE			0		257	258		0		20/1	SPARE
SPARE			0		259	260		0		20/1	SPARE
SPARE			0		261	262		0		20/1	SPARE
SPARE			0		263	264		0		20/1	SPARE
SPARE			0		265	266		0		20/1	SPARE
SPARE			0		267	268		0		20/1	SPARE
SPARE			0		269	270		0		20/1	SPARE
SPARE			0		271	272		0		20/1	SPARE
SPARE			0		273	274		0		20/1	SPARE
SPARE			0		275	276		0		20/1	SPARE
SPARE			0		277	278		0		20/1	SPARE
SPARE			0		279	280		0		20/1	SPARE
SPARE			0		281	282		0		20/1	SPARE
SPARE			0		283	284		0		20/1	SPARE
SPARE			0		285	286		0		20/1	SPARE
SPARE			0		287	288		0		20/1	SPARE
SPARE			0		289	290		0		20/1	SPARE
SPARE			0		291	292		0		20/1	SPARE
SPARE			0		293	294		0		20/1	SPARE
SPARE			0		295	296		0		20/1	SPARE
SPARE			0		297	298					



Fixture ID	Type	Manufacturer	Catalog Number	Mounting	Comp	Lum. Waits	Controls	Description	Notes
1	A	METALUX	4972-L25-4-GR-W-GRV-LED-CDI-WL-U	SURFACE	LED-4K	29.9		#1 TAMPA RESEALANT VAPORITE	
2	B	METALUX	2895-33C	RECESSED	LED-3K	29.4		2X2 TROFFER PANEL	
3	C	TECH LIGHTING	208RCELEDWH-LED-3P0	WALL	LED-3K	23.5		ELITE 20W BATH BAR	
4	D	METALUX	2755-L25-3-GRV-LED-CDI-U	CEILING	LED-4K	23.99		3P VAPORITE	
5	E	WAC Lighting	FW2092-3P-3P-SR	CEILING	LED-3K	13.21V		3W SQUARE CEILING MOUNT	
6	F	GENIE	FW565	WALL	LED-3K	39.8		OUTDOOR WALL MOUNT HUBBLOT WALL PACK SUPER WHITE	
7	G	GENIE	FW565	WALL	LED-3K	39.8		40W WET-LEDE EXTERIOR WALL SCIENCE	
8	H	GENIE	FW565	WALL	LED-3K	39.8		40W WET-LEDE EXTERIOR WALL SCIENCE	
9	I	GENIE	FW565	WALL	LED-3K	39.8		40W WET-LEDE EXTERIOR WALL SCIENCE	
10	J	GENIE	FW565	WALL	LED-3K	39.8		40W WET-LEDE EXTERIOR WALL SCIENCE	
11	K	GENIE	FW565	WALL	LED-3K	39.8		40W WET-LEDE EXTERIOR WALL SCIENCE	
12	L	GENIE	FW565	WALL	LED-3K	39.8		40W WET-LEDE EXTERIOR WALL SCIENCE	
13	M	GENIE	FW565	WALL	LED-3K	39.8		40W WET-LEDE EXTERIOR WALL SCIENCE	
14	N	GENIE	FW565	WALL	LED-3K	39.8		40W WET-LEDE EXTERIOR WALL SCIENCE	
15	O	GENIE	FW565	WALL	LED-3K	39.8		40W WET-LEDE EXTERIOR WALL SCIENCE	
16	P	GENIE	FW565	WALL	LED-3K	39.8		40W WET-LEDE EXTERIOR WALL SCIENCE	
17	Q	GENIE	FW565	WALL	LED-3K	39.8		40W WET-LEDE EXTERIOR WALL SCIENCE	
18	R	GENIE	FW565	WALL	LED-3K	39.8		40W WET-LEDE EXTERIOR WALL SCIENCE	
19	S	GENIE	FW565	WALL	LED-3K	39.8		40W WET-LEDE EXTERIOR WALL SCIENCE	
20	T	GENIE	FW565	WALL	LED-3K	39.8		40W WET-LEDE EXTERIOR WALL SCIENCE	
21	U	GENIE	FW565	WALL	LED-3K	39.8		40W WET-LEDE EXTERIOR WALL SCIENCE	
22	V	GENIE	FW565	WALL	LED-3K	39.8		40W WET-LEDE EXTERIOR WALL SCIENCE	
23	W	GENIE	FW565	WALL	LED-3K	39.8		40W WET-LEDE EXTERIOR WALL SCIENCE	
24	X	GENIE	FW565	WALL	LED-3K	39.8		40W WET-LEDE EXTERIOR WALL SCIENCE	
25	Y	GENIE	FW565	WALL	LED-3K	39.8		40W WET-LEDE EXTERIOR WALL SCIENCE	
26	Z	GENIE	FW565	WALL	LED-3K	39.8		40W WET-LEDE EXTERIOR WALL SCIENCE	

1 ELECTRICAL - PHOTOMETRICS
SCALE: 1/8" = 1'-0"

ISSUE FOR PERMIT



6707 Riverside
6707 Riverside Drive
Austin, TX 78741

REVISIONS

Δ	DATE	DESCRIPTION
1	2022-12-9	REVISION 1

PROJ. NO. | ORIG. ISSUE
2022.09.30

CURRENT:
2022.12.09

SHEET NAME:
ELECTRICAL - PHOTOMETRICS

SHEET NO:
ES1.000