

★ LOCATION MAP ★

TEXAS COMMISSION ON ENVIRONMENTAL QUALITY
CONTRIBUTING ZONE PLAN
GENERAL CONSTRUCTION NOTES

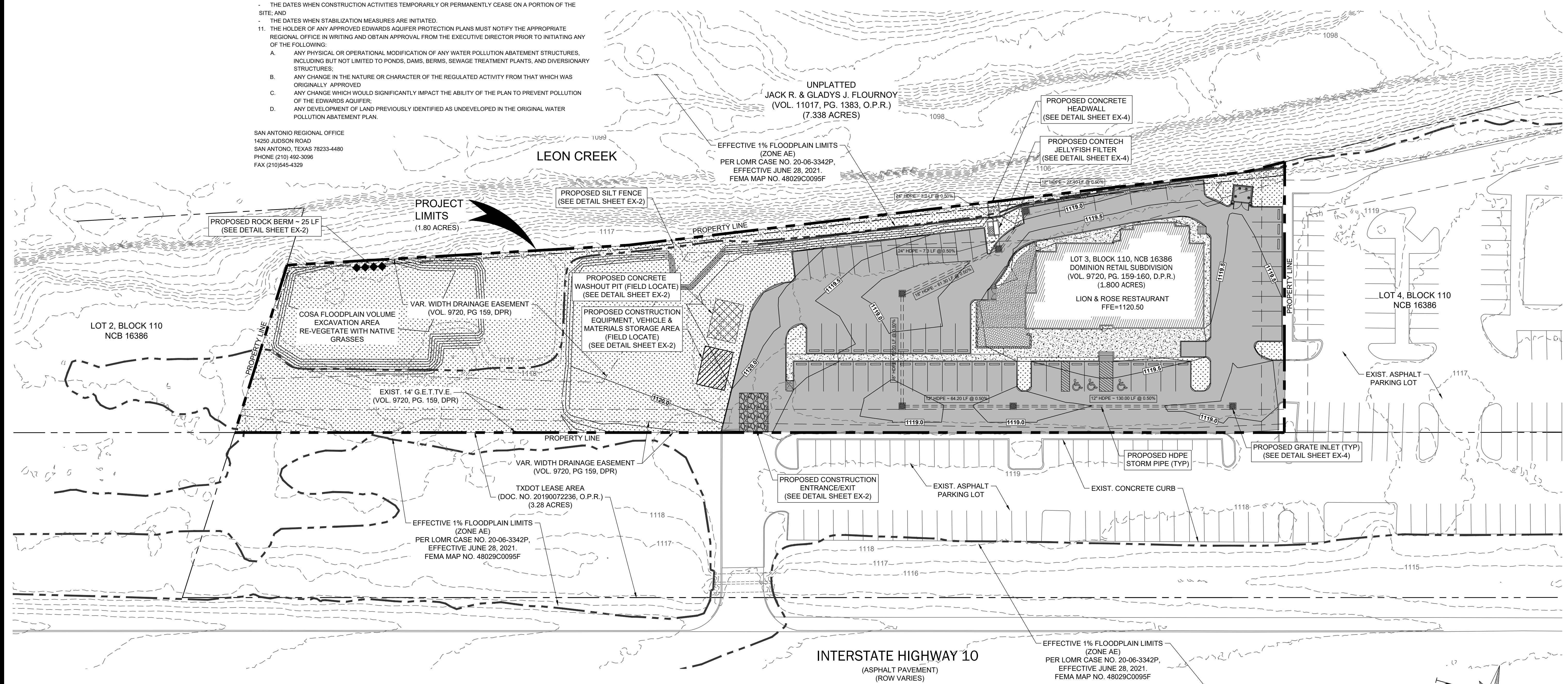
- A WRITTEN NOTICE OF CONSTRUCTION MUST BE SUBMITTED TO THE TCEQ REGIONAL OFFICE AT LEAST 48 HOURS PRIOR TO THE START OF ANY REGULATED ACTIVITIES. THIS NOTICE MUST INCLUDE:
 - THE NAME OF APPROVED PROJECT
 - THE ACTIVITY START DATE; AND
 - THE CONTACT INFORMATION OF THE PRIME CONTRACTOR.
- ALL CONTRACTORS CONDUCTING REGULATED ACTIVITIES ASSOCIATED WITH THIS PROJECT SHOULD BE PROVIDED WITH COMPLETE COPIES OF THE APPROVED CONTRIBUTING ZONE PLAN (CZP) AND THE TCEQ LETTER INDICATING THE SPECIFIC CONDITIONS OF ITS APPROVAL. DURING THE COURSE OF THESE REGULATED ACTIVITIES, THE CONTRACTOR(S) SHOULD KEEP COPIES OF THE APPROVED PLAN AND APPROVAL LETTER ON-SITE.
- NO HAZARDOUS SUBSTANCE STORAGE TANK SHALL BE INSTALLED WITHIN 150 FEET OF A WATER SUPPLY SOURCE, DISTRIBUTION SYSTEM, WELL, OR SENSITIVE FEATURE.
- PRIOR TO BEGINNING ANY CONSTRUCTION ACTIVITY, ALL TEMPORARY EROSION AND SEDIMENTATION (E&S) CONTROL MEASURES MUST BE PROPERLY INSTALLED AND MAINTAINED IN ACCORDANCE WITH THE MANUFACTURER'S SPECIFICATIONS. IF INSPECTIONS INDICATE A CONTROL HAS BEEN USED INAPPROPRIATELY, OR INCORRECTLY, THE APPLICANT MUST REPLACE OR MODIFY THE CONTROL FOR SITE SITUATIONS. THESE CONTROLS MUST REMAIN IN PLACE UNTIL THE DISTURBED AREAS HAVE BEEN PERMANENTLY STABILIZED.
- ANY SEDIMENT THAT ESCAPES THE CONSTRUCTION SITE MUST BE COLLECTED AND PROPERLY DISPOSED OF BEFORE THE NEXT RAIN EVENT TO ENSURE IT IS NOT WASHED INTO SURFACE STREAMS, SENSITIVE FEATURES, ETC.
- SEDIMENT MUST BE REMOVED FROM THE SEDIMENT TRAPS OR SEDIMENTATION BASINS NOT LATER THAN WHEN IT OCCUPIES 50% OF THE BASIN'S DESIGN CAPACITY.
- LITTER, CONSTRUCTION DEBRIS, AND CONSTRUCTION CHEMICALS EXPOSED TO STORMWATER SHALL BE PREVENTED FROM BEING DISCHARGED OFFSITE.
- ALL EXCAVATED MATERIAL THAT WILL BE STORED ON-SITE MUST HAVE PROPER E&S CONTROLS.
- IF PORTIONS OF THE SITE WILL HAVE A TEMPORARY OR PERMANENT CEASE IN CONSTRUCTION ACTIVITY LASTING LONGER THAN 14 DAYS, SOIL STABILIZATION IN THOSE AREAS SHALL BE INITIATED AS SOON AS POSSIBLE PRIOR TO THE 14TH DAY OF INACTIVITY. IF ACTIVITY WILL RESUME PRIOR TO THE 21ST DAY STABILIZATION MEASURES ARE NOT REQUIRED. IF DROUGHT CONDITIONS OR INCLEMENT WEATHER PREVENT ACTION BY THE 14TH DAY, STABILIZATION MEASURES SHALL BE INITIATED AS SOON AS POSSIBLE.
- THE FOLLOWING RECORDS SHALL BE MAINTAINED AND MADE AVAILABLE TO THE TCEQ UPON REQUEST:
 - THE DATES WHEN MAJOR GRADING ACTIVITIES OCCUR;
 - THE DATES WHEN CONSTRUCTION ACTIVITIES TEMPORARILY OR PERMANENTLY CEASE ON A PORTION OF THE SITE; AND
 - THE DATES WHEN STABILIZATION MEASURES ARE INITIATED.
- THE HOLDER OF ANY APPROVED EDWARDS AQUIFER PROTECTION PLANS MUST NOTIFY THE APPROPRIATE REGIONAL OFFICE IN WRITING AND OBTAIN APPROVAL FROM THE EXECUTIVE DIRECTOR PRIOR TO INITIATING ANY OF THE FOLLOWING:
 - ANY PHYSICAL OR OPERATIONAL MODIFICATION OF ANY WATER POLLUTION ABATEMENT STRUCTURES, INCLUDING BUT NOT LIMITED TO PONDS, DAMS, BERMS, SEWAGE TREATMENT PLANTS, AND DIVERSIONARY STRUCTURES;
 - ANY CHANGE IN THE NATURE OR CHARACTER OF THE REGULATED ACTIVITY FROM THAT WHICH WAS ORIGINALLY APPROVED
 - ANY CHANGE WHICH WOULD SIGNIFICANTLY IMPACT THE ABILITY OF THE PLAN TO PREVENT POLLUTION OF THE EDWARDS AQUIFER;
 - ANY DEVELOPMENT OF LAND PREVIOUSLY IDENTIFIED AS UNDEVELOPED IN THE ORIGINAL WATER POLLUTION ABATEMENT PLAN.

SAN ANTONIO REGIONAL OFFICE
14250 JUDSON ROAD
SAN ANTONIO, TEXAS 78233-4480
PHONE (210) 492-3096
FAX (210) 545-4329

PROPOSED IMPERVIOUS COVER	
TOTAL SITE ACREAGE:	1.800 AC / 78,400 SF
PROPOSED IMPERVIOUS COVER:	0.960 AC / 41,800 SF
IMPERVIOUS COVER %:	53.3%

LEGEND

PROPERTY LINE	---
EXISTING FENCE	—○—○—
100-YR EFFECTIVE FLOODPLAIN	---
PROPOSED CONCRETE WALK (IMPERVIOUS AREAS)	▨
PROPOSED LANDSCAPE AREAS (PERVIOUS AREAS)	▨
PROPOSED ASPHALT PAVEMENT (IMPERVIOUS AREAS)	▨
CONCRETE WASHOUT PIT	▨
CONSTRUCTION ENTRANCE	▨
CONSTRUCTION EQUIPMENT, VEHICLE & MATERIALS STORAGE AREA	▨
SILT FENCE	—
PROPOSED CONTOUR	—1120.00—
EXISTING CONTOUR	—1120—
PROPOSED GRATE INLET	▨
PROPOSED ROCK BERM	◆◆◆



REVISIONS:

RAMONES ENGINEERING
1501 W. WINDSOR AVE | SAN ANTONIO, TX 78221 | 214.682.8900 | 1100 RILES F-1700E

TCEQ CZP SITE PLAN for

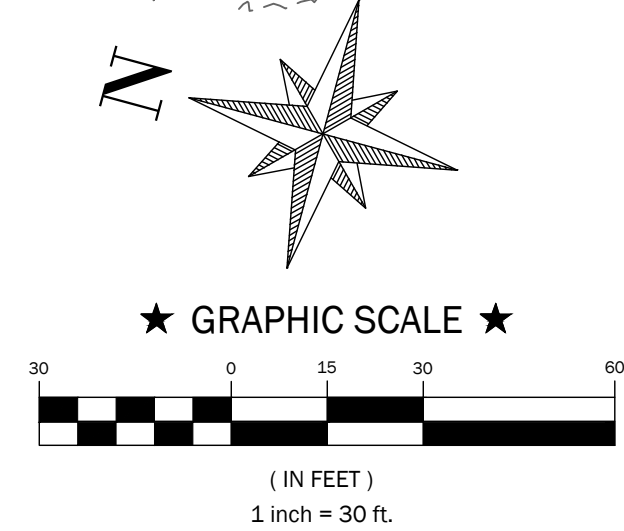
LION & ROSE RESTAURANT AT DOMINION CREEK
23330 IH-10 W, SAN ANTONIO, TX 78257

JOB #: C-2213
DATE: 1/28/2023
DESIGN: N.M.R.
DRAWN: N.M.R.
CHECKED:
SHEET: EX-1

THE ENGINEERING SEAL HAS BEEN AFFIXED TO THIS SHEET ONLY FOR THE PURPOSE OF DEMONSTRATING COMPLIANCE WITH THE POLLUTION ABATEMENT SIZING AND TREATMENT REQUIREMENTS OF THE TEXAS COMMISSION ON ENVIRONMENTAL QUALITY'S EDWARDS AQUIFER TECHNICAL GUIDANCE MANUAL.

THIS SHEET HAS BEEN PREPARED FOR PURPOSES OF POLLUTION ABATEMENT ONLY. ALL OTHER CIVIL ENGINEERING RELATED INFORMATION SHOULD BE ACQUIRED FROM THE APPROPRIATE SHEET IN THE CIVIL IMPROVEMENT PLANS.

EXHIBIT 1



THIS DOCUMENT HAS BEEN PRODUCED FROM MATERIAL THAT WAS STORED AND/OR TRANSMITTED ELECTRONICALLY AND MAY HAVE BEEN INAPPROPRIATELY ALTERED. RELY ONLY ON FINAL HARD COPY MATERIALS BEARING THE CONSULTANT'S ORIGINAL SIGNATURE AND SEAL.