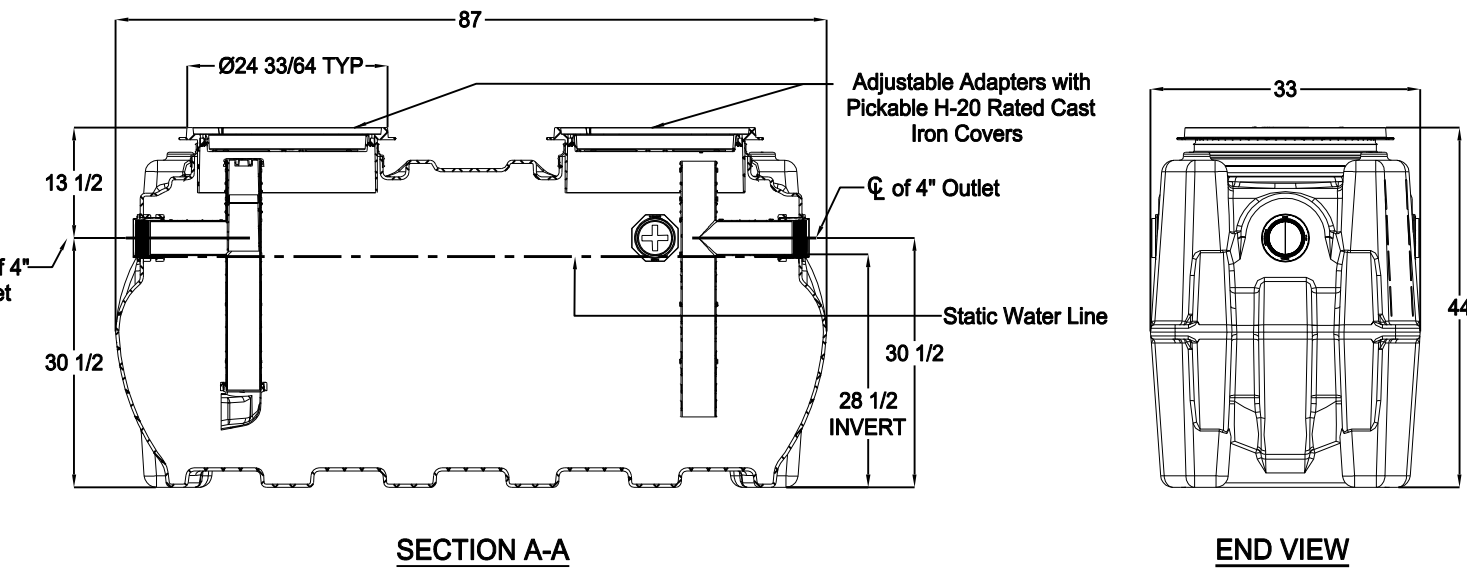
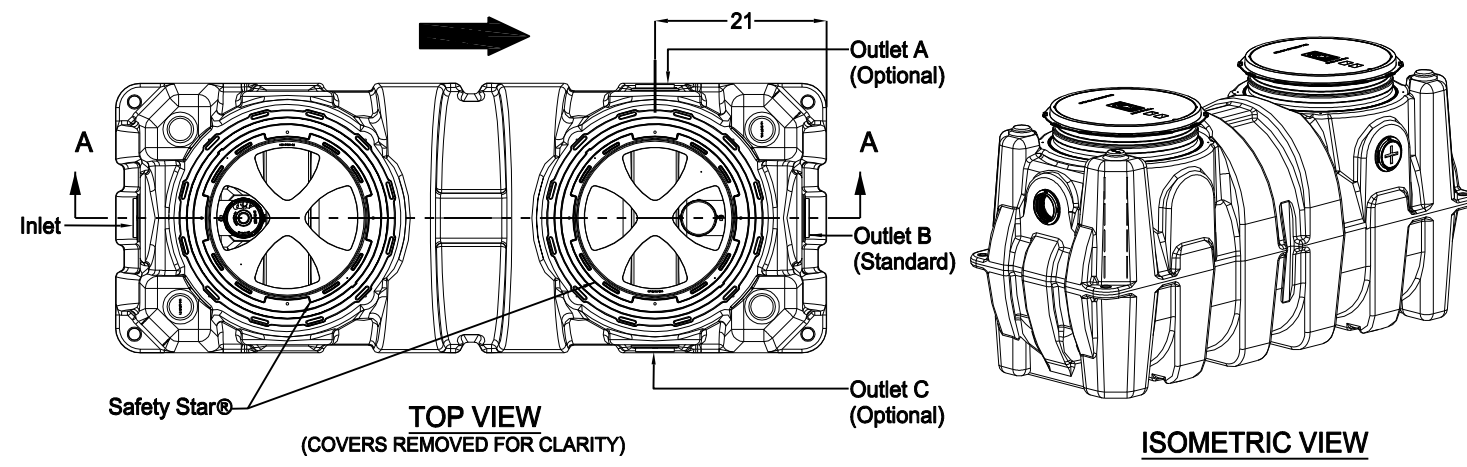


- SPECIFICATIONS**
- Notes:
- 4" FPT inlet/outlet with 4" plain end adapters, single inlet and triple outlet.
 - Unit weight - w/ cast iron covers: 376 lbs. (For wet weight add 2,310 lbs.)
 - Maximum operating temperature: 150° F continuous
 - Capacities - Liquid: 277 gal.; Grease: 1,895 lbs. (260 gal.) @ 100GPM; Grease: 1,196 lbs. (164 gal.) @ 200GPM; Solids: 69 gal.
 - This unit does not require flow control for 100 GPM applications. Built-in flow control is provided for 200 GPM applications. For series installations, only install flow control on the first unit in the series if necessary.
 - For gravity drainage applications only.
 - Do not use for pressure applications.
 - Cover placement allows full access to tank for proper maintenance.
 - Vent not required unless per local code.
 - Engineered inlet and outlet diffusers with inspection ports are removable to inspect / clean piping.
 - Integral air relief / Anti-siphon / Sampling access.
 - Adjustable cover adapters provide up to 4" of additional height.
 - Designed for below-grade, above-grade, indoor or outdoor installations.
 - Safety Star® access restrictor built into each cover adapter, prevents accidental entry to tanks (450 lb rating).



ENGINEER SPECIFICATION GUIDE

Schier Great Basin™ grease interceptor model # GB-250 shall be lifetime guaranteed and made in USA of seamless, rotationally-molded polyethylene with minimum 3/8" uniform wall thickness. Interceptor shall be furnished for above or below-grade installation with adjustable cover adapters. Safety Star® access restrictor built into each cover adapter, built-in flow control (for 200 GPM only) and three outlet options. Interceptor shall be certified to ASME A112.14.3 (Type D for 100 GPM, type C for 200 GPM) and CSA B481.1. Interceptor flow rate shall be 100 GPM or 200 GPM. Interceptor grease capacity shall be 1,895 lbs. @ 100 GPM or 1,196 lbs. @ 200 GPM. Cover shall provide water/gas-tight seal and have minimum 16,000 lbs. load capacity.

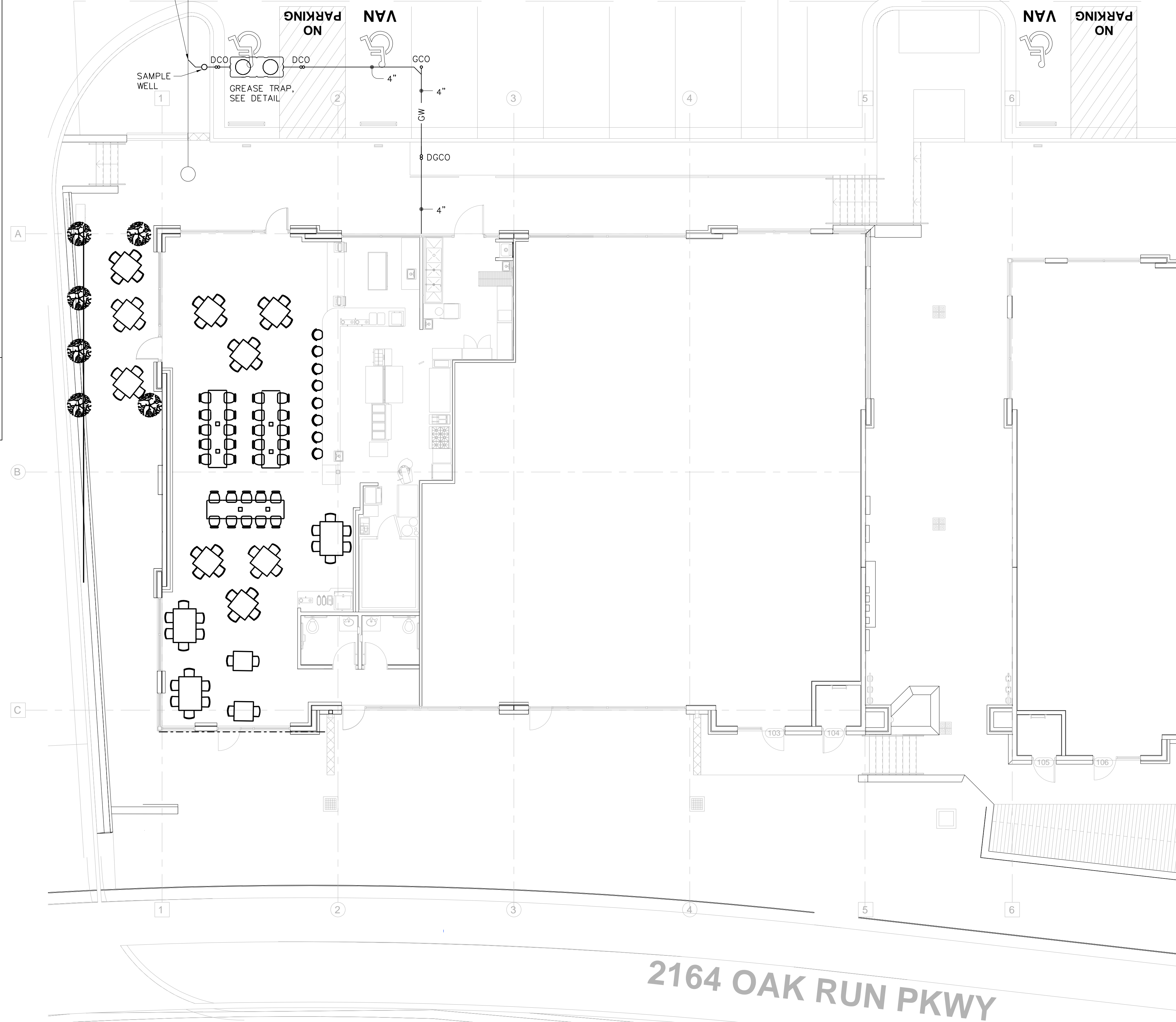
CERTIFIED PERFORMANCE

Great Basin™ hydromechanical grease interceptors are third party performance-tested and listed by (APWC) to ASME #A112.14.3 and CSA B481.1 grease interceptor standards and greatly exceed requirements for grease separation and storage. They are compliant to the Uniform Plumbing Code and the International Plumbing Code.

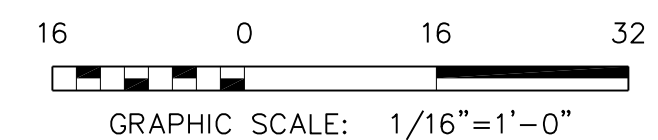
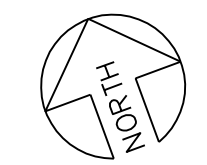
Type D certification does not require a flow control

MODEL NUMBER: GB-250	PART NUMBER: 4055-007-02		
DESCRIPTION: GB-250 GREASE INTERCEPTOR 100 GPM / 200 GPM, 4" INLET/OUTLET, H-20 RATED CAST IRON COVERS			
DWG BY: C.SINCLAIR DATE: 5/4/2022 REV: - ECO: -		6455 Woodland Dr Shawnee, KS 66218 Tel: 913-951-3300 Fax: 913-951-3399 schierproducts.com	

CONNECT 4" WASTE TO EXISTING WASTE LINE. FIELD VERIFY WASTE LINE LOCATION, SIZE AND FLOW LINE.



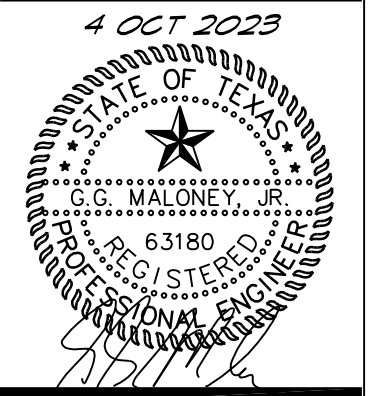
2164 OAK RUN PKWY



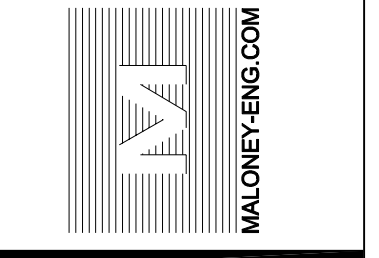
MLA
MICHAEL LEGG ARCHITECTURE
Michael Legg, LEED AP
NCARB, AIA, RIBA, SACAP
2818 High Timber Pass St
San Antonio, Texas 78290
ph: 214-445-8855
michael@mlaarchitecture.com
www.michaelleggarchitecture.com

DRAWING COORDINATION
Architectural, Landscape, Civil, Structural, Mechanical and Electrical drawings are interrelated. General Contractor and all Sub Contractors shall review and coordinate the entire set of drawings and specifications

THE SEAL APPEARING ON THIS DOCUMENT WAS AUTHORIZED BY G.G. MALONEY, JR., P.E. 63180 ON OCT 4, 2023. ALTERATION OF SEALED DOCUMENTS WITHOUT PROPER NOTIFICATION OF THE RESPONSIBLE ENGINEER IS AN OFFENSE UNDER THE TEXAS ENGINEERING PRACTICE ACT.



MALONEY ASSOCIATES
CONSULTING ENGINEERS, INC.
F-1400
1028 TRAILWOOD DR
HURST, TEXAS 76058
(817) 288-0884



SITE MEP PLAN
'BREAKFAST Restaurant at Veramendi'
2164 Oak Park Drive
New Braunfels, Texas

DATE	DESCRIPTION	BY

SCALE:
AS NOTED

PROJECT NO.
05-05-22

SHEET NO.
ME1.1