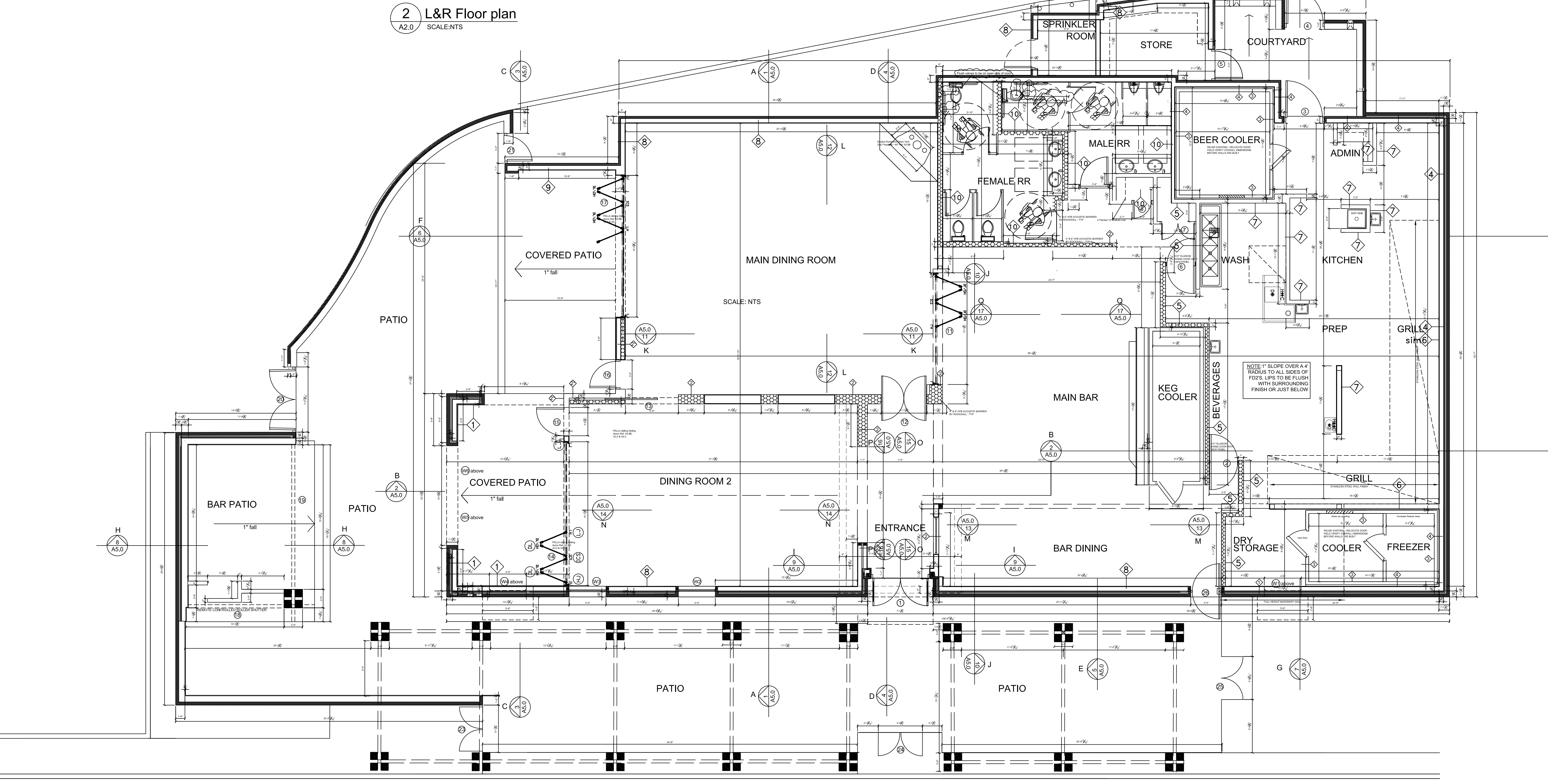


2 L&R Floor plan
 A2.0 SCALE: NTS



1 L&R Floor plan
 A2.0 SCALE: 1/8"=1'-0"

L&R Floor Plan
 23110 WEST I-10
 LOT 3 Dominion Creek,
 San Antonio, 78257 Texas

DATE	DESCRIPTION	BY
Rev 01	Bar side width at RR increased by .66 sq.ft.	
REV 02	ADA amendments as clouded	

PROJECT NO.
 05-05-22

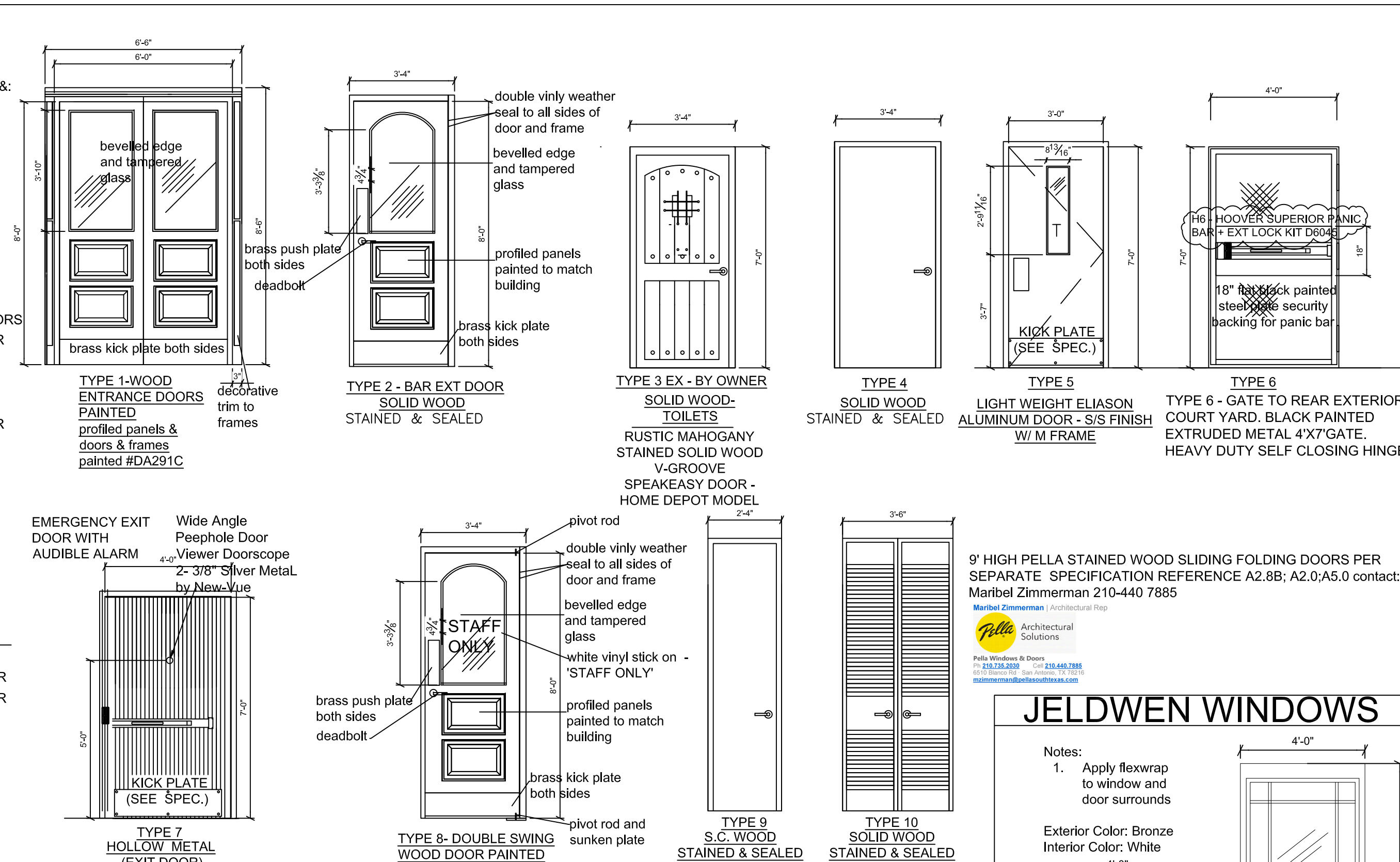
SHEET NO.
 A2.0

DOOR SCHEDULE

(SUR-LOCK OEA - 2000L PANIC BAR)

DOOR NUMBER	HARDWARE SET	DOOR TYPE	DOOR OPENING SIZE	DOOR THICKNESS	MATERIALS	GENERAL NOTES
1	H3	1	3'-0" X 8'-0" PAIR	2 1/4"	SOLID HARDWOOD PAINTED WOOD & GLAZED	1. UNDERCUT ALL INTERIOR DOORS 1" FROM FINISH FLOOR
2	H2	5	3'-0" X 7'-0"	1"	SOLID WOOD STAINED & SEALED	2. PANIC BAR: SUR-LOCK - 2000L (REQUIRED AT ALL EMERGENCY EXITS) & (1)CAL - ROYAL 4400 RIM TYPE EXIT DEVICE
3	H1	7	4'-0" X 7'-0"	1 3/4"	SOLID WOOD - STAINED	3. RR PARTITION DOORS - BRADLEY PARTITION SYSTEM WITH COAT HOOKS AND ADA LATCHES
4	H6	6	4'-0" X 7'-0"	1"	SOLID CORE WOOD - STAINED WOOD & GLAZED	4. FENCE GATE HARDWARE FOR D20/21/23/24 & 25; BY FENCE MANUFACTURER
5	H4	4	3'-0" X 7'-0"	1 3/4"	SOLID WOOD LOUVERED & STAINED	5. PANIC BARS & CLOSERS FOR DOUBLE DOORS
6	H2	5	3'-0" X 7'-0"	1"	SOLID WOOD LOUVERED & STAINED	6. ELIASON ALUMINIUM DOUBLE SWING DOOR
7	H7	10	21" X 8'-0" pair	1 3/4"	SOLID WOOD LOUVERED & STAINED	7. LOUVERED double door stained and sealed
8	H8	9	2'-0" X 8'-0"	1 3/4"	SOLID WOOD LOUVERED & STAINED	8. owner provided doors - GC to install & provide ADA signs and 4 black hinges per door
9	-	3	3'-0" X 7'-0"	1 3/4"	SOLID WOOD LOUVERED & STAINED	9. owner provided doors - GC to install & provide ADA signs and 4 black hinges per door
10	-	3	3'-0" X 7'-0"	1 3/4"	SOLID WOOD LOUVERED & STAINED	10. owner provided ex. doors with hardware: #9#10#12#13
11	-	-	-	-	-	11. PELLA SLIDING FOLDING DOORS PER SEPARATE SPECIFICATION
12	-	-	-	-	-	12. EXISTING PIVOT DOUBLE DOORS SUPPLIED BY OWNER
13	-	-	-	-	-	13. EXISTING SLIDING POCKET DOOR SUPPLIED BY OWNER
14	-	-	-	-	-	14. PELLA SLIDING FOLDING DOORS PER SEPARATE SPECIFICATION
15	H5	2	3'-0" X 8'-0"	-	-	15. (1) PANIC BAR & CLOSER FOR DOOR
16	H5	2	3'-0" X 8'-0"	-	-	16. (1) PANIC BAR & CLOSER FOR DOOR
17	-	-	-	-	-	17. PELLA SLIDING FOLDING DOORS PER SEPARATE SPECIFICATION
18	-	-	-	-	-	18. ALUMATEC S-2 SOLID ROLLER SHUTTER - COLOR BEIGE
19	-	-	-	-	-	19. ALUMATEC S-2 SOLID ROLLER SHUTTER - COLOR BEIGE
20	-	-	-	-	-	20. 6'-8" X 6'-2" varies
21	-	-	-	-	-	21. 3'-3" X 7'-0"
22	H4	4	3'-0" X 7'-0"	-	-	22. 4'-8" X 30"
23	-	-	-	-	-	23. 4'-8" X 30"
24	-	-	-	-	-	24. 4'-8" X 30"
25	-	-	-	-	-	25. 4'-8" X 30"
26	-	-	-	-	-	26. 3'-0" X 8'-0"

DOOR TYPES



DOOR HARDWARE

HARDWARE SET: H-1
 18g HOLLOW METAL SECURITY DOOR - PAINT COLOR BALANCED BEIGE
 PROVIDE ALARMED PANIC BAR (SUR-LOCK OEA - 2000L PANIC BAR)
 DOOR CLOSER - HEAVY DUTY ANSI GRADE "1"
 4 HEAVY DUTY HINGES
 1/2" LEXAN WINDOW
 40" W x 24" HIGH STAINLESS STEEL KICK PLATE
 WRAP AROUND DOOR BOTTOM (PRECUT)
 THRESHOLD (PRECUT)
 RAIN DIVERTER (PRECUT)

HARDWARE SET: H-2
 ELIASON LWP-3 COMPLETE WITH HARDWARE, KICK PLATES AND HINGES. INSTALL WITHIN STANDARD METAL FRAME.
 H-3 (1)CAL - ROYAL 4400 RIM TYPE EXIT DEVICE FOR DOUBLE DOOR
 Deadbolt 8031.050 for 1 5/8" Door Prep
 2598.050 Bristol Pull for outside exit doors
 Kickplate x2 2000.050, 0834 8"x34", .05 thick brass or 2000.050, 0834 6"x34"
 BRASS RECESSED FLUSH BOLTS & FLOOR DOOR STOPS
 H-4 DEADBOLT 1-5/8" DOOR PREP MODEL NUMBER: 8031.056
 STANDARD STAINLESS STEEL PULL HANDLE
 H-5 (1)CAL - ROYAL 4400 RIM TYPE EXIT DEVICE FOR SINGLE DOOR
 Deadbolt 8031.050 for 1 5/8" Door Prep
 2598.050 Bristol Pull for outside exit doors
 Kickplate x2 2000.050, 0834 8"x34", .05 thick brass or 2000.050, 0834 6"x34"
 FLOOR DOOR STOP

WINDOW NOTES

INTERIOR BLINDS - W1;W2;W3;W4
 AUTOMATIC PLUG IN SOLAR SHADES - PROVIDE UV PROTECTION, FADE PREVENTION AND GLARE REDUCTION WITH SIMPLE REMOTE CONTROL.
 THE SHADE STORE
 /Namo Quality Market, 255 E Basse Road, Suite 908, San Antonio, TX 78209
 726.226.2240 / Email: design@theshadestore.com

WINDOW & DOOR AWNINGS: W1-W6 & D1-D26
 ABOVE ALL AWNINGS - 1101 S Grand Ave #A Santa Ana, CA 92705 - (714) 556-1151
 Spear Solarflex PTFE thread awnings over all windows & doors #1 & #26

RESTROOM/ACCESSORY SCHEDULE

MARK	DESCRIPTION	MFR / MODEL	FURN. INST.	FINISH	REMARKS
(R1)	WTCORLED 3' FROSTED ALL 4 SIDES WITH FINGERPRINT PROOF PROTECTION		CONTR	FRAMED MIRROR	
(R2)	GRAB BARS	BOBRICK B-6206	CONTR	30" REAR 7/42" SIDES X 1 1/2" DIA. BARS SHALL NOT ROTATE IN THEIR FITTINGS - STRENGTH SHALL COMPLY WITH SUBSECTION 4.26.3. ADA-TAS	STAINLESS STEEL TEXTURE GRIP
(R3)	TISSUE DISPENSER CONTINUOUS FLOW	BOBRICK B-2888	CONTR	SURFACE MOUNTED, MULTI ROLL CONTINUOUS FLOW	ADA-TAS STAINLESS STEEL
(R5)	AUTOMATIC SOAP DISPENSER	BOBRICK B-828 SUREFLOW	CONTR	FEMALE RR - AUTOMATIC TOUCHLESS PLUS ACCESSORIES AS REQUIRED	STAINLESS STEEL
(R6)	PAPER TOWEL DISPENSER	BOBRICK B-29744	CONTR	6V - AUTOMATIC/TOUCHLESS SEMI-RECESSED	ADA-TAS STAINLESS STEEL
(R7)	Koala Kare KB200-00 Horizontal Baby Changing Station / Table - Cream				
(R8)	AUTOMATIC SOAP DISPENSER BOBRICK B-8263.18		CONTR	MALE RR - AUTOMATIC TOUCHLESS PLUS ACCESSORIES AS REQUIRED	

GENERAL NOTES

1. ALL CONSTRUCTION IS TO CONFORM TO LOCAL AND STATE BUILDING CODES & ORDINANCES AND SHALL COMPLY WITH ANSI 117.1 & ADA ACCESSIBILITY GUIDELINES.

2. ALL EXCLUSIONS AND CLARIFICATIONS SHOULD BE APPROVED IN WRITING SEVEN (7) WORKING DAYS PRIOR TO BID OR BID MAY BE DAYS PRIOR TO BID OR BID MAY BE DISQUALIFIED.

3. G.C. TO PROVIDE & INSTALL THREE (3) FIRE EXTINGUISHERS AT LOCATIONS DIRECTED BY FIRE OFFICIAL.

4. G.C. IS RESPONSIBLE FOR PROPER LOCATION OF ALL REQUIRED NONWOOD WOOD & MISC. STEEL FRAMING AND ANY ADDITIONAL FRAMING AS REQUIRED.

5. ALL CONSTRUCTION, INSTALLATION, ETC. SHALL BE PER INDUSTRY AND MANUFACTURER'S STANDARDS. G.C. TO PROVIDE TURKEY PROJECT.

FIXTURE MOUNTING HEIGHT SCHEDULE

LAVATORIES (MEASURED FROM FLOOR TO RIM)
 . ADULTS = 32" (28" MIN. KNEESPACE)
 . HANDICAPPED = 34" MAX.

WATER CLOSETS (MEASURED FROM FLOOR TO TOP OF SEAT)
 . ADULTS = 15"
 . HANDICAPPED = 17" TO 18"

HANDICAPPED GRAB BARS (MEASURED FROM FLOOR TO CENTERLINE OF BAR)
 . ADULTS = 34"

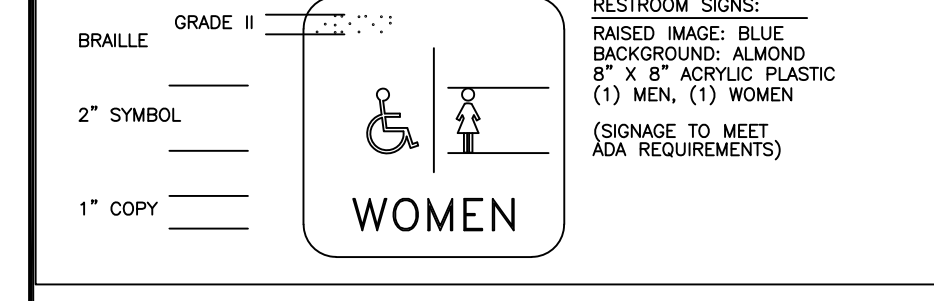
PAPER TOWEL DISPENSERS (MEASURED FROM FLOOR TO TOWEL SLOT)
 . ADULTS = 40"

TOILET TISSUE DISPENSER (MEASURED FROM FLOOR TO CENTERLINE OF ROLL)
 . ADULTS = 20"

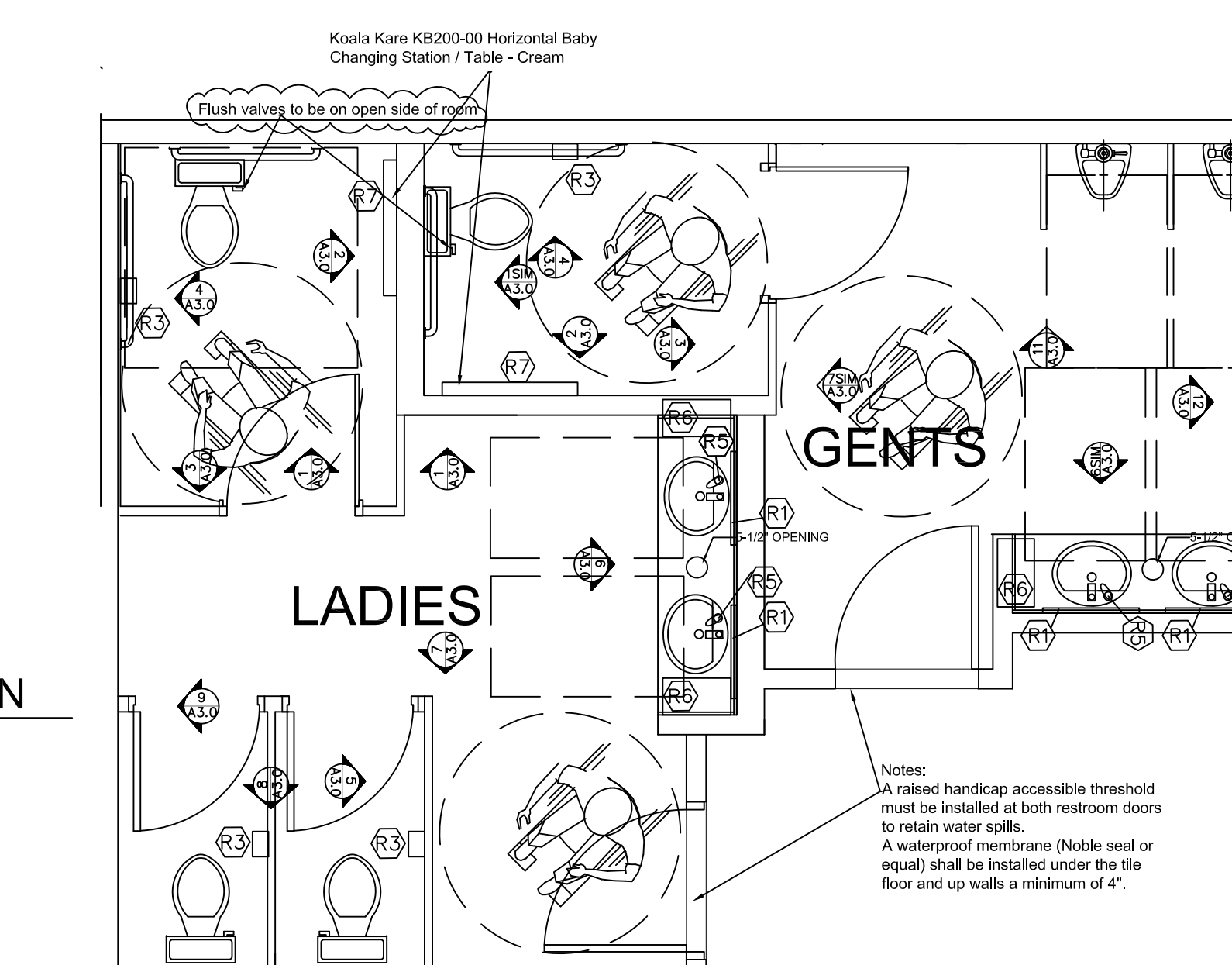
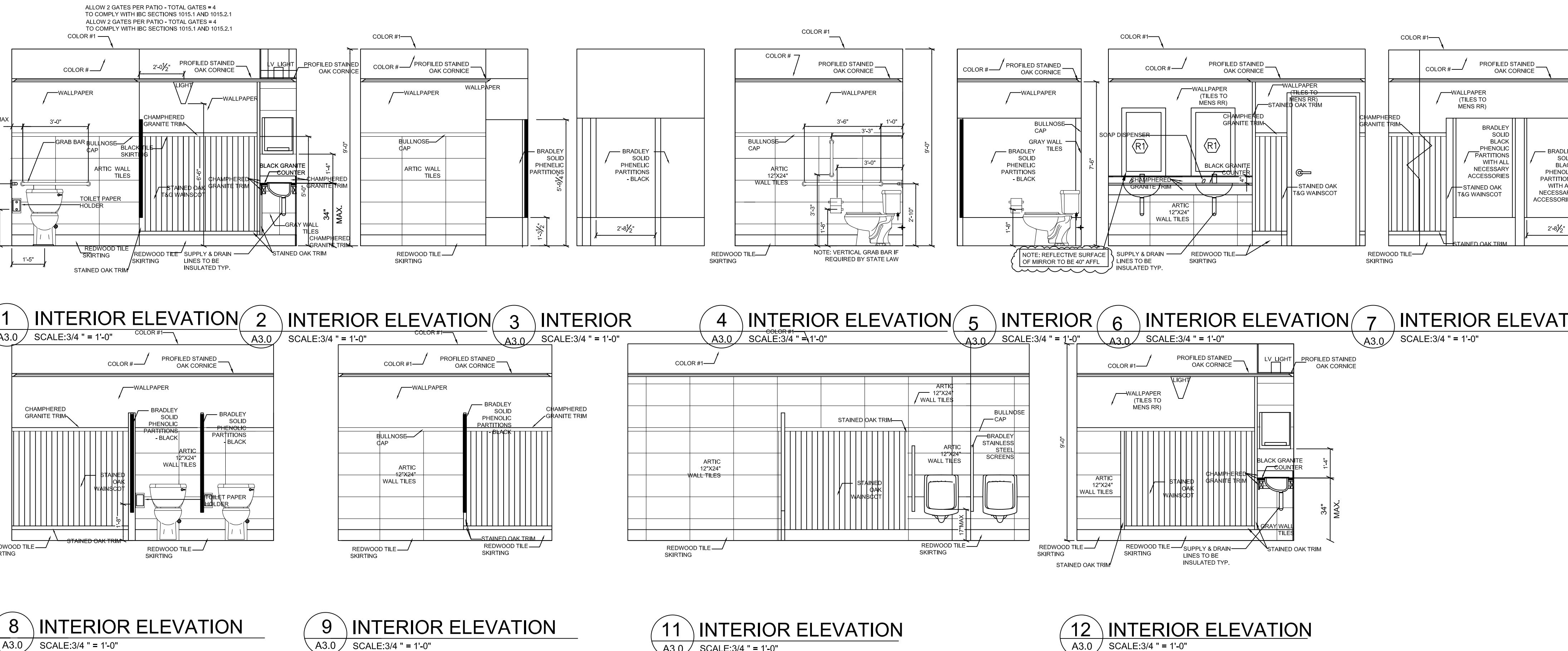
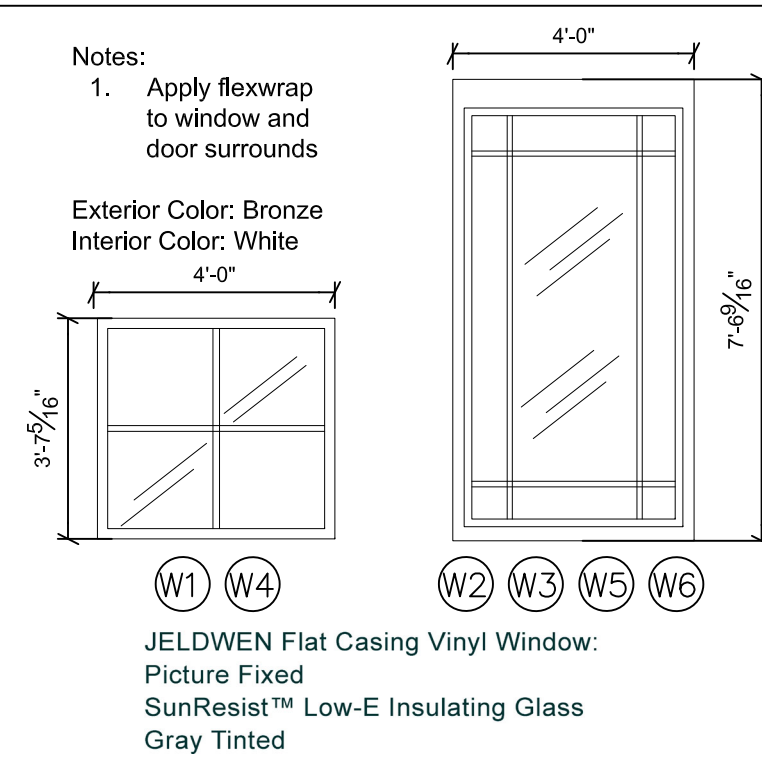
SOAP DISPENSER (MEASURED FROM FLOOR TO CENTERLINE OF PUSH BUTTON)
 . ADULTS = 38"
 . HANDICAPPED = 38"

MIRRORS (MEASURED FROM FLOOR TO BOTTOM OF MIRROR)
 . ADULTS = 40"

RESTROOM SIGNAGE



JELDWEN WINDOWS



10 ENLARGED PLAN

SCALE: 3/4" = 1'-0"



DRAWING COORDINATION
 Architectural, Landscape, Civil, Structural, Mechanical and Electrical drawings are interrelated. General Contractor and all Sub Contractors shall review and coordinate the entire set of drawings and specifications.

ROOM FINISH & DOOR WINDOW SCHEDULE
23110 WEST I-10
LOT 3 Dominion Creek,
San Antonio, 78257 Texas

DATE / REV #1	DESCRIPTION
08.21.23	ADA amendments as discussed - Refer to A2.0 for details

PROJECT NO. 05-05-22

SHEET NO.

A3.0