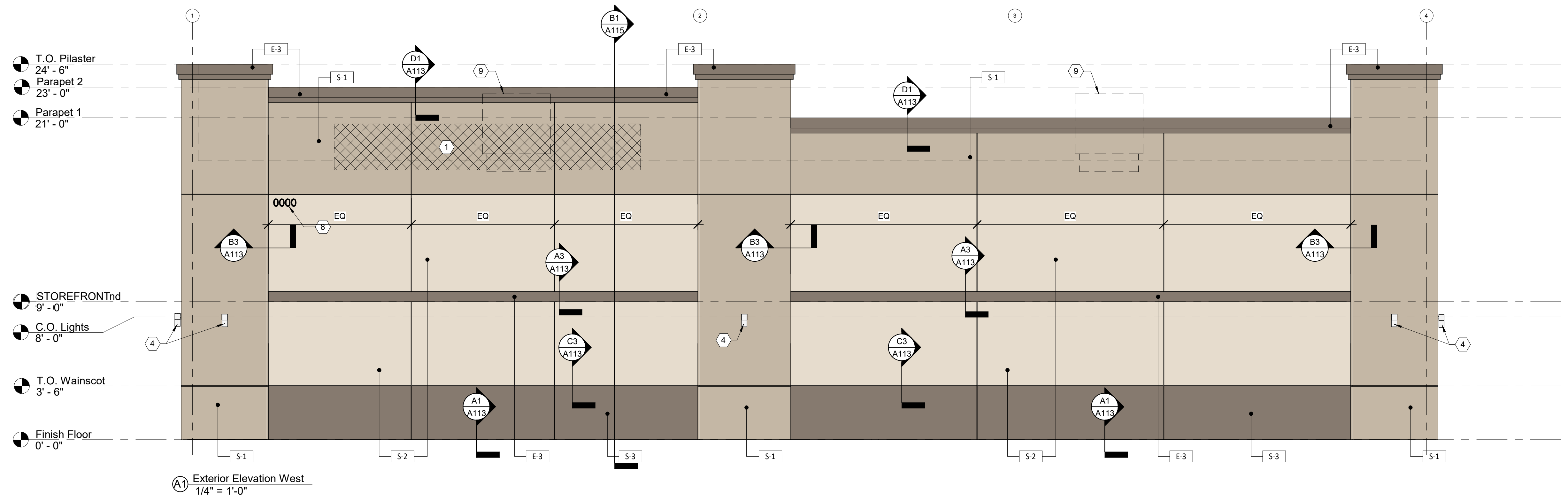
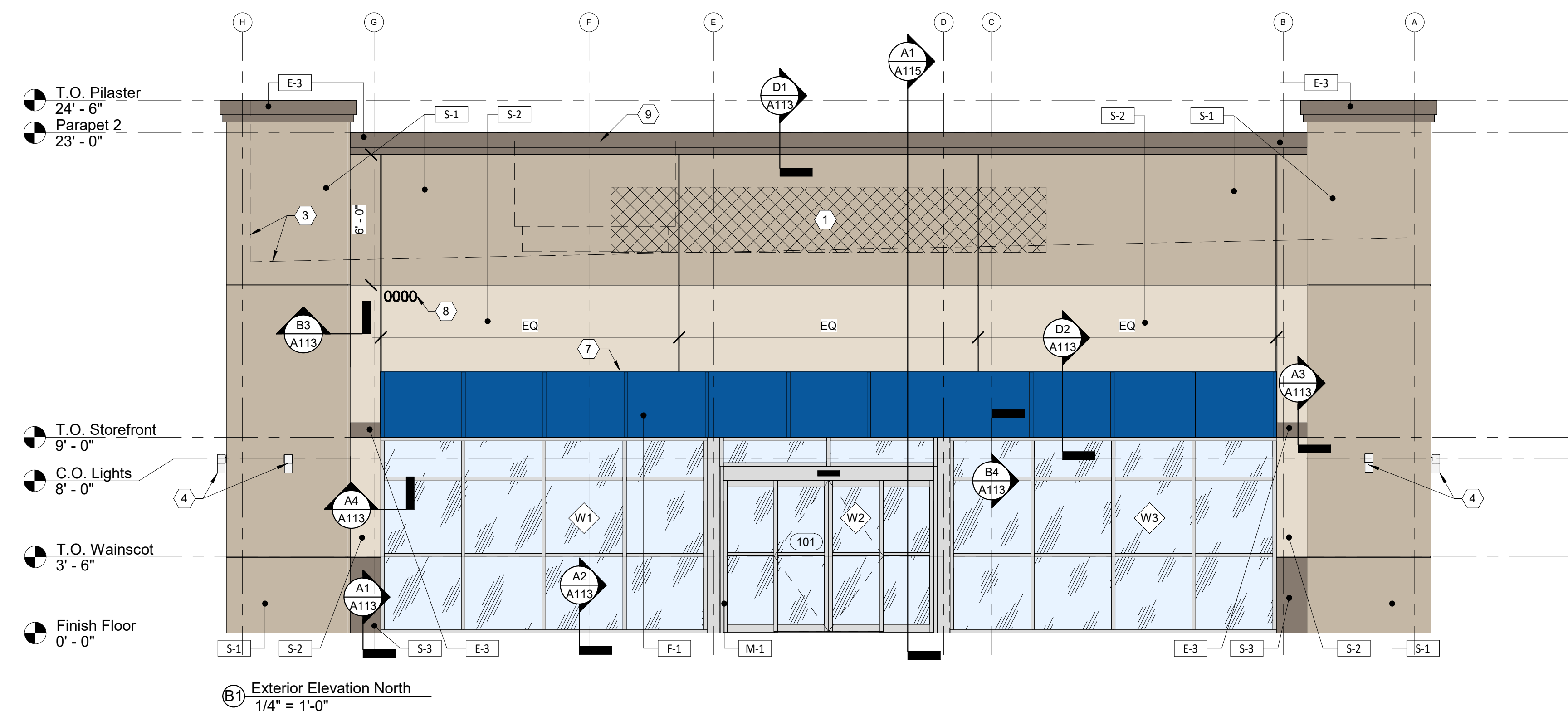
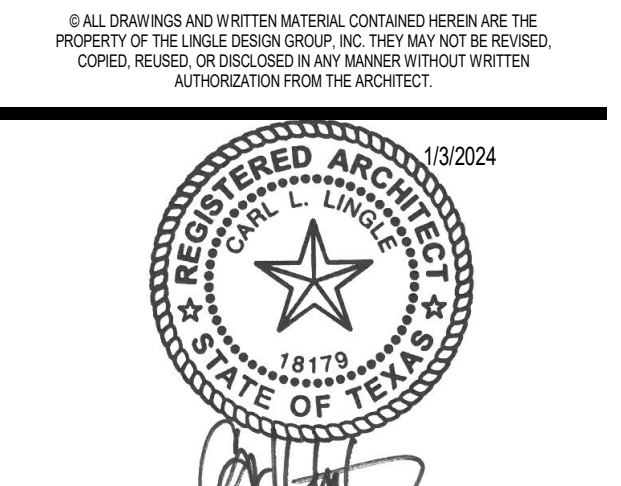


EXTERIOR FINISH SCHEDULE			
MARK	DESCRIPTION	MANUFACTURER & SPEC	SAMPLE
E-1	EIFS - FIELD	SHERWIN-WILLIAMS COLOR: SW 7506 LOGGIA (SCORE LINES PER ELEVATIONS)	
P-1	PAINT		
E-2	EIFS - BAY	SHERWIN-WILLIAMS COLOR: SW 6105 DIVINE WHITE (PARAPET FLASHING TO MATCH)	
P-2	PAINT		
E-3	EIFS - FIELD	SHERWIN-WILLIAMS COLOR: SW 7025 BACKDROP (SCORE LINES PER ELEVATIONS)	
P-3	PAINT		
M-1	ANODIZED ALUMINUM	COLOR: CLEAR ANODIZED ALUMINUM	
F-1	FABRIC OVER METAL FRAME AWNING	COLOR: SHERWIN WILLIAMS BLUE (AWNINGS)	

EXTERIOR ELEVATION CODED NOTES	
1	SIGNAGE UNDER SEPARATE PERMIT
2	UTILITY METER BANK - PAINT TO MATCH ADJACENT FINISH - COORDINATE WITH CIVIL
3	ROOF LINE BEHIND PARAPET
4	EXTERIOR LIGHTING - SEE SCHEDULE ON SHEET A130
5	KNOX BOX - MODEL 3200 RECESSED - COORDINATE PLACEMENT WITH FIRE PREVENTION BUREAU
6	BUZZER BUTTON
7	NEW METAL AWNING - MAPES LUMISHADE (OR EQUIVALENT) - 8" FASCIA
8	BUILDING ADDRESS PER 2015 IFC 505.1-4" HIGH MIN., 1/2" MIN. STROKE WIDTH
9	ROOF TOP UNIT BEYOND
10	ROOF OVERFLOW DRAIN NOZZLE



LINGLE DESIGN GROUP, INC.
LINGLE DESIGN GROUP, INC.
158 WEST MAIN STREET
LENA, IL 61048
815.369.9155
1764 BLAKE ST
DENVER, CO 80202
303.974.5875
WWW.LINGLEDESIGN.COM



PROJECT #:
TBD
DRAWN BY: BA
CHECKED BY: MP

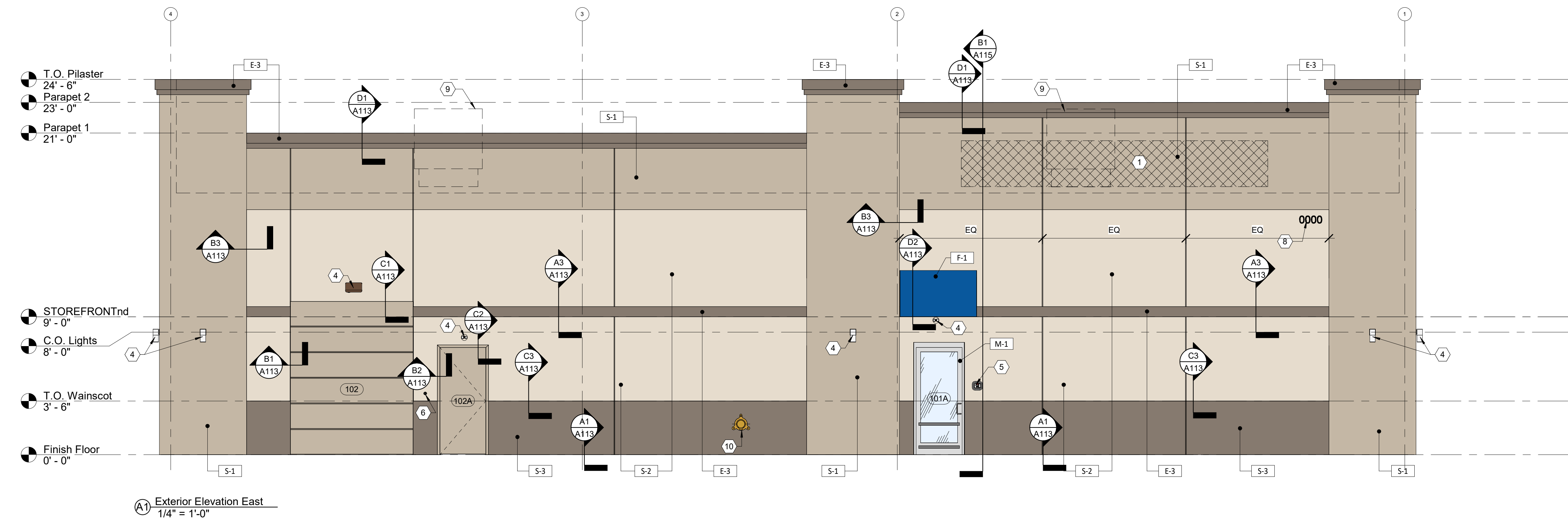
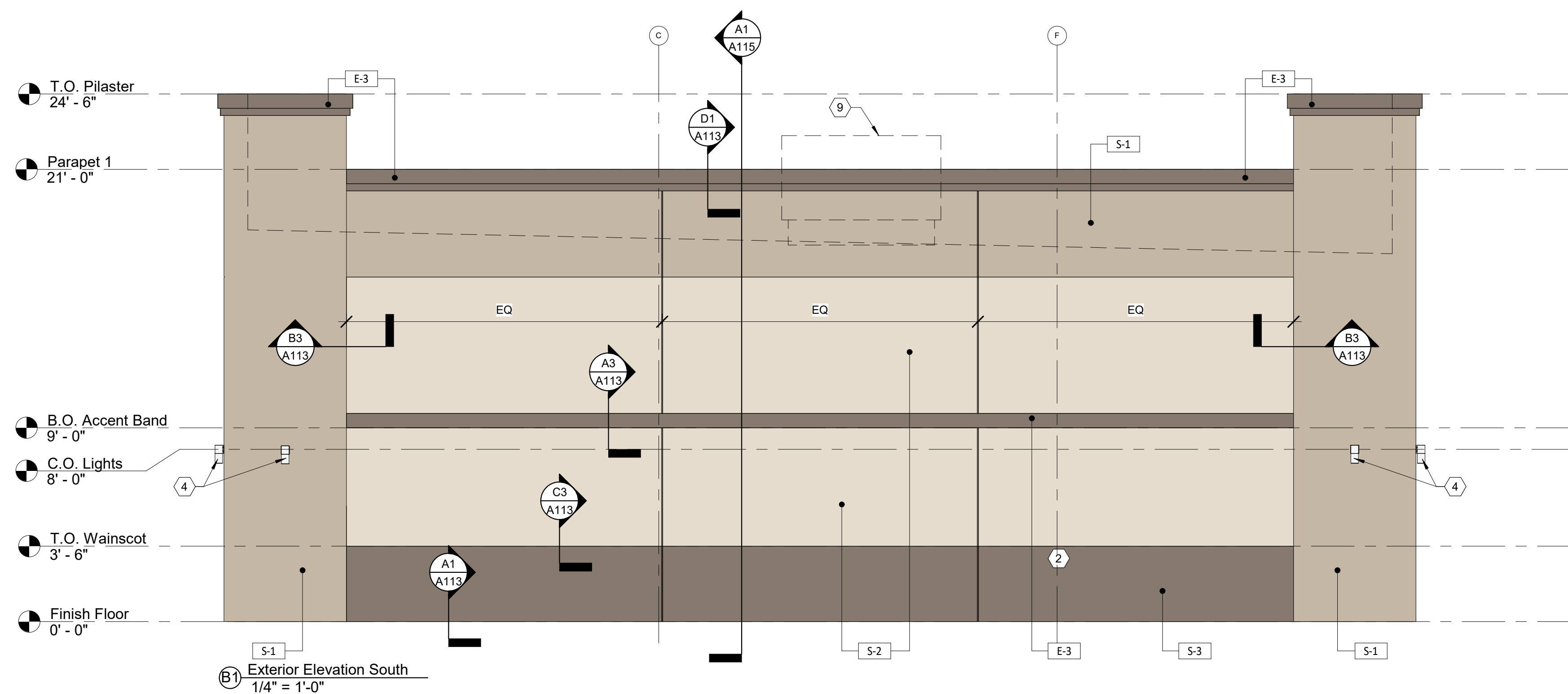
REVISION	DATE
△	REV 1 - 11/22/2023
△	REV 1 - 11/30/2024
△	
△	
△	
△	

SHERWIN WILLIAMS

STORE #:
XXXX
ADDRESS:
2101 AVONDALE-HASLET
RD, HASLET, TX 76052

SHEET TITLE:
Exterior Elevations &
Window Schedule

SHEET NUMBER:
A200

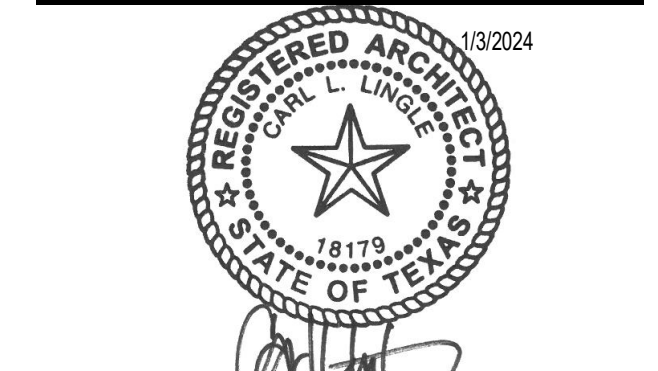


EXTERIOR FINISH SCHEDULE			
MARK	DESCRIPTION	MANUFACTURER & SPEC	SAMPLE
E-1	EIFS - FIELD	SHERWIN-WILLIAMS COLOR: SW 7506 LOGGIA (SCORE LINES PER ELEVATIONS)	
P-1	PAINT		
E-2	EIFS - BAY	SHERWIN-WILLIAMS COLOR: SW 6105 DIVINE WHITE (PARAPET FLASHING TO MATCH)	
P-2	PAINT		
E-3	EIFS - FIELD	SHERWIN-WILLIAMS COLOR: SW 7025 BACKDROP (SCORE LINES PER ELEVATIONS)	
P-3	PAINT		
M-1	ANODIZED ALUMINUM	COLOR: CLEAR ANODIZED ALUMINUM	
F-1	FABRIC OVER METAL FRAME AWNING	COLOR: SHERWIN WILLIAMS BLUE (AWNINGS)	

- EXTERIOR ELEVATION CODED NOTES**
- SIGNAGE UNDER SEPARATE PERMIT
 - UTILITY METER BANK - PAINT TO MATCH ADJACENT FINISH - COORDINATE WITH CIVIL
 - ROOF LINE BEHIND PARAPET
 - EXTERIOR LIGHTING - SEE SCHEDULE ON SHEET A130
 - KNOX BOX - MODEL 3200 RECESSED - COORDINATE PLACEMENT WITH FIRE PREVENTION BUREAU
 - BUZZER BUTTON
 - NEW METAL AWNING - MAPES LUMISHADE (OR EQUIVALENT) - 8" FASCIA
 - BUILDING ADDRESS PER 2015 IFC 505.1 - 4" HIGH MIN., 1/2" MIN. STROKE WIDTH
 - ROOF TOP UNIT BEYOND
 - ROOF OVERFLOW DRAIN NOZZLE

LINGLED DESIGN GROUP, INC.
 158 WEST MAIN STREET
 LENA, IL 61048
 815.369.9155
 1764 BLAKE ST
 DENVER, CO 80202
 303.974.5875
 WWW.LINGLEDDESIGN.COM

© ALL DRAWINGS AND WRITTEN MATERIAL CONTAINED HEREIN ARE THE PROPERTY OF THE LINGLED DESIGN GROUP, INC. THEY MAY NOT BE REVISED, COPIED, REPRODUCED, OR DISCLOSED IN ANY MANNER WITHOUT WRITTEN AUTHORIZATION FROM THE ARCHITECT.



PROJECT #:
TBD
 DRAWN BY: BA
 CHECKED BY: MP

PERMIT SET - 11/22/2023
 REV 1 - 11/30/2024

SHERWIN WILLIAMS

STORE #:
XXXX
 ADDRESS:
2101 AVONDALE-HASLET
RD, HASLET, TX 76052

SHEET TITLE:
Exterior Elevations

SHEET NUMBER:
A201