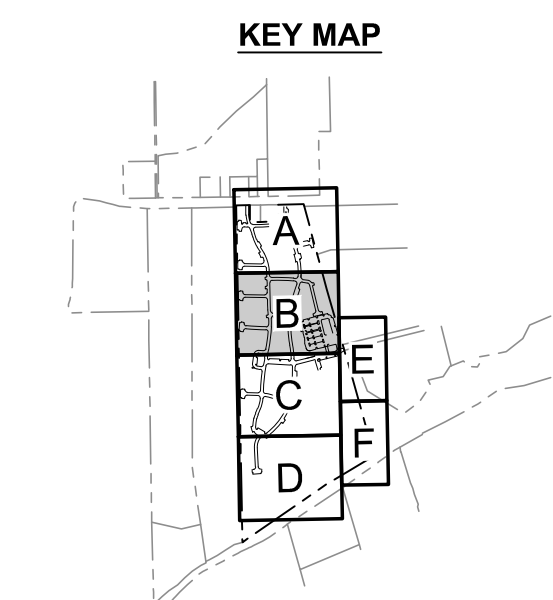
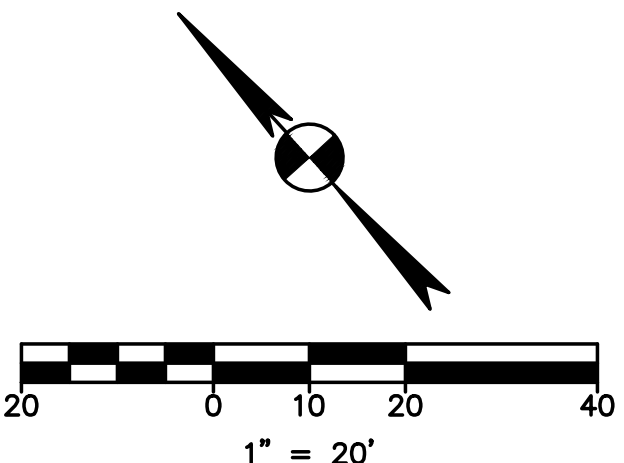
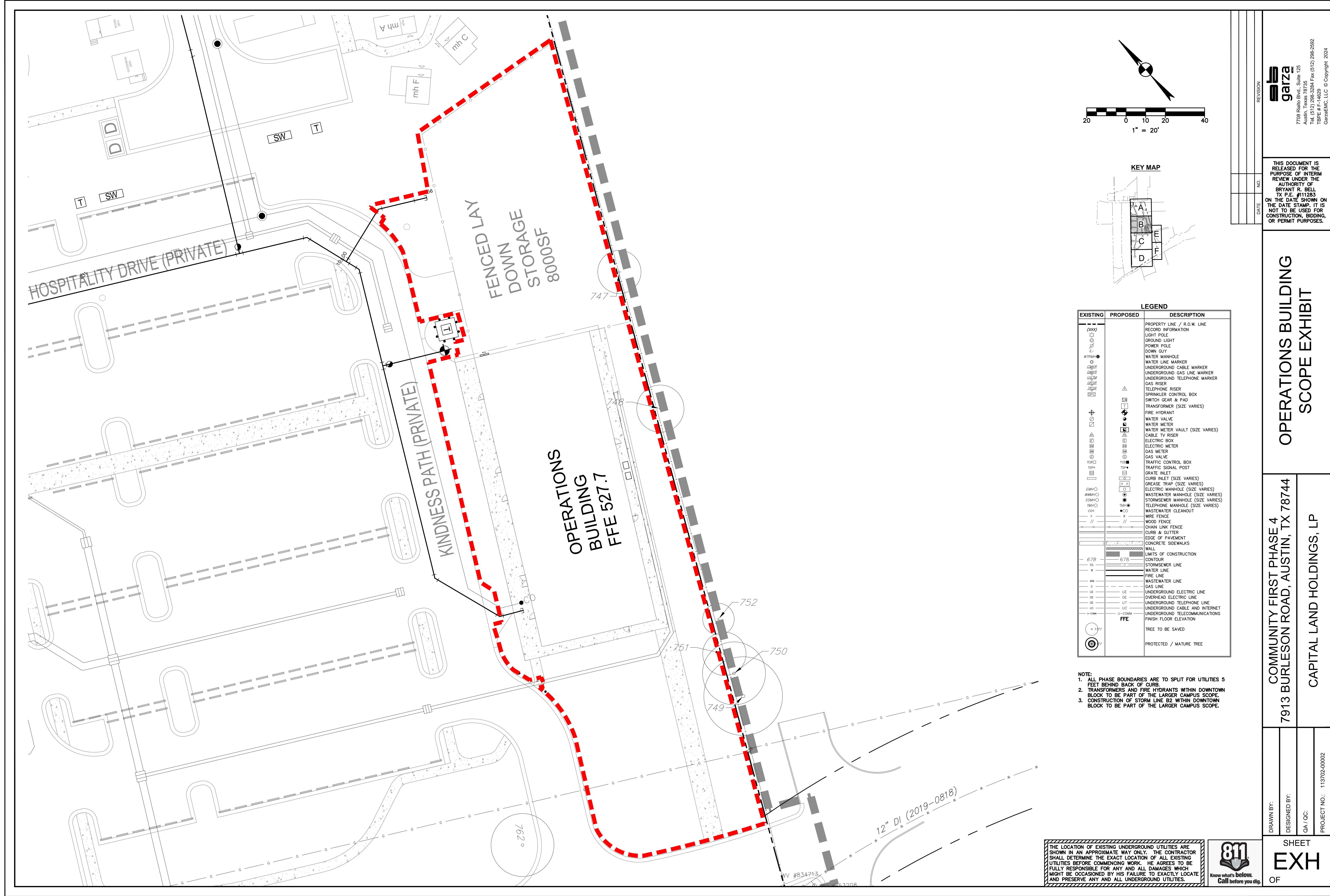


**Project name: Mobile Loaves and Fishes-Operations Building -Phase 4**

**Bid due: June 28<sup>th</sup>,2024 12pm**

**Bid Scope**

- Please refer to the bid scope pdf below. Limits of Construction is within the curb.



EXISTING	PROPOSED	DESCRIPTION
---	---	PROPERTY LINE / R.O.W. LINE
(D&D)		RECORD INFORMATION
○	○	LIGHT POLE
○	○	GROUND LIGHT
○	○	POWER POLE
○	○	DOWN GUY
○	○	WATER MANHOLE
○	○	WATER LINE MARKER
○	○	UNDERGROUND CABLE MARKER
○	○	UNDERGROUND GAS LINE MARKER
○	○	UNDERGROUND TELEPHONE MARKER
○	○	GAS RISER
○	○	TELEPHONE RISER
○	○	SPRINKLER CONTROL BOX
○	○	SWITCH GEAR & PAD
○	○	TRANSFORMER (SIZE VARIES)
○	○	FIRE HYDRANT
○	○	WATER VALVE
○	○	WATER METER
○	○	WATER METER VAULT (SIZE VARIES)
○	○	CABLE TV RISER
○	○	ELECTRIC BOX
○	○	ELECTRIC METER
○	○	GAS METER
○	○	TRAFFIC CONTROL BOX
○	○	TRAFFIC SIGNAL POST
○	○	GRATE INLET
○	○	CURB INLET (SIZE VARIES)
○	○	GREASE TRAP (SIZE VARIES)
○	○	ELECTRIC MANHOLE (SIZE VARIES)
○	○	WASTEWATER MANHOLE (SIZE VARIES)
○	○	STORMSEWER MANHOLE (SIZE VARIES)
○	○	TELEPHONE MANHOLE (SIZE VARIES)
○	○	WASTEWATER CLEANOUT
○	○	WIRE FENCE
○	○	WOOD FENCE
○	○	CHAIN LINK FENCE
○	○	CURB & GUTTER
○	○	EDGE OF PAVEMENT
○	○	CONCRETE SIDEWALKS
○	○	WALL
○	○	LIMITS OF CONSTRUCTION
○	○	CONTOUR
○	○	STORMSEWER LINE
○	○	WATER LINE
○	○	WASTEWATER LINE
○	○	GAS LINE
○	○	UNDERGROUND ELECTRIC LINE
○	○	OVERHEAD ELECTRIC LINE
○	○	UNDERGROUND TELEPHONE LINE
○	○	UNDERGROUND CABLE AND INTERNET
○	○	UNDERGROUND TELECOMMUNICATIONS
○	○	LI-COMM
○	○	FFE
○	○	TREE TO BE SAVED
○	○	PROTECTED / MATURE TREE

- NOTE:
1. ALL PHASE BOUNDARIES ARE TO SPLIT FOR UTILITIES 5 FEET BEHIND BACK OF CURB.
  2. TRANSFORMERS AND FIRE HYDRANTS WITHIN DOWNTOWN BLOCK TO BE PART OF THE LARGER CAMPUS SCOPE.
  3. CONSTRUCTION OF STORM LINE B2 WITHIN DOWNTOWN BLOCK TO BE PART OF THE LARGER CAMPUS SCOPE.

THE LOCATION OF EXISTING UNDERGROUND UTILITIES ARE SHOWN IN AN APPROXIMATE WAY ONLY. THE CONTRACTOR SHALL DETERMINE THE EXACT LOCATION OF ALL EXISTING UTILITIES BEFORE COMMENCING WORK. HE AGREES TO BE FULLY RESPONSIBLE FOR ANY AND ALL DAMAGES WHICH MIGHT BE OCCASIONED BY HIS FAILURE TO EXACTLY LOCATE AND PRESERVE ANY AND ALL UNDERGROUND UTILITIES.



REVISION

NO.

DATE

garza

7708 Rialto Blvd., Suite 125  
Austin, Texas 78725  
Tel: (512) 288-3284 Fax: (512) 288-2592  
TBP# F-14629  
GarzaEMC, LLC © Copyright, 2024

THIS DOCUMENT IS RELEASED FOR THE PURPOSE OF INTERIM REVIEW UNDER THE AUTHORITY OF BRYANT R. BELL TX P.E. #11283 ON THE DATE SHOWN ON THE DATE STAMP. IT IS NOT TO BE USED FOR CONSTRUCTION, BIDDING, OR PERMIT PURPOSES.

OPERATIONS BUILDING  
SCOPE EXHIBIT

COMMUNITY FIRST PHASE 4  
7913 BURLESON ROAD, AUSTIN, TX 78744

CAPITAL LAND HOLDINGS, LP

DRAWN BY:

DESIGNED BY:

QA / OC:

PROJECT NO.: 113702-0002

SHEET  
EXH  
OF