

WO 150466  
& 150465

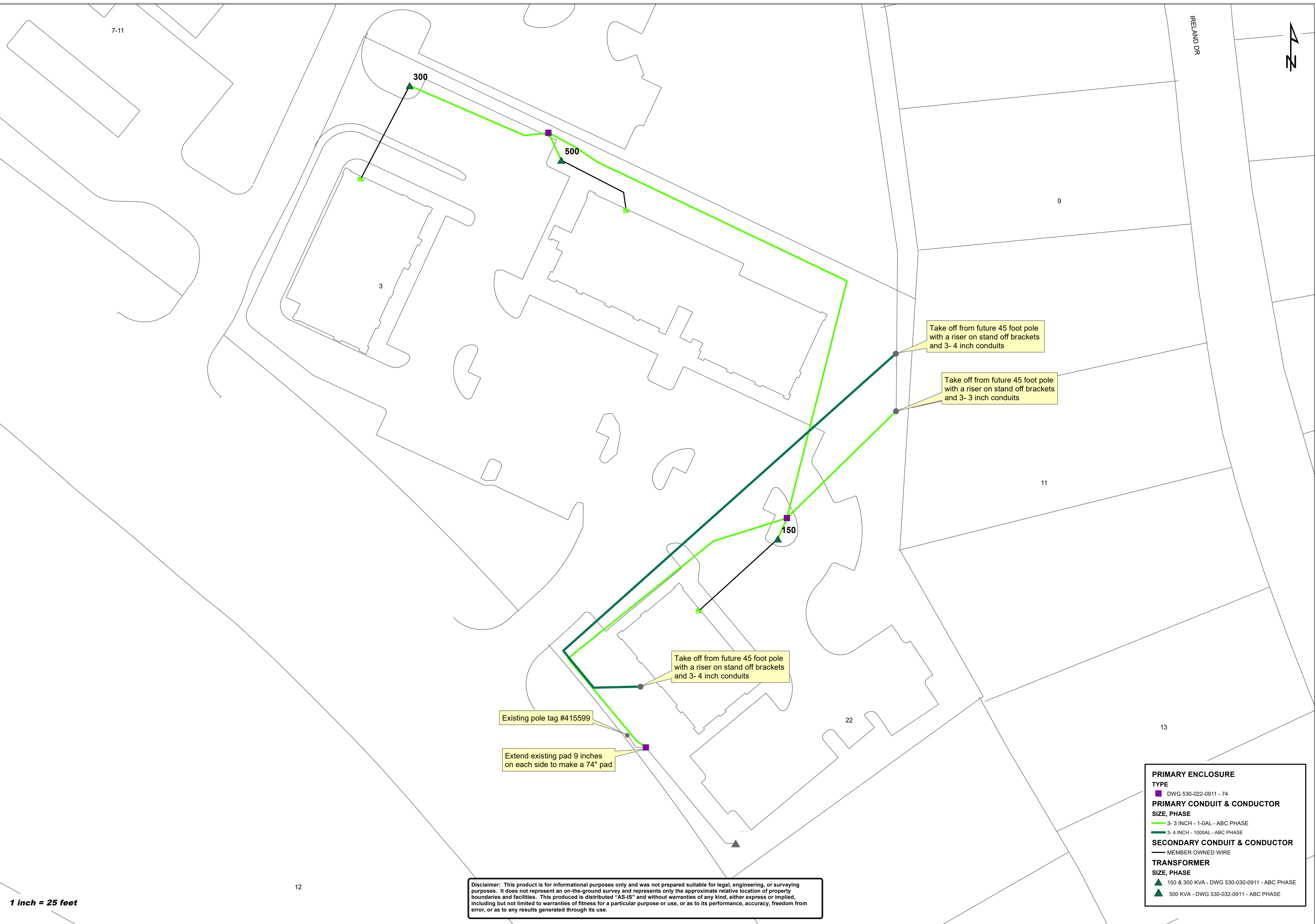
JOB NAME:  
CD\_BH240\_1900 BAGDAD RD UG RELO  
MR\_BH240\_1900 BAGDAD RD UG RELO  
JOB LOCATION:  
1900 BAGDAD ROAD  
CEDAR PARK, TX 78613

DEVELOPER/OWNER CONTACT:  
THE SQUARE AT CRYSTAL FALLS LLC  
C/O AMAN BANDALI  
PO BOX 279793  
AUSTIN, TX 78793

INSPECTIONS - P.E.C. REQUIRES 48 HOUR MINIMUM NOTICE  
FOR INSPECTION OF ALL FACILITIES INSTALLED. CONTACT  
CEDAR PARK PLANNING DEPARTMENT AT (800) 688-4791  
EXTENSION FEES TO SCHEDULE AN APPOINTMENT WITH THE ORIGINAL  
DESIGNER WILL BE CHARGED. THE DEVELOPER MAY BE  
SUBJECT TO ADDITIONAL FEES DUE TO CHANGES. P.E.C.  
RESERVES THE RIGHT TO CHANGE THIS DESIGN AT ANY TIME.

DESIGNED BY: BEN WOODS  
INSPECTOR BY: EDDIE WILLIAMS  
DATE PRINTED: FEBRUARY 3, 2022

P.O. Box 3620 - 1919 W. Wilkerson Blvd  
Cedar Park, TX 78613-2620  
(888)-554-4732 Toll Free  
(512)-219-2662 Austin Line  
(512)-257-2643 Fax  
www.pcc.coop



Take off from future 45 foot pole  
with a riser on stand off brackets  
and 3- 4 inch conduits

Take off from future 45 foot pole  
with a riser on stand off brackets  
and 3- 3 inch conduits

Take off from future 45 foot pole  
with a riser on stand off brackets  
and 3- 4 inch conduits

Existing pole tag #415599

Extend existing pad 9 inches  
on each side to make a 74" pad

Disclaimer: This product is for informational purposes only and was not prepared suitable for legal, engineering, or surveying purposes. It does not represent an on-the-ground survey and represents only the approximate relative location of property boundaries and facilities. This product is distributed "AS-IS" and without warranties of any kind, either express or implied, including but not limited to warranties of fitness for a particular purpose or use, or as to its performance, accuracy, freedom from error, or as to any results generated through its use.

**PRIMARY ENCLOSURE**

**TYPE**  
■ DWG 530-022-0911 - 74

**PRIMARY CONDUIT & CONDUCTOR**

**SIZE, PHASE**  
— 3- 3 INCH - 1-0AL - ABC PHASE  
— 3- 4 INCH - 1000AL - ABC PHASE

**SECONDARY CONDUIT & CONDUCTOR**  
— MEMBER OWNED WIRE

**TRANSFORMER**

**SIZE, PHASE**  
▲ 150 & 300 KVA - DWG 530-030-0911 - ABC PHASE  
▲ 500 KVA - DWG 530-032-0911 - ABC PHASE

1 inch = 25 feet