

FINISH SCHEDULE		
ITEM	MATERIAL	DETAILS
<b>Interior</b>		
<b>Women's and Men's Restroom</b>		
Flooring	Concrete	Sealed, slip resistant
Walls	CMU	Burnished, Integral Color (Color TBD w/ Arch)
Toilet Partitions	Tile	12x24, Porcelain (Color TBD w/ Arch); Wet walls ONLY; Floor to top of wall
Doors	Hiny Hiders	Color TBD w/ Arch
Equipment	Hardware	Dark Bronze finish; confirm with architect
	Mirrors	24" x 48" Bobrick Dark Bronze Channel frame with tempered glass mirror
	Toilet Paper Dispenser	Bradley 5425
	Soap Dispenser	Bobrick - B-26617 Series
	Grab Bars	Dark Bronze finish; 36" & 42"
	Changing Station	Bobrick - KB200; Gray w/ stainless cover
	Waste Receptacle	Bobrick - B-3644

**GENERAL NOTES**

- ALL EXPOSED STEEL TO BE PAINTED WITH DTM PAINT COLOR BY ARCHITECT
- FF & E INCLUDING FURNITURE, EXERCISE EQUIPMENT, AUDIO/VISUAL EQUIPMENT BY OWNER.
- CONTRACTOR TO VERIFY LOCATIONS OF ALL UTILITIES.
- NO DRY CHLORINE IS TO BE STORED ON SITE.
- GENERAL CONTRACTOR TO COORDINATE CONDUIT LINES WITH ARCH.
- SIGNAGE LIGHTING TO BE COORDINATED WITH ARCHITECT AND LANDSCAPE ARCHITECT.
- SIGNAGE PER 25 TAC 265.199 FOR A CLASS C FACILITY SHALL BE READILY VISIBLE FROM THE POOL.
- POOL EMERGENCY EQUIPMENT AND POOL SAFETY SIGNAGE TO BE COORDINATED WITH POOL CONSULTANT. REFER TO POOL AQUATIC DRAWINGS FOR COORDINATION.



hatch + ulland owen  
architects  
1010 East 11th Street  
Austin, Texas 78702  
T: 512.474.8548  
F: 512.474.8643  
www.hoarchitects.com

**CIVIL ENGINEER**  
CBD ENGINEERING & SURVEYING  
5501 West William Cannon Drive  
Austin, Texas 78749, US

**LANDSCAPE ARCHITECT**  
SEC PLANNING, LLC  
4201 W. Parmer Lane Bldg A, Suite 220  
Austin, Texas 78727

**PLUMBING, MECHANICAL, ELECTRICAL ENGINEER**  
Infinity MEP-s Consultants  
5316 W US Hwy 280 Service Rd Suite 480  
Austin, TX 78735

**STRUCTURAL ENGINEER**  
TDI Engineering, LLC  
5906 Old Fredericksburg Rd. Suite 300  
Austin, TX 78749

**THE COLONY - TREEHOUSE AMENITY CENTER**  
TREEHOUSE AMENITY CENTER PHASE 1

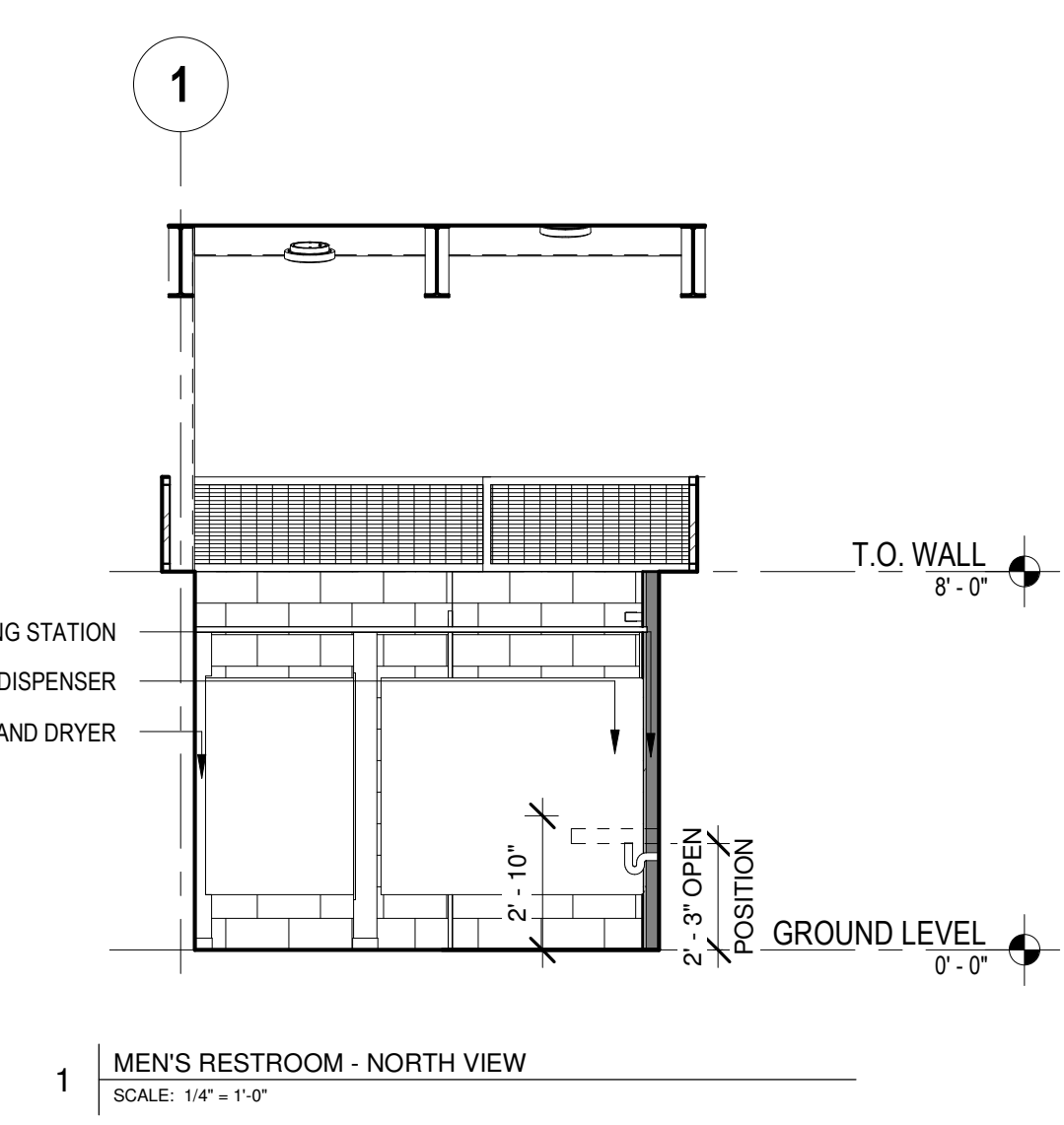
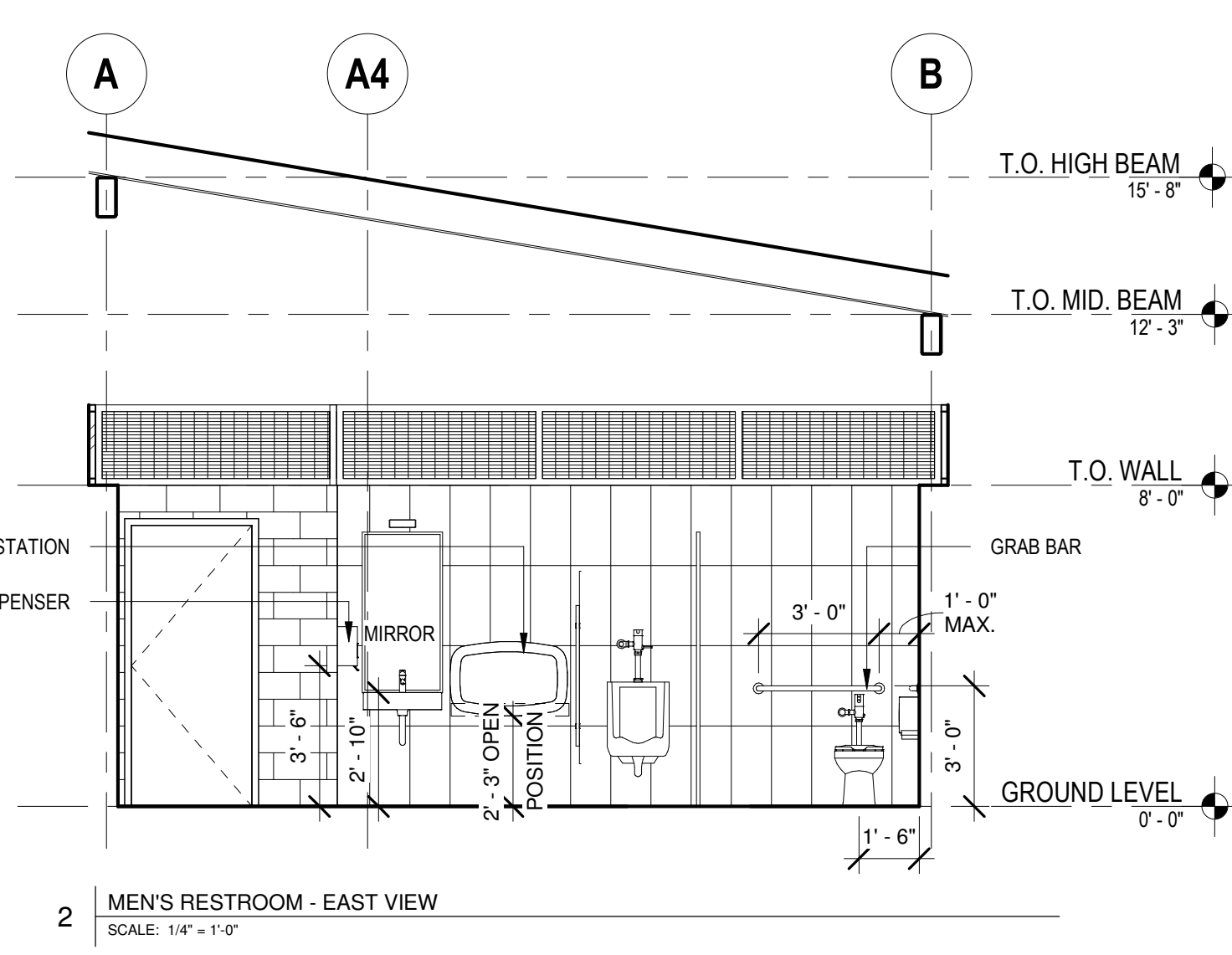
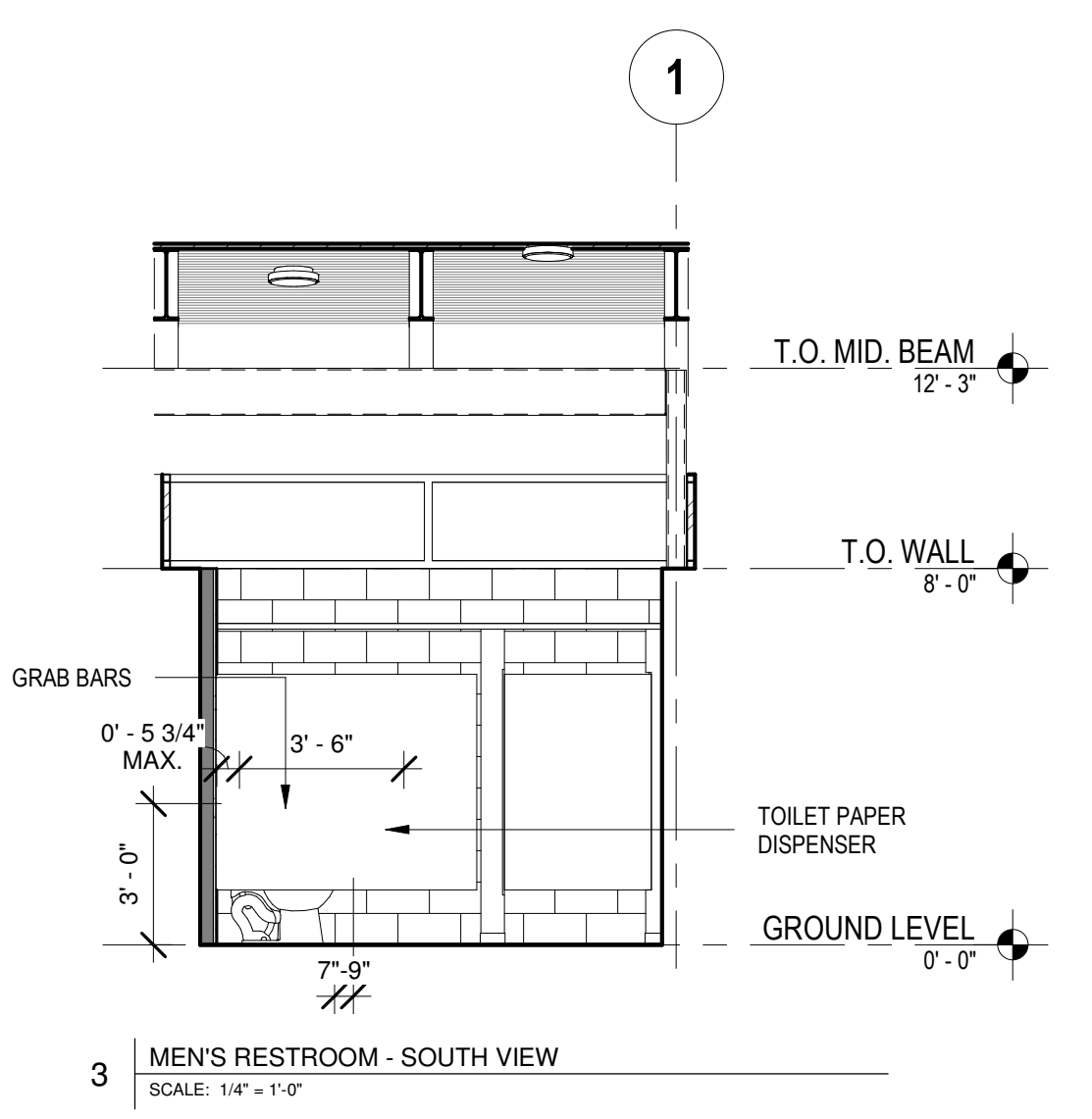
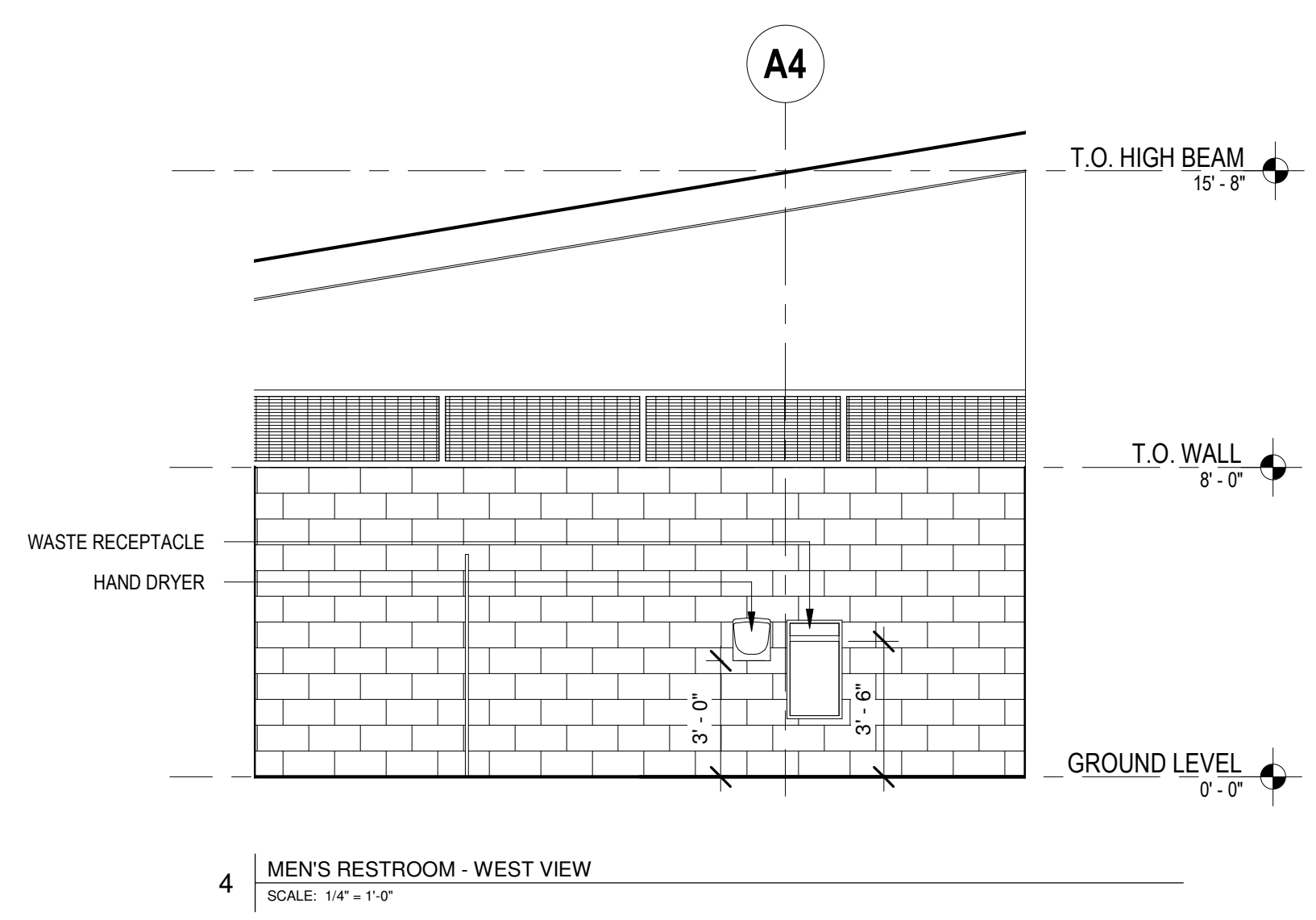
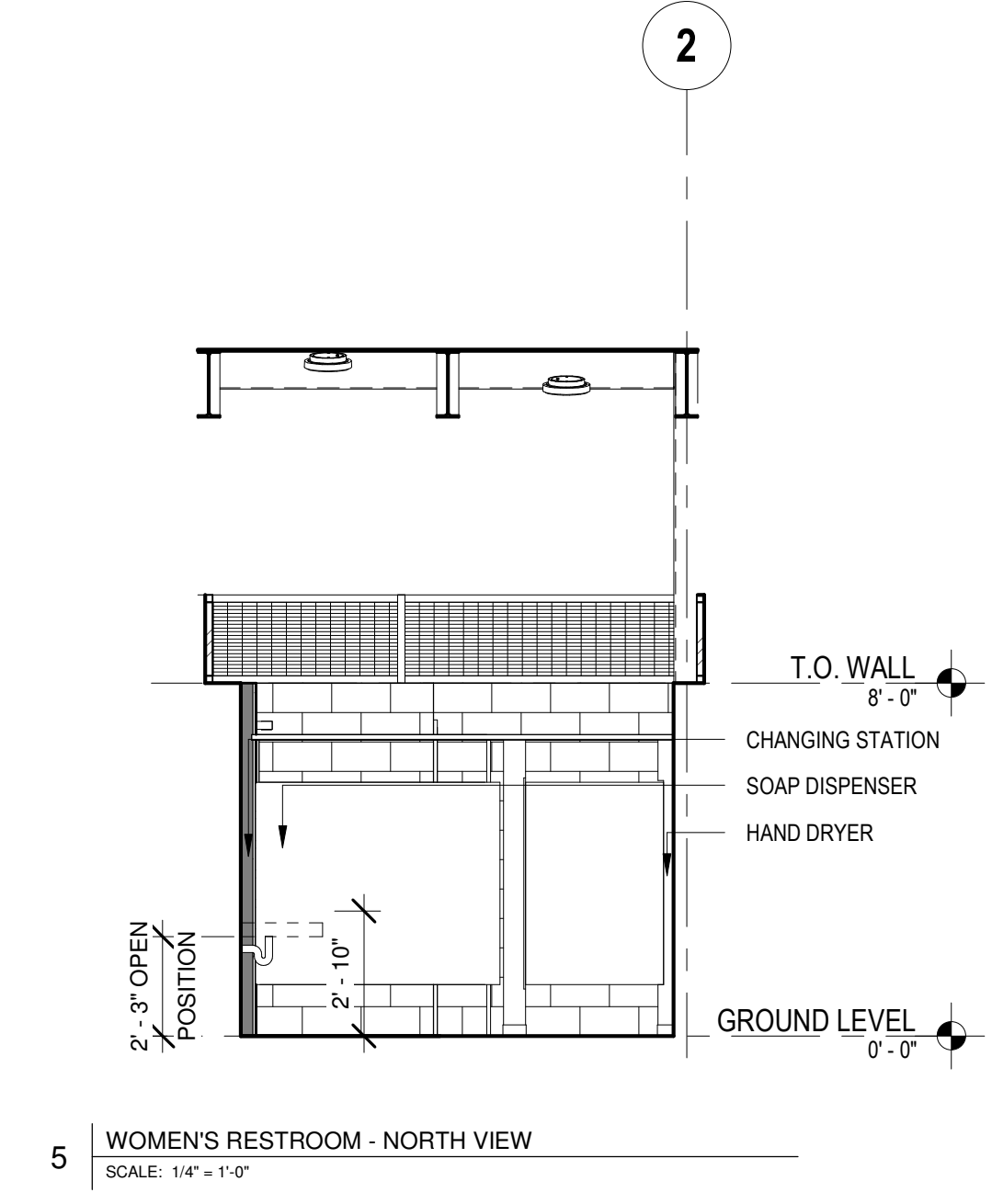
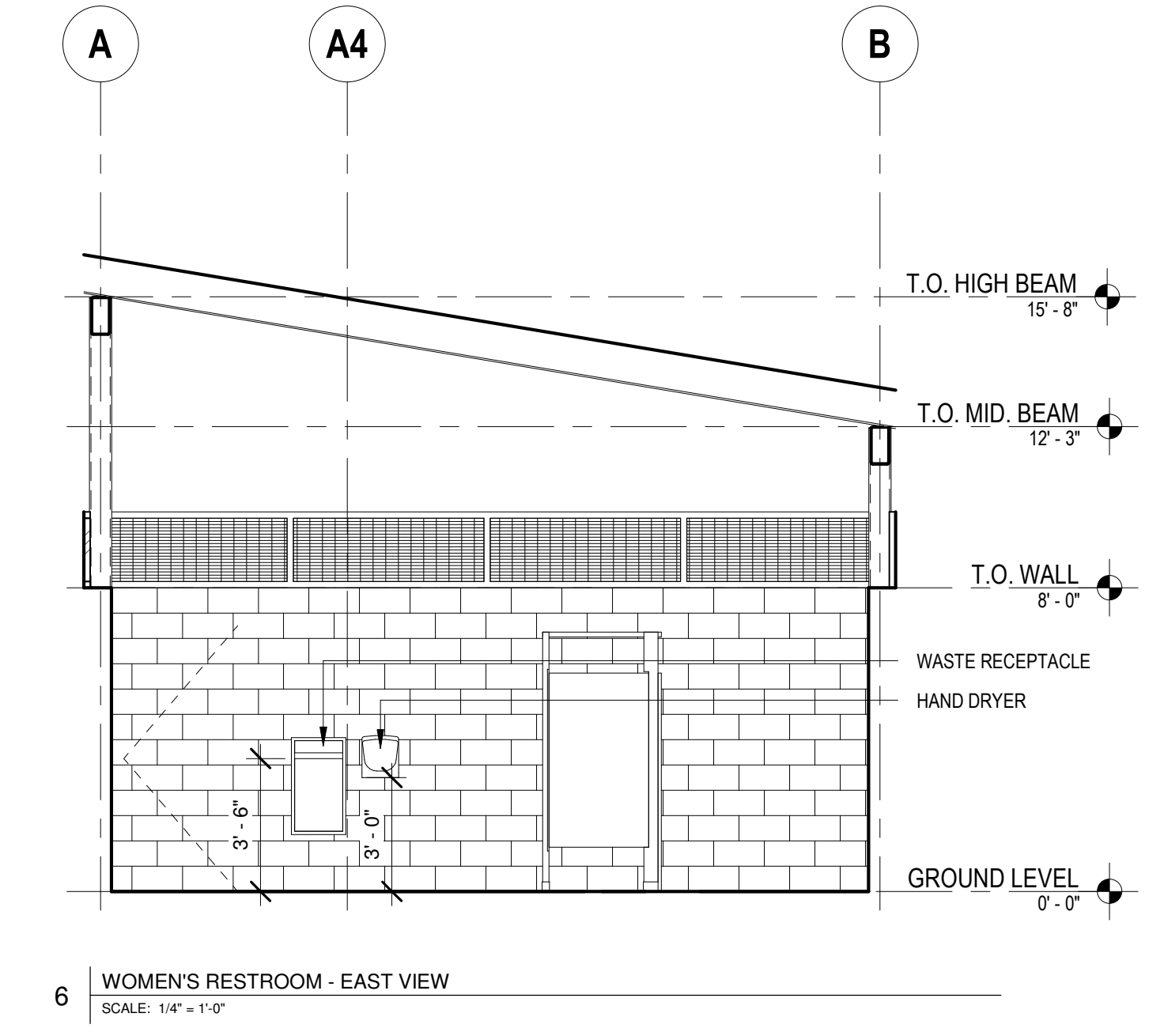
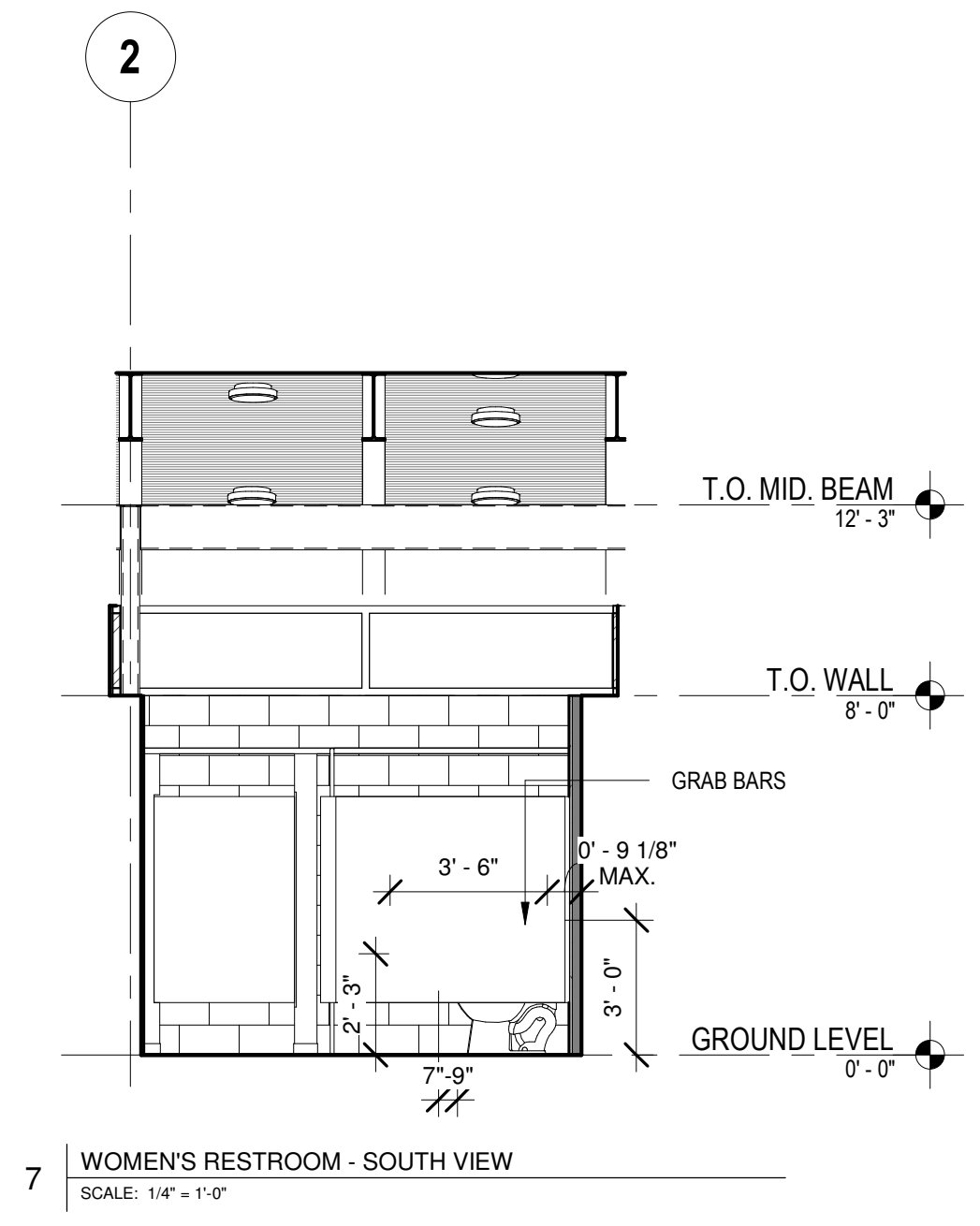
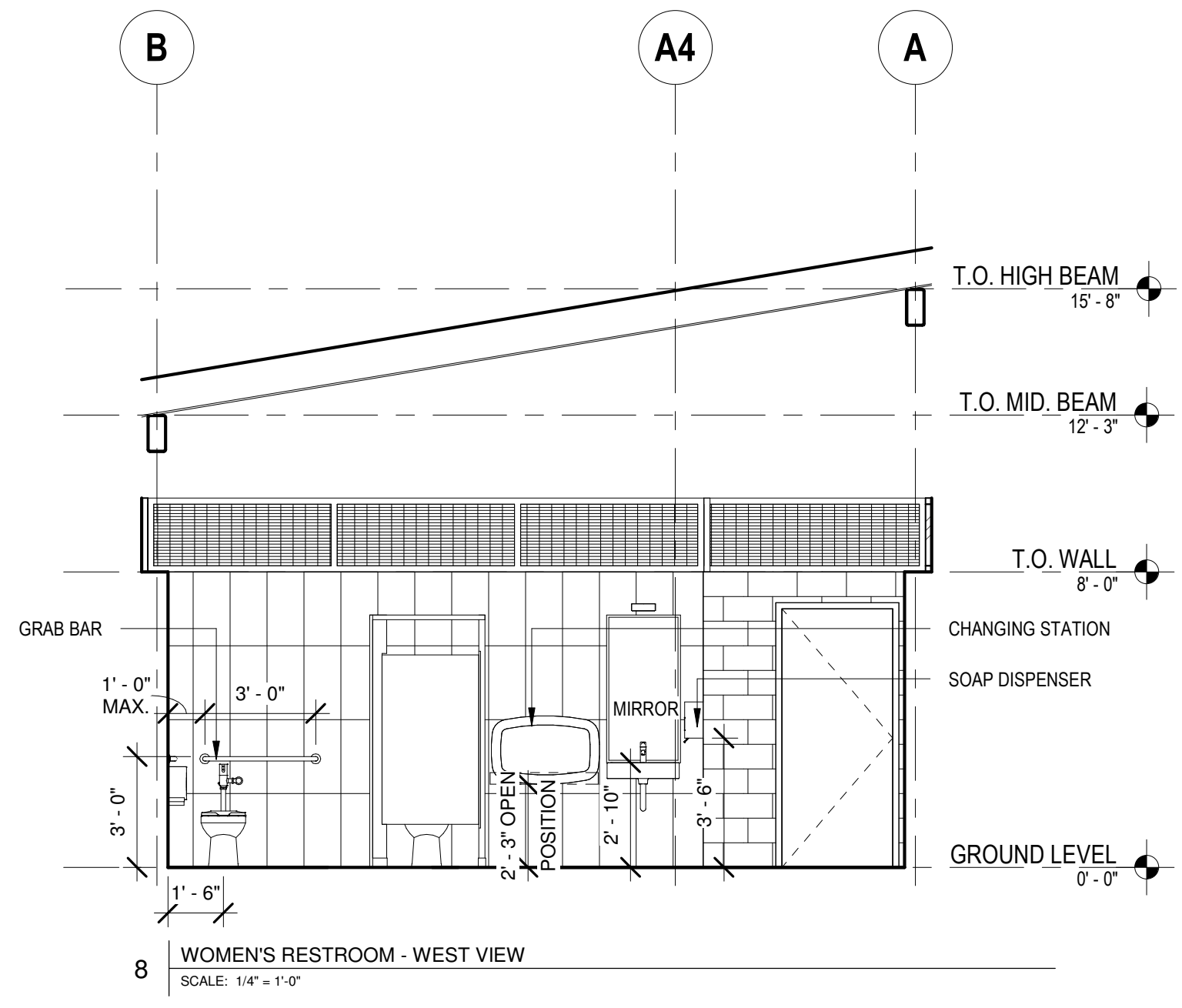
BASTROP, TEXAS  
hatch + ulland owen architects  
h+uo # #22-021  
100% CONSTRUCTION DOCUMENTATION - BID SET

ISSUE REVISIONS	DATE	NOTES
1	18 Nov 2024	ADDENDUM 1

**PHASE 1 - INTERIOR ELEVATIONS**

SHEET NUMBER  
**A-411**

This document, the ideas and design incorporated herein are and shall remain the property of h+u architects. These documents are not to be used or altered, in whole or in part, for other than the original intended use, nor are they to be assigned to any third party without written permission from h+u architects.



11/18/2024 10:56:30 AM