

OSBORN & VANE ARCHITECTS INC

July 25, 2025

ADDENDUM NO. 2

From: Osborn & Vane Architects, Inc.

VIA EMAIL

To: Bidders

Re: Outparcel 25B
Creekside Town Center
323 Creekside Crossing
New Braunfels, Texas 78130
Project No. 24051

This Addendum forms a part of the contract documents identified above. Acknowledge the receipt of this Addendum on the Bid Form. Failure to do so may subject the bidder to disqualification.

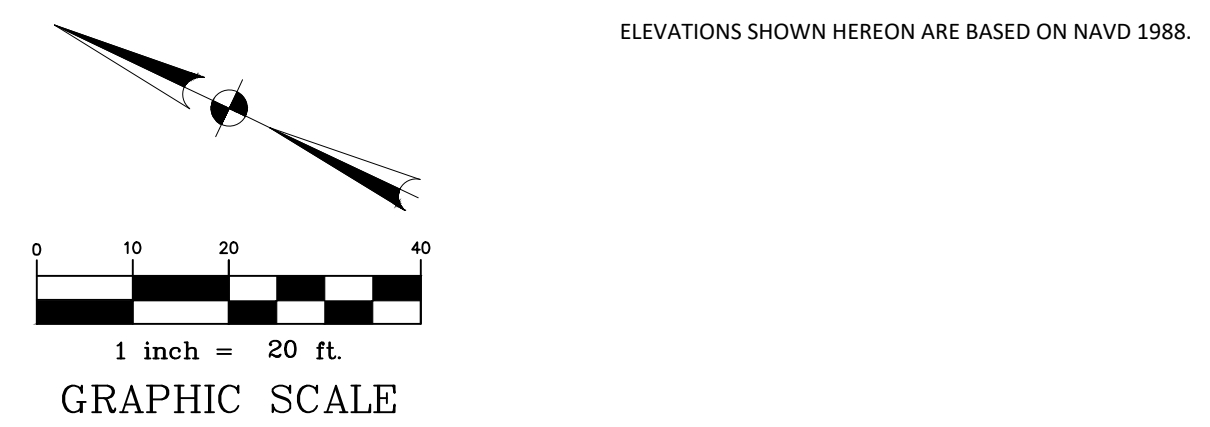
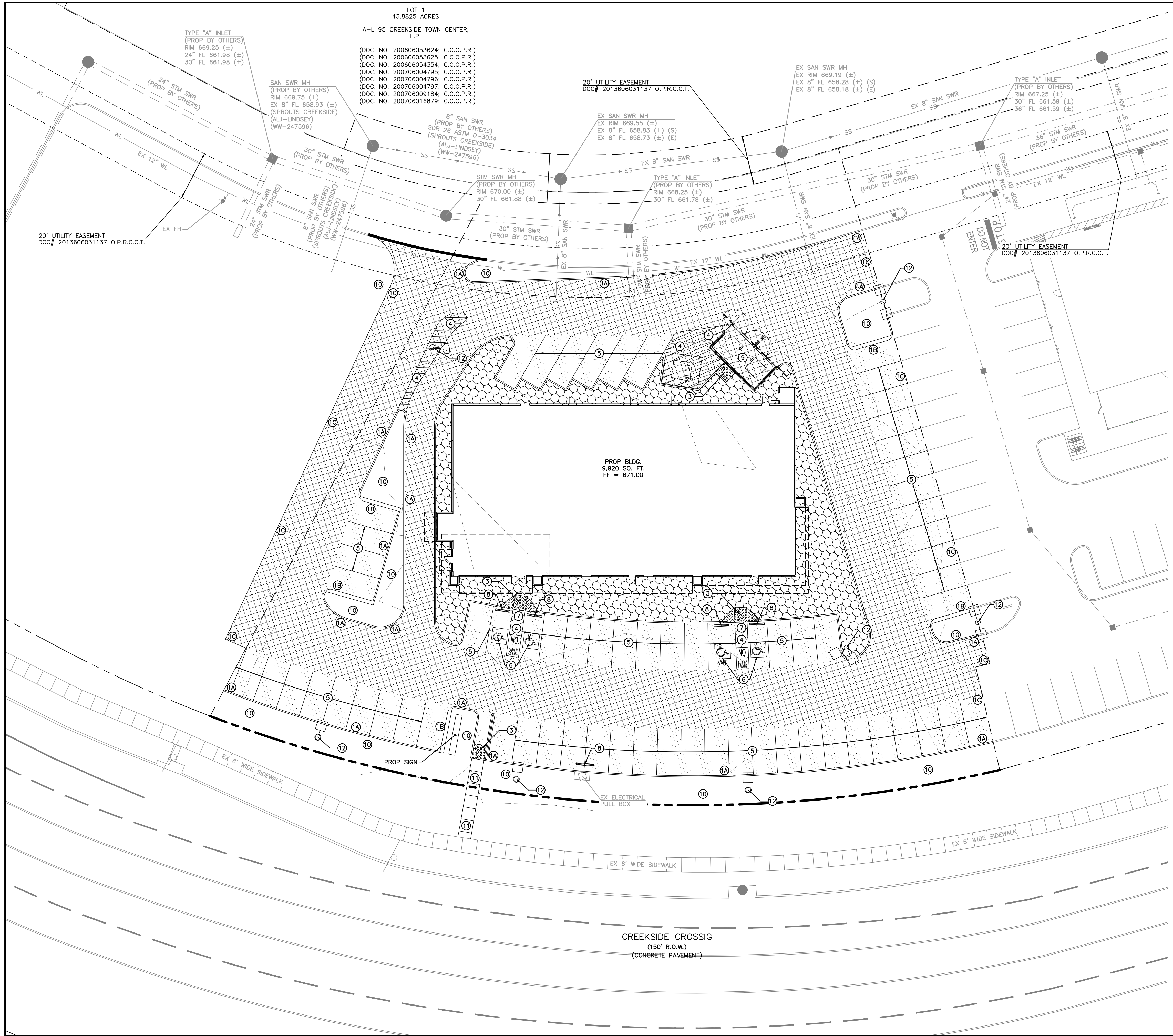
1. Paving plan has been updated per the Geotech Report. Light duty pavement is 5.5" thick and heavy-duty pavement is 6.5" thick. The minimum concrete strength is 4,000 PSI at 28 days, and the paving sections are No. 3's @ 18".
2. Building perimeter sidewalk should be a minimum of 4.5" thick and have a minimum strength of 3,500 PSI @ 28 days
3. Per Sheet A1.0, please provide a 5'-0" slab leave-out across the rear of the building
4. Per Sheet AS1.0, please provide bollards in front of the electrical pull boxes
5. The exterior face of Panel P4 will be clad in metal panels similar to Panels P2 and P3
6. Note 10 on Sheet A1.1 refers to the roof-side face of the concrete panels. Paint is not required where the rear of the parapet is metal panel.

END OF ADDENDUM NO. 2

2000 Bering Drive
Suite 410
Houston, Texas
77057

713 781 5262
713 781 5347 Fax

OSBORN & VANE ARCHITECTS inc



- ### KEYED NOTES
- (1A) PROPOSED 6" MONOLITHIC CONCRETE CURB (SEE DETAIL, SHEET C7.0)
 - (1B) PROPOSED 6" X 18" MONOLITHIC CONCRETE CURB (SEE DETAIL, SHEET C7.1)
 - (1C) PROPOSED EDGE OF PAVEMENT W/ NO CURB
 - (2) TIE PROPOSED CURB INTO EXISTING CURB
 - (3) CONSTRUCT CURB RAMP (SEE DETAIL, SHEET C7.0)
 - (4) 4" PAINTED WHITE STRIPING @ 2' O.C. @ 45°
 - (5) WHITE PARKING LOT STRIPING
 - (6) HANDICAP PARKING SYMBOL W/ SIGNAGE (SEE DETAIL, SHEET C7.0)
 - (7) HANDICAP ACCESSIBLE PARKING STALL STRIPING
 - (8) WHEEL STOP (SEE DETAIL, SHEET C7.1)
 - (9) DUMPSTER ENCLOSURE
 - (10) LANDSCAPED AREA (REF. LANDSCAPE PLANS)
 - (11) CONCRETE SIDEWALK (WIDTH PER PLANS)
 - (12) LIGHT POLE (REF. ARCHITECTURAL PLANS)
- PROPOSED 5.5" THICK LIGHT DUTY CONCRETE PAVEMENT WITH STABILIZED SUBGRADE (SEE NOTE 2 BELOW)
 - PROPOSED 6.5" THICK HEAVY DUTY CONCRETE PAVEMENT WITH STABILIZED SUBGRADE (SEE NOTE 2 BELOW)
 - PROPOSED BUILDING PERIMETER SIDEWALK (REF. ARCHITECTURAL PLANS FOR SURFACE FINISH, SEE GRADING ON SHEET C4.0)
 - PROPOSED IRRIGATION SLEEVE (SEE NOTE 3)
 - CONCRETE TO CONCRETE PAVEMENT CONNECTION (INCLUDING 2" SAWCUT, EXISTING PAVEMENT REMOVAL, EXISTING CURB REMOVAL, DOWEL INTO EXISTING PAVEMENT, CONCRETE PAVEMENT HEADER AND SEALED JOINTS)
 - 100 EX. MAJOR CONTOUR
 - 99 EX. MINOR CONTOUR

- ### GENERAL NOTES
1. REFER TO SITE ELECTRICAL PLAN FOR PROPOSED SITE LIGHTING LAYOUT.
 2. PAVEMENT AND SUBGRADE THICKNESS INCLUDED ON THIS SHEET FOR REFERENCE ONLY. REFER TO GEOTECHNICAL REPORT PREPARED BY TERRACON CONSULTANTS INC., DATED AUGUST 13, 2024 (PROJECT NO. 90245230).
 3. REFER TO IRRIGATION PLAN FOR EXACT LOCATION, SIZE, AND QUANTITY OF IRRIGATION SLEEVES.
 4. MAXIMUM CONTROL JOINT SPACING TO BE 15-FT AND EXPANSION JOINT SPACING TO BE 60-FT.
 5. CONCRETE SHALL HAVE A MINIMUM COMPRESSIVE STRENGTH OF 4,000 PSI AT 28 DAYS AND ALL STEEL TO BE GRADE 60, UNLESS OTHERWISE SPECIFIED IN GEOTECHNICAL REPORT.
 6. PAVING CONTRACTOR TO CONFIRM AND/OR ADJUST ALL EXISTING AND PROPOSED UTILITIES AND APPURTENANCES TO FINISHED GRADE PRIOR TO PLACEMENT OF ANY PAVING.
- MULTIPLE EXISTING PUBLIC AND PRIVATE UTILITY LINES EXIST ON THIS SITE. THE UTILITY LINES SHOWN ON THESE DRAWINGS REFLECT INFORMATION OBTAINED FROM RECORD DRAWINGS AND MAY NOT INCLUDE ALL EXISTING UTILITIES. CONTRACTOR IS TO USE EXTREME CAUTION DURING ALL CONSTRUCTION ACTIVITIES AND IS SOLELY RESPONSIBLE FOR DAMAGE TO EXISTING FACILITIES.

CALL BEFORE YOU DIG
 TEXAS ONE CALL PARTICIPANTS REQUEST
 72 HOURS NOTICE BEFORE YOU DIG, DRILL
 OR BLAST - STOP CALL
 TEXAS ONE CALL SYSTEM
 1-800-344-8377
 IN HOUSTON
 (713)-223-4567

 Civil Engineers 1885 N. Loop West, Suite 200 Houston, TX 77057 FRN F-11506	 09 JULY 2025
ALJ PROJECT NO. 02824CV154	DATE: JULY 2025 SCALE: 1:20 DRAWN BY: ZAR CHECKED BY: BTH
<h2 style="margin: 0;">PAVING PLAN</h2>	
<h3 style="margin: 0;">CREEKSID TOWN CENTER TRACT 25'B</h3> <p style="margin: 0;">CITY OF NEW BRAUNFELS, TEXAS</p>	
SHEET <h1 style="margin: 0;">C5.0</h1>	