

OSBORN & VANE ARCHITECTS INC

August 21, 2025

ADDENDUM NO. 1

From: Osborn & Vane Architects, Inc.

VIA EMAIL

To: Bidders

Re: Tract 30
Stone Hill Town Center
18708 Limestone Commercial Drive
Pflugerville, Texas 78660
Project No. 24071

This Addendum forms a part of the contract documents identified above. Acknowledge the receipt of this Addendum on the Bid Form. Failure to do so may subject the bidder to disqualification.

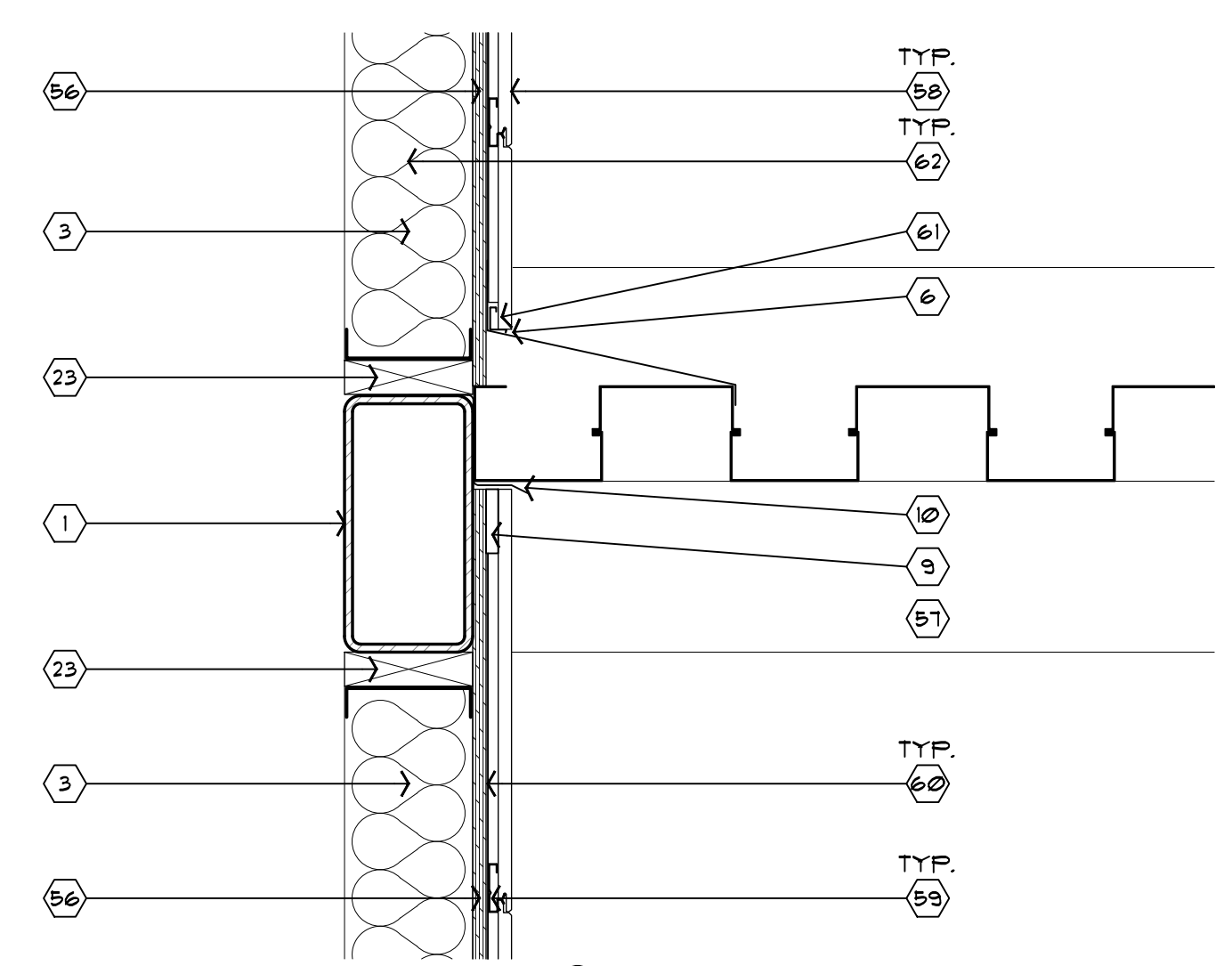
1. The current rate for sub-contractors to utilize Textura is .22% plus taxes.
2. Alternate Nos. 6 and 7 have been updated on the attached bid form.
3. The size of the scuppers and collector boxes have been revised on Sheet A5.0

END OF ADDENDUM NO. 1

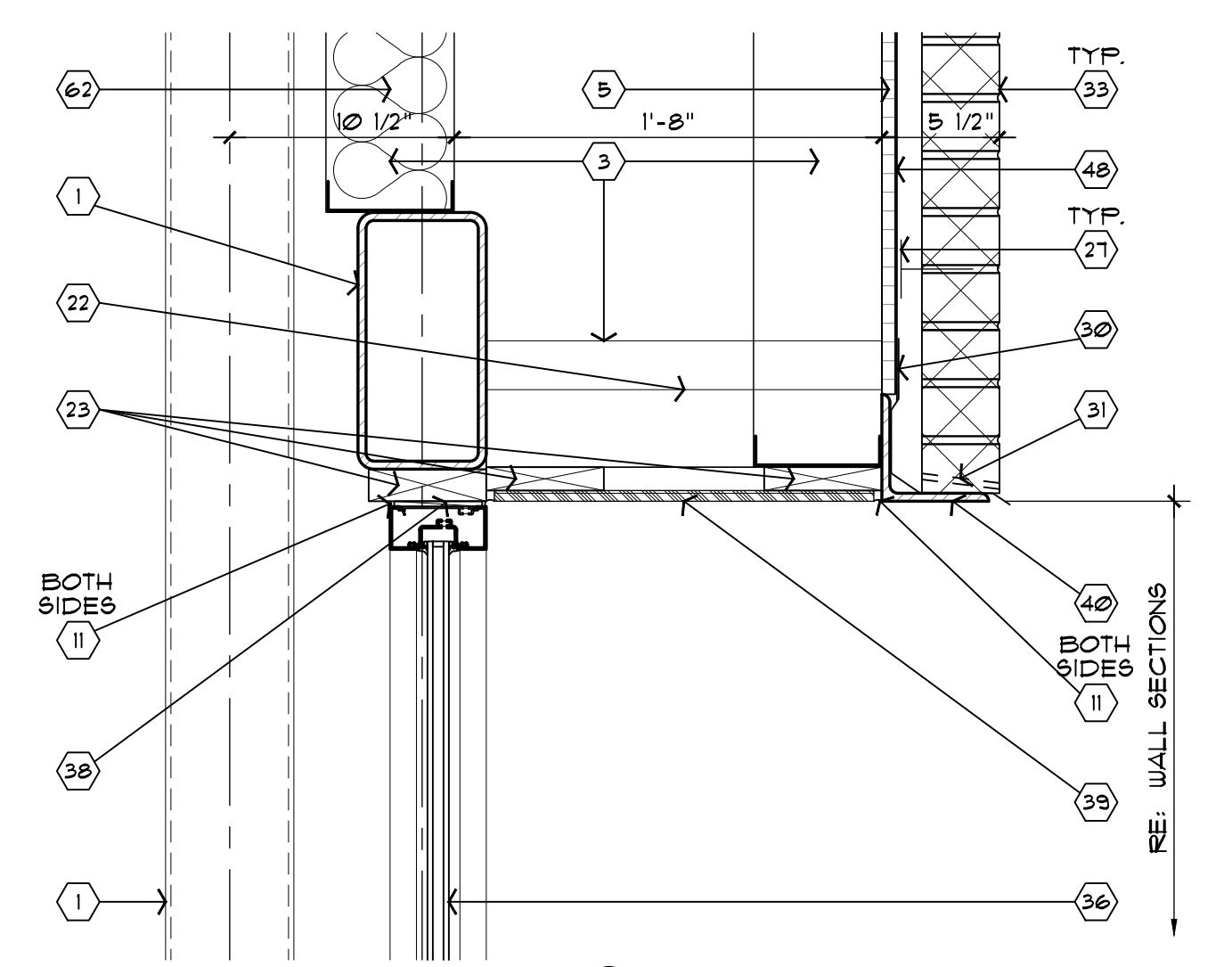
2000 Bering Drive
Suite 410
Houston, Texas
77057

713 781 5262
713 781 5347 Fax

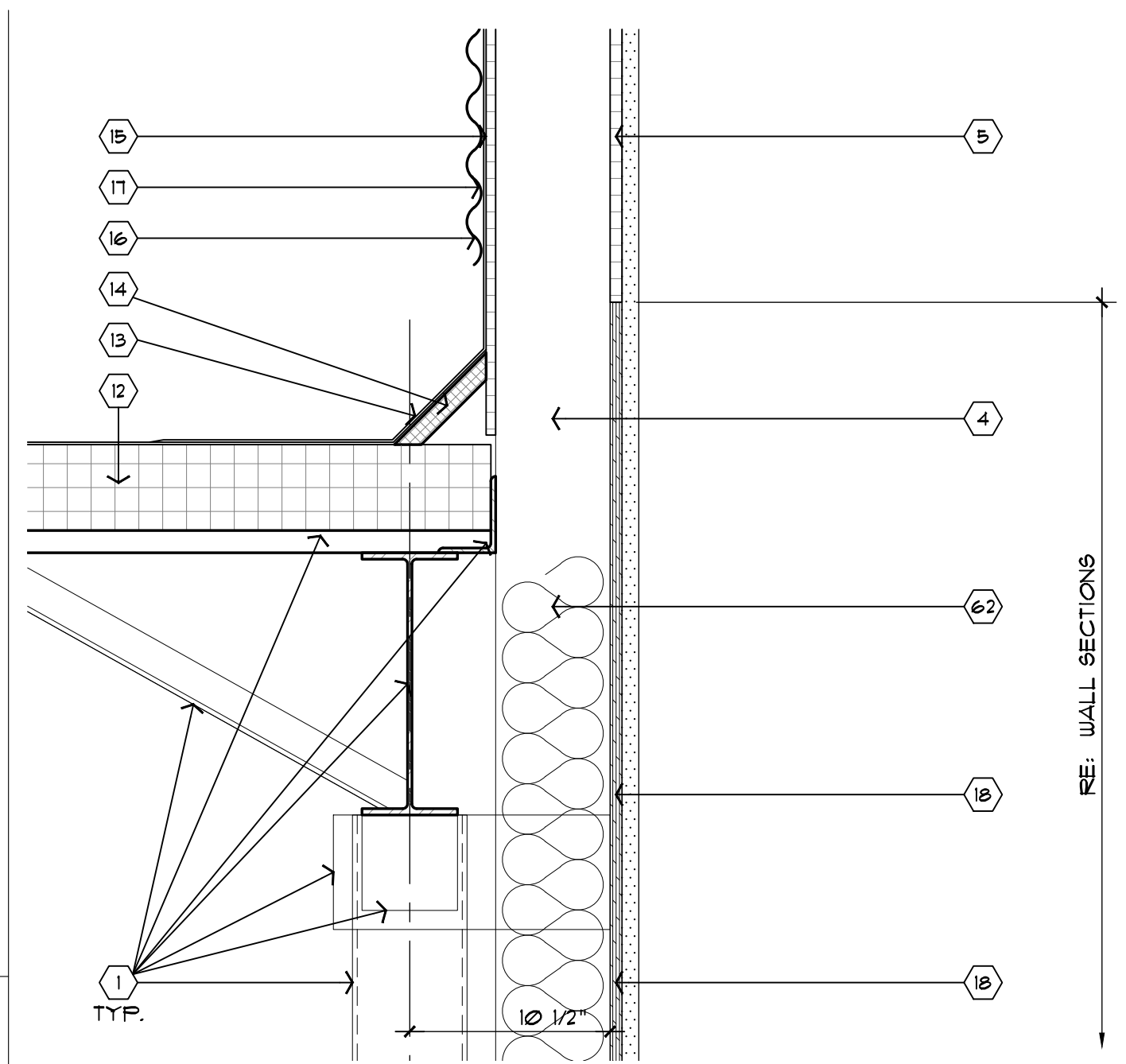
- NOTES TO SHEET: (1)
- RE: STRUCTURAL DRAWINGS.
 - 6'-0" WIDE CONCRETE LEAVE-OUT AT SLAB.
 - RE: STRUCTURAL DRAWINGS.
 - 6" METAL STUD FRAMING. RE: STRUCTURAL DRAWINGS.
 - E.I.F.S. (EXTERIOR INSULATED FINISH SYSTEM) COATING ON 7/8" CEMENT PLASTER WITH SELF-FURRING GALV. METAL LATH OVER MOISTURE BARRIER. RE: SPECIFICATIONS.
 - 5/8" DENS GLASS SHEATHING.
 - 1/4" CLEARANCE FROM EDGE OF PANEL TO FLASHING.
 - 1/2" ASPHALT EXPANSION JOINT WITH PAVEMENT SEALANT.
 - REINFORCED CONCRETE WALK.
 - NICHHA SPACER.
 - RE: SPECIFICATIONS.
 - 5/8" DENS GLASS SHEATHING.
 - SCHEDULED ROOF ON CONT. R-25 INSULATION.
 - ROOF FLASHING SYSTEM.
 - 4" FIBER CANT.
 - 1/2" DENS GLASS SHEATHING.
 - PAINTED 24 GA. GALV. CORRUGATED METAL. LAP JOINTS A MINIMUM OF 6" OVERLAP IN BOTH VERTICAL AND HORIZONTAL.
 - WRAP FLASHING SYSTEM OVER TOP OF WOOD BLOCKING AND ATTACH.
 - 5/8" EXTERIOR-GRADE NON-COMBUSTIBLE PLYWOOD IN LIEU OF DENS GLASS SHEATHING. RE: EXTERIOR ELEVATIONS FOR LOCATIONS.
 - PAINTED ZINC PLASTER CASING BEAD.
 - BACKER ROD AND CONTINUOUS SEALANT. COLOR TO MATCH ADJACENT CEMENT PLASTER.
 - E.I.F.S. CORNICE.
 - 3/5" METAL STUD FRAMING. RE: STRUCTURAL DRAWINGS.
 - NON-COMBUSTIBLE TREATED WOOD BLOCKING.
 - PRE-FINISHED 26 GA. METAL CAP COPING OVER FLASHING MEMBRANE WITH CONT. CLEATS BOTH SIDES WITH NO EXPOSED FASTENERS.
 - CONCRETE SLAB. RE: STRUCTURAL DRAWINGS.
 - FILL CAVITY WITH GROUT.
 - GALV. ADJUSTABLE MASONRY TIES AT MINIMUM ONE TIE PER 2 SQUARE FEET OF WALL SURFACE. HOHMANN & BERNARD H8-21-HS. COORDINATE DEPTH OF TIES REQUIRED FOR PROPER EMBEDMENT.
 - 4" C.M.U. BLOCK.
 - THIN-SET MANUFACTURED STONE VENEER WAJSCOT ON MORTAR SETTING BED WITH MORTAR JOINTS. USE PRE-CUT CORNER PIECES AT ALL CORNER LOCATIONS.
 - THRU-WALL FLASHING.
 - WEEP HOLES AT 24" O.C. MAX.
 - CAST STONE AS SCHEDULED. ATTACH USING MECHANICAL FASTENERS AS SPECIFIED.
 - MODULAR BRICK AS SCHEDULED.
 - RE: CIVIL DRAWINGS.
 - REINFORCED CONCRETE CURB. RE: CIVIL DRAWINGS.
 - ALUMINUM AND GLASS STOREFRONT SYSTEM.
 - SILL FLASHING MEMBER ON MASTIC BED.
 - SHIM AS REQUIRED.
 - 1/2" DENS GLASS SOFFIT WITH ACRYLIC COATING FROM E.I.F.S. (EXTERIOR INSULATED FINISH SYSTEM) SYSTEM. PAINTED "P-2" (SEE EXTERIOR FINISH SCHEDULE SHEET A3.1).
 - PAINTED STEEL LINTEL. PAINT TO MATCH ADJACENT SOFFIT. RE: STRUCTURAL DRAWINGS.
 - 1/2" THICK (MIN.) E.I.F.S.
 - 24 GA. METAL FLASHING.
 - METAL FRAMING. RE: STRUCTURAL DRAWINGS.
 - PRE-FINISHED METAL STANDING SEAM ROOF ON 30# FELT.
 - TREATED 2 X 6 TONGUE & GROOVE DECKING. RE: STRUCTURAL DRAWINGS.
 - HARDI BOARD SOFFIT. RE: SPECIFICATIONS.
 - 2X #1 PINE SLEEPER. STAIN TO MATCH HARDI BOARD SOFFIT.
 - WEATHER-RESISTANT BARRIER.
 - PRE-FINISHED 24 GA. GALV. 6" X 6" DOWNSPOUT.
 - PRE-FINISHED 2" WIDE, 25 GA. GALV. DOWNSPOUT STRAP.
 - PRE-FINISHED 26 GA. GALV. COLLECTOR HEAD.
 - DASHED LINE INDICATES TOP OF ROOF LINE.
 - PRE-FINISHED 25 GA. GALV. METAL SCUPPER.
 - PRE-FINISHED 25 GA. GALV. METAL OVERFLOW SCUPPER.
 - PAINTED 24 GA. GALV. SHEET METAL.
 - 5/8" EXTERIOR-GRADE NON-COMBUSTIBLE PLYWOOD.
 - PRE-MANUFACTURED ALUMINUM CANOPY.
 - NICHHA PANELS. RE: SPECIFICATIONS.
 - NICHHA ULTIMATE CLIP.
 - WEATHER-RESISTANT BARRIER.
 - NICHHA VERTICAL STARTER TRACK WITH ESSENTIAL STARTER FLASHING.
 - R-19 INSULATION IN STUD SPACE FROM FINISH FLOOR OR ABOVE STOREFRONT TO ROOF DECK.



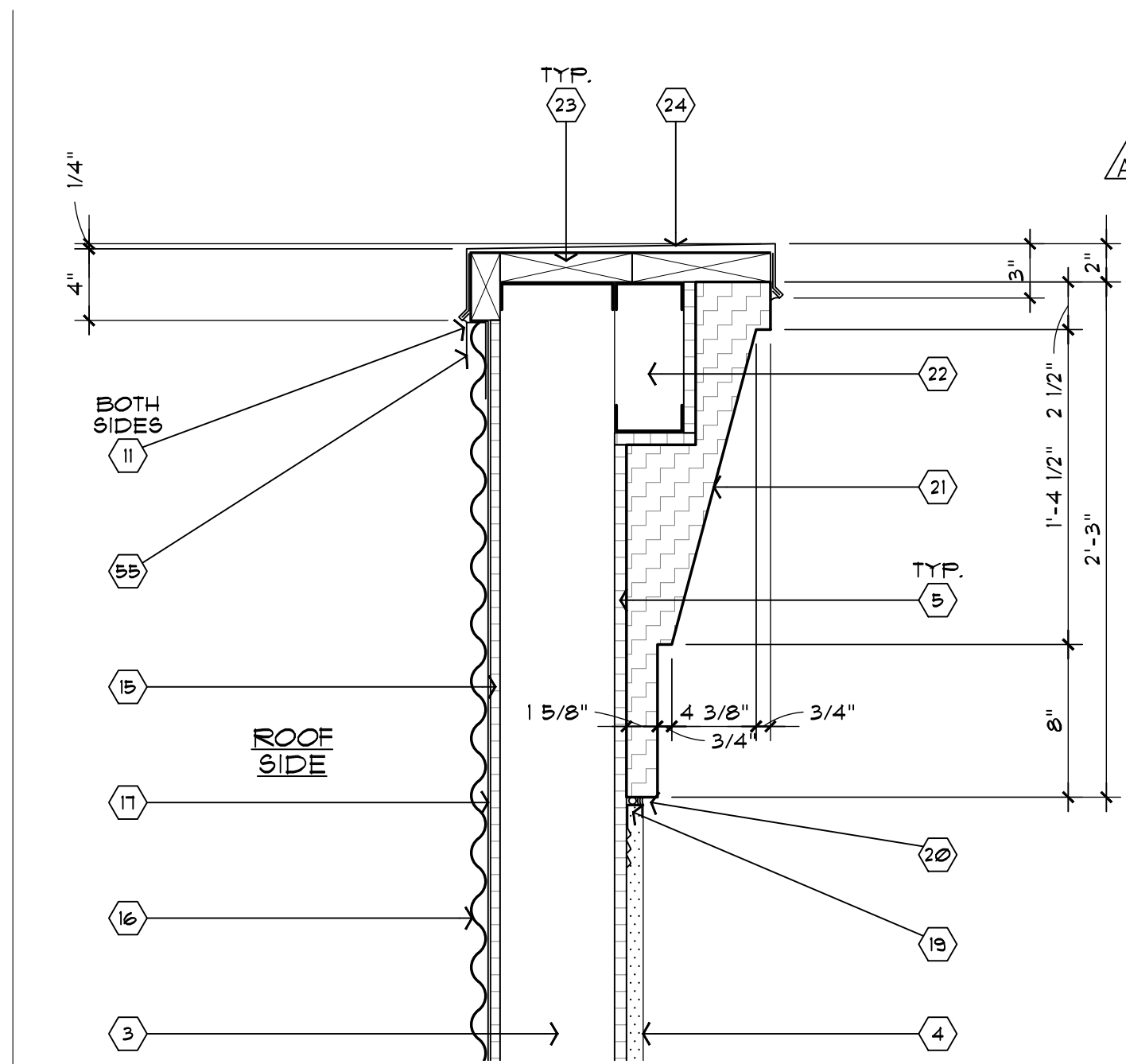
12 SECTION
SCALE: 1 1/2" = 1'-0"



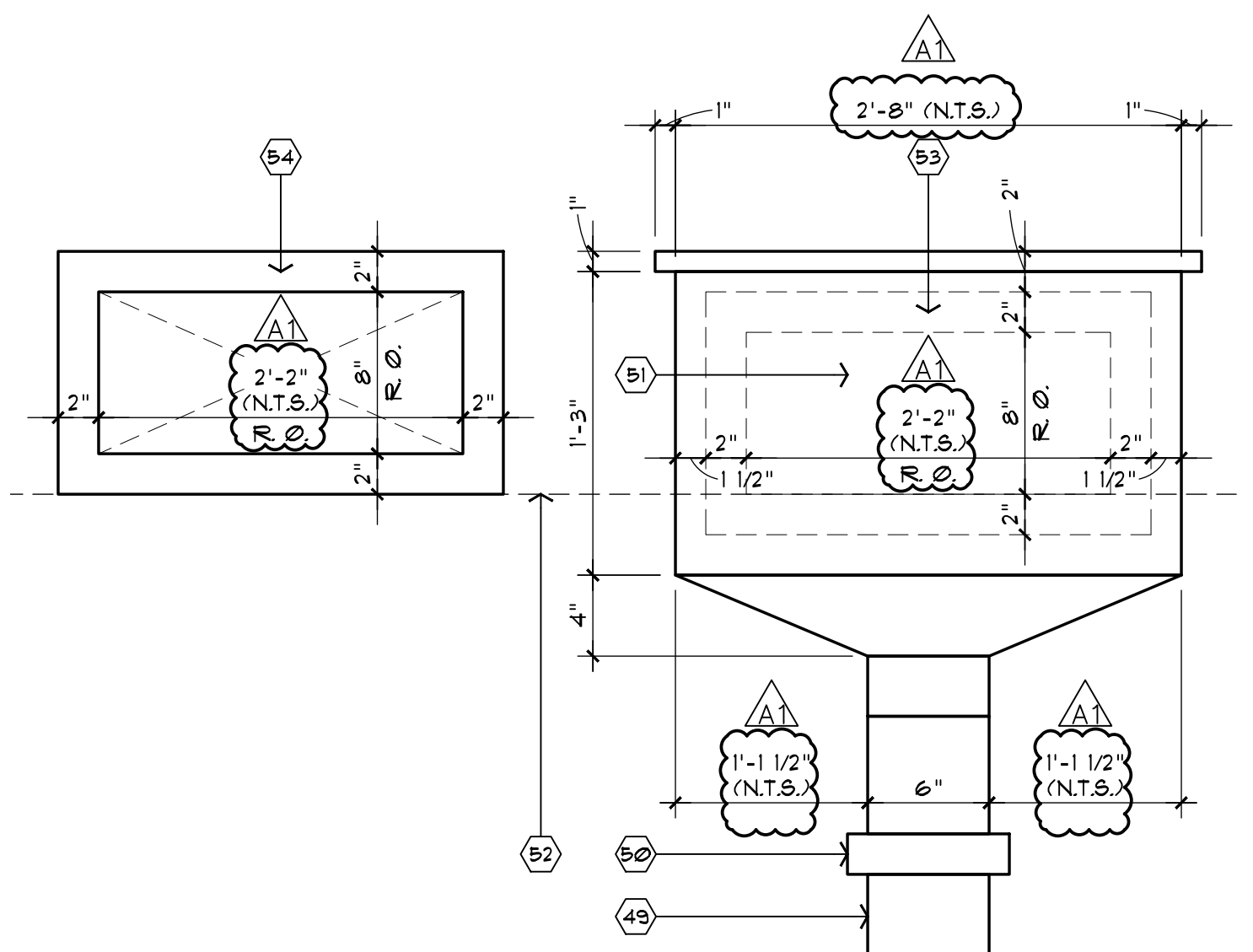
09 SECTION
SCALE: 1 1/2" = 1'-0"



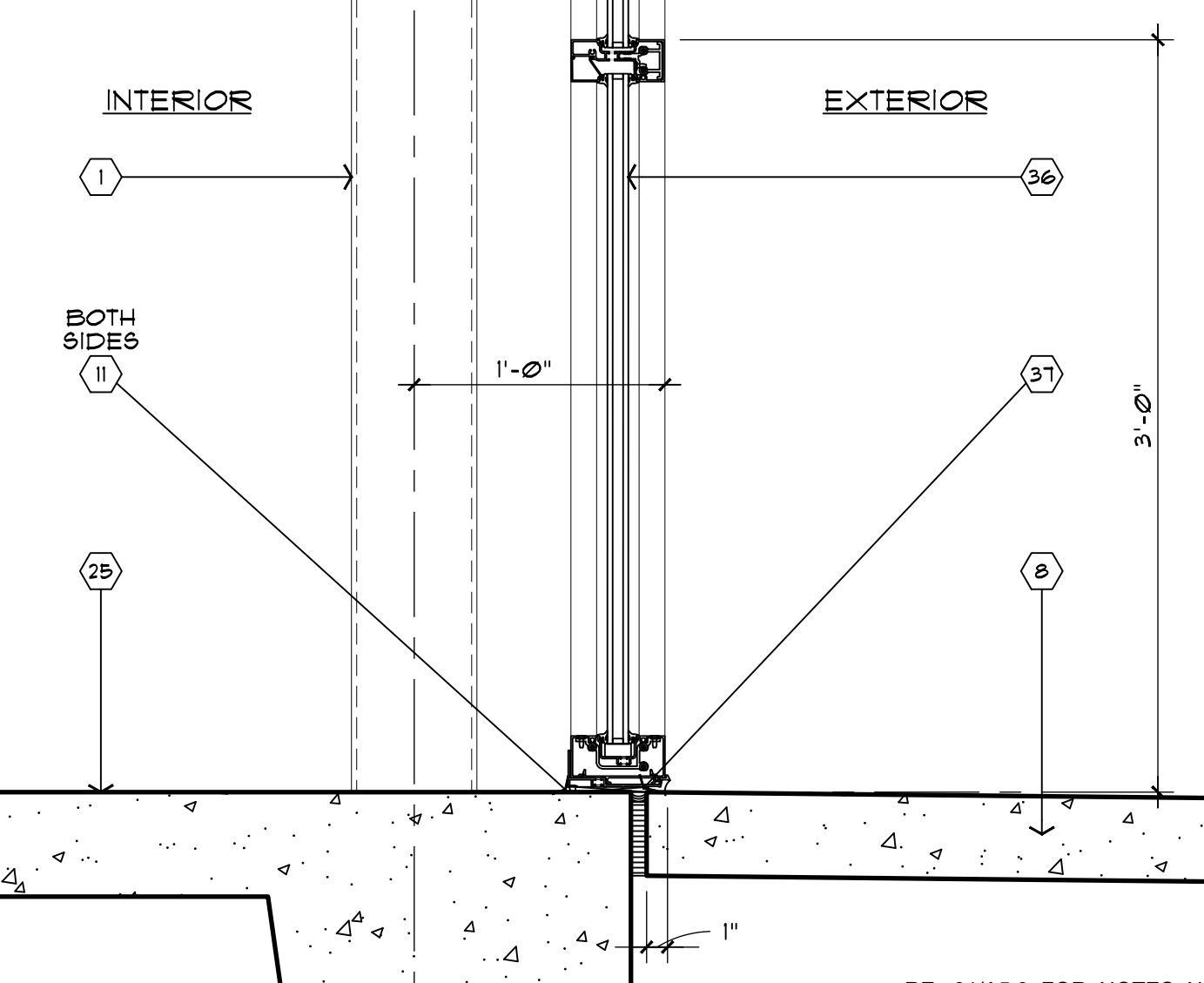
06 SECTION
SCALE: 1 1/2" = 1'-0"



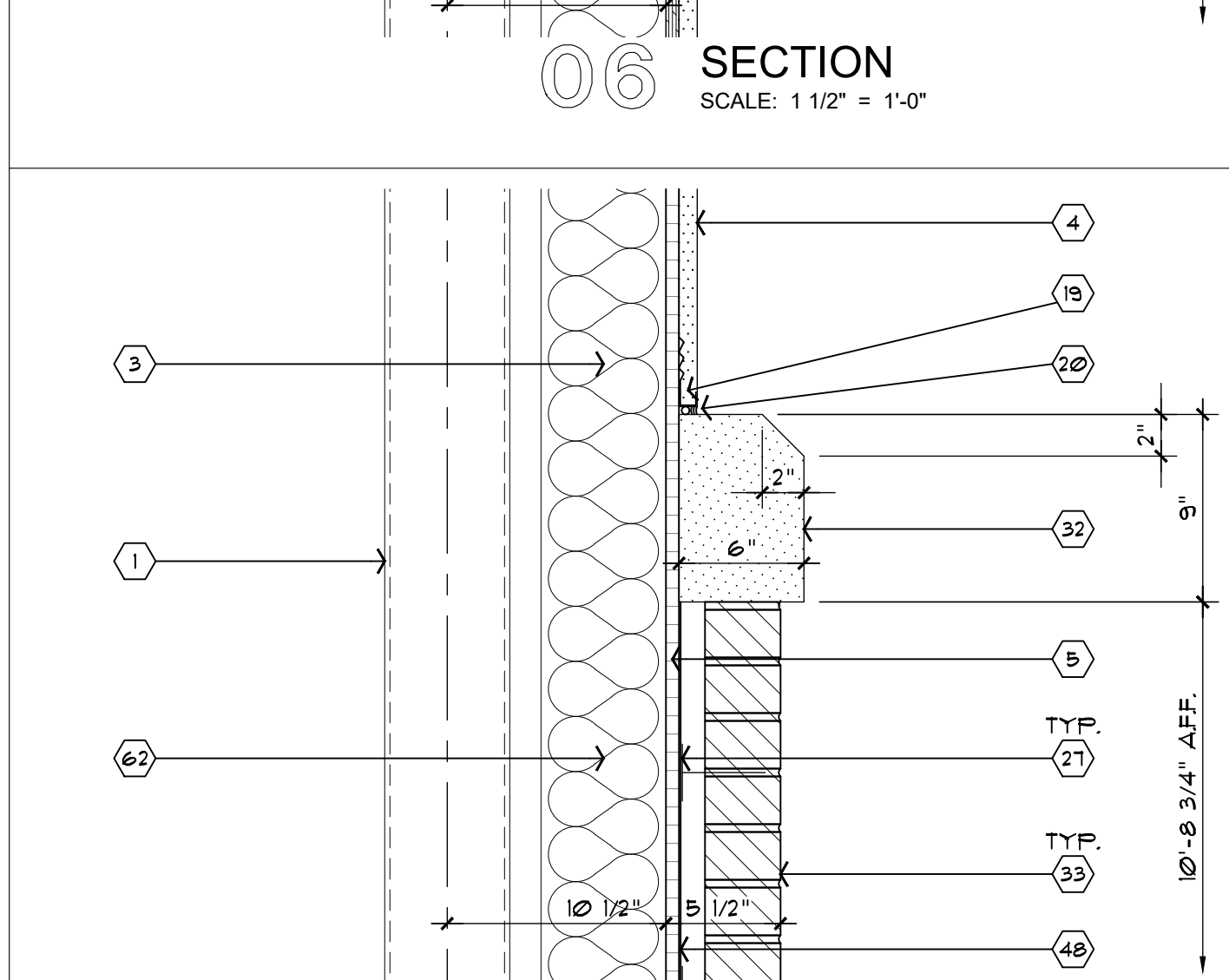
03 SECTION
SCALE: 1 1/2" = 1'-0"



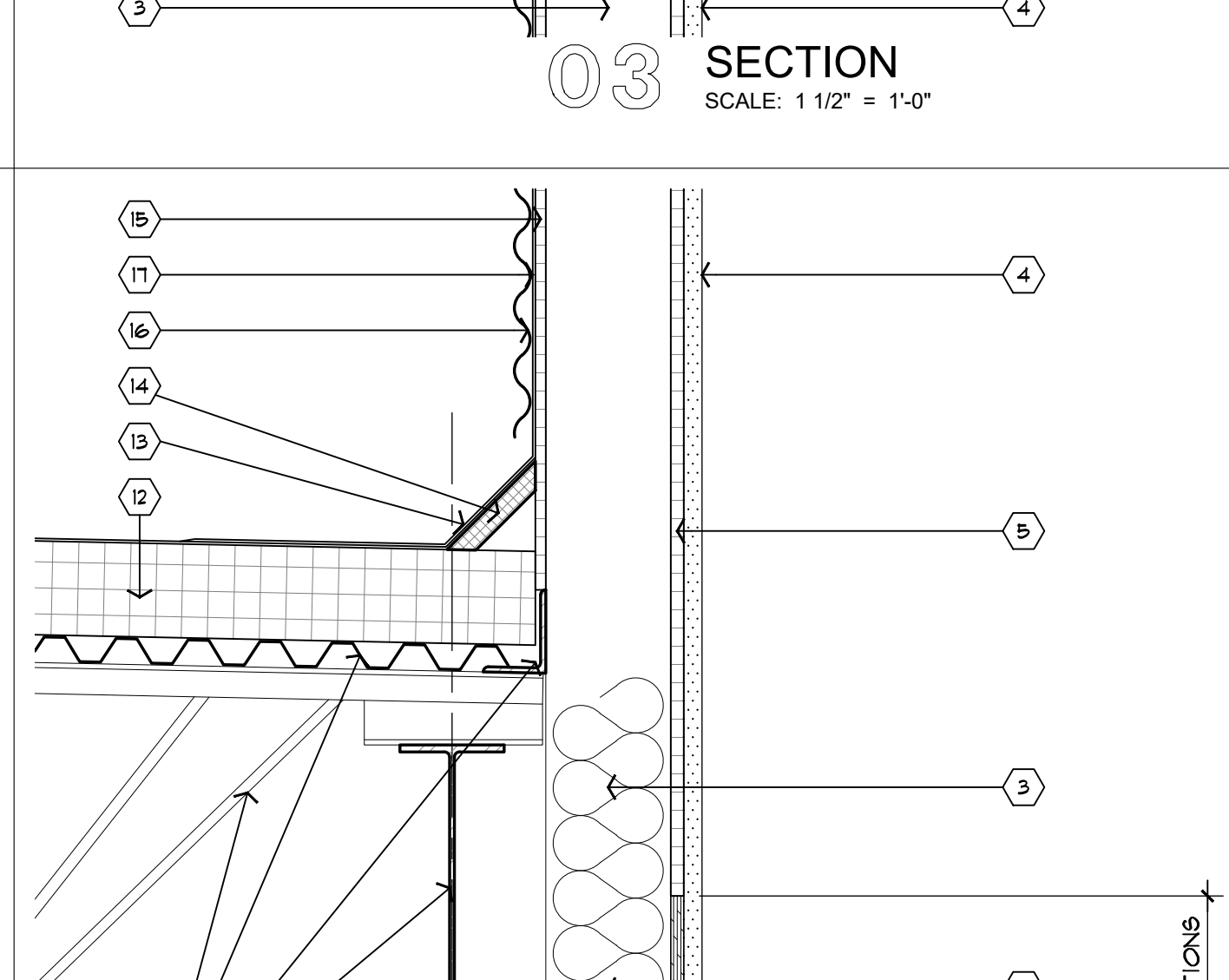
11 SECTION
SCALE: 1 1/2" = 1'-0"



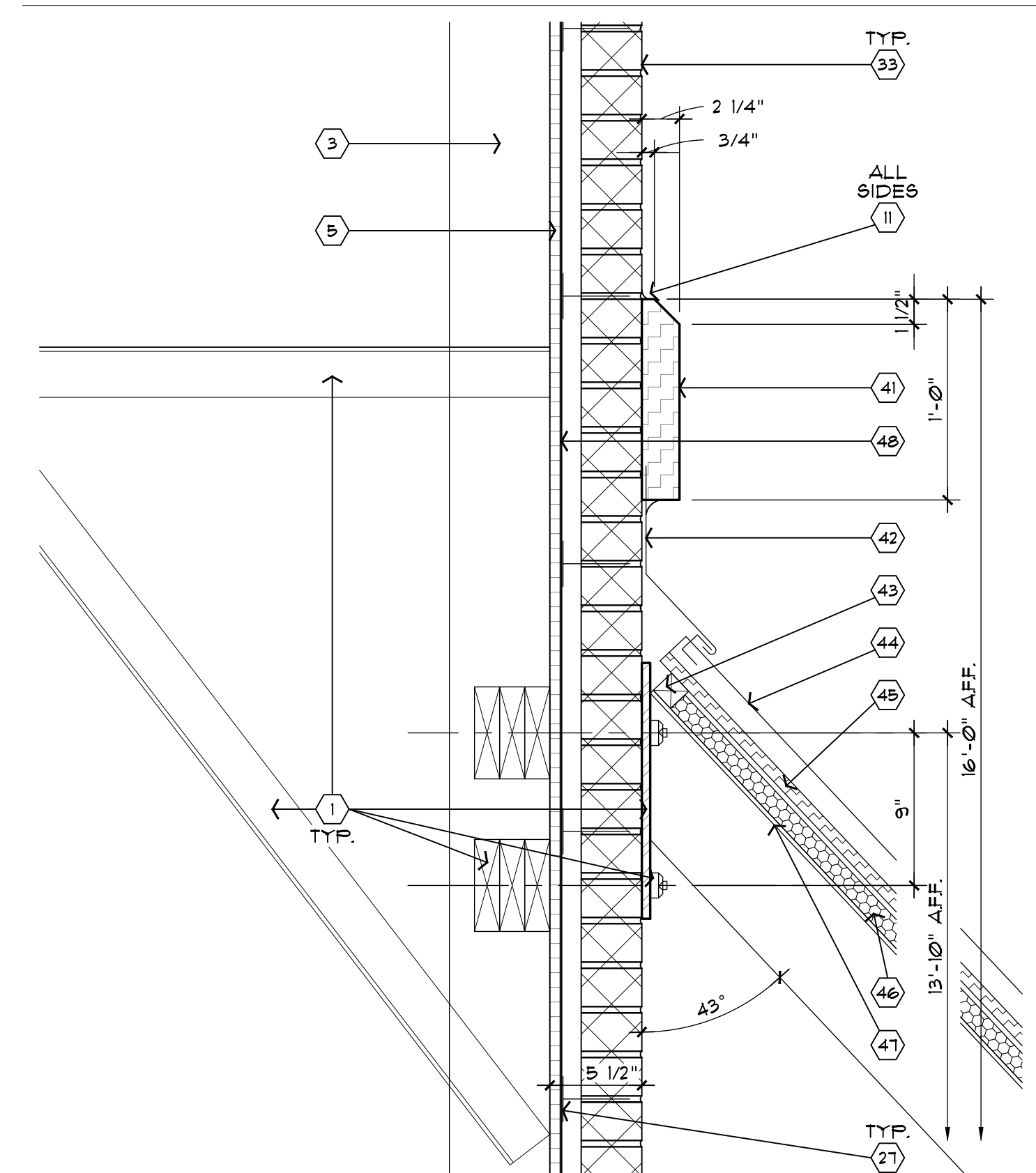
08 SECTION
SCALE: 1 1/2" = 1'-0"



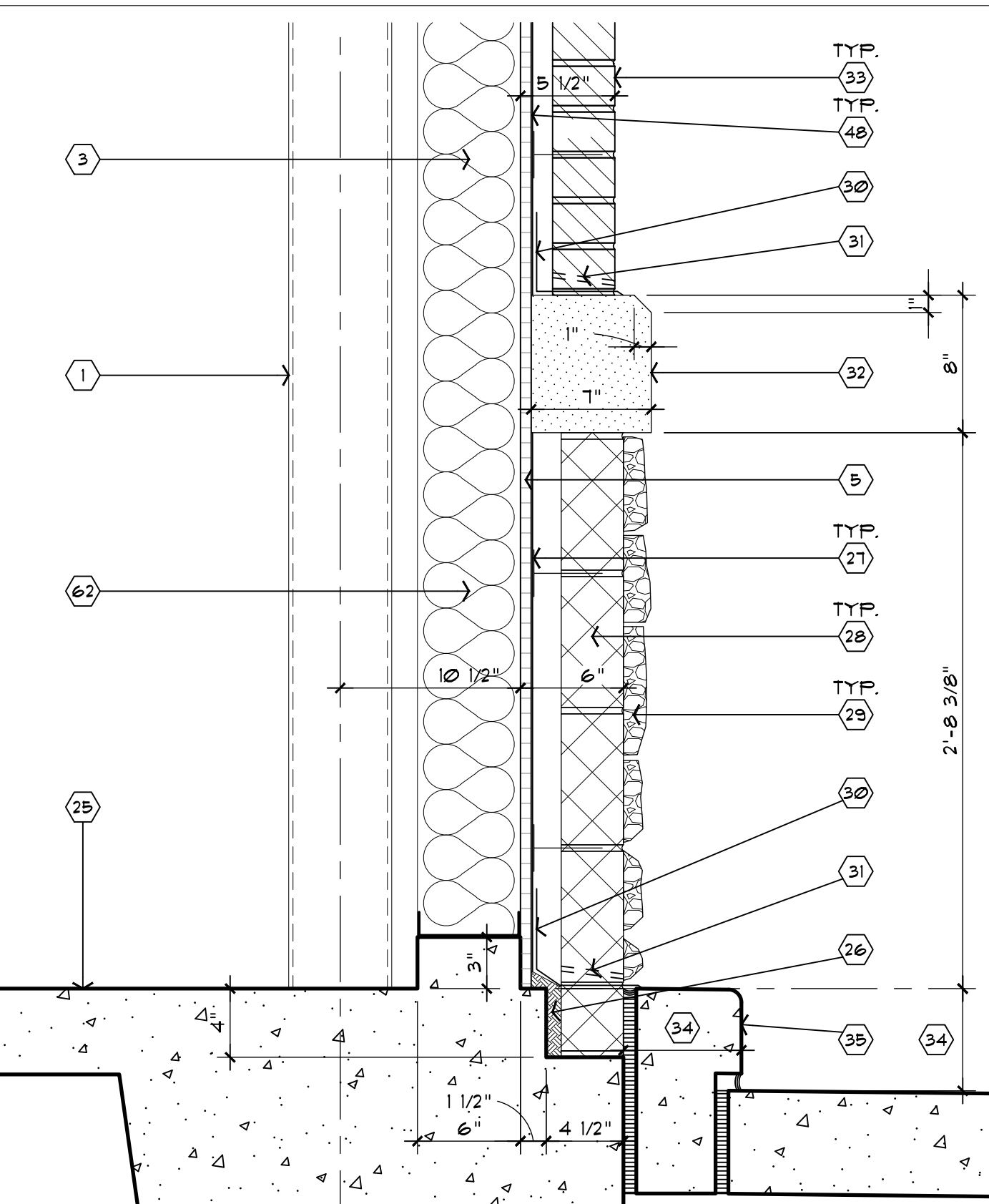
05 SECTION
SCALE: 1 1/2" = 1'-0"



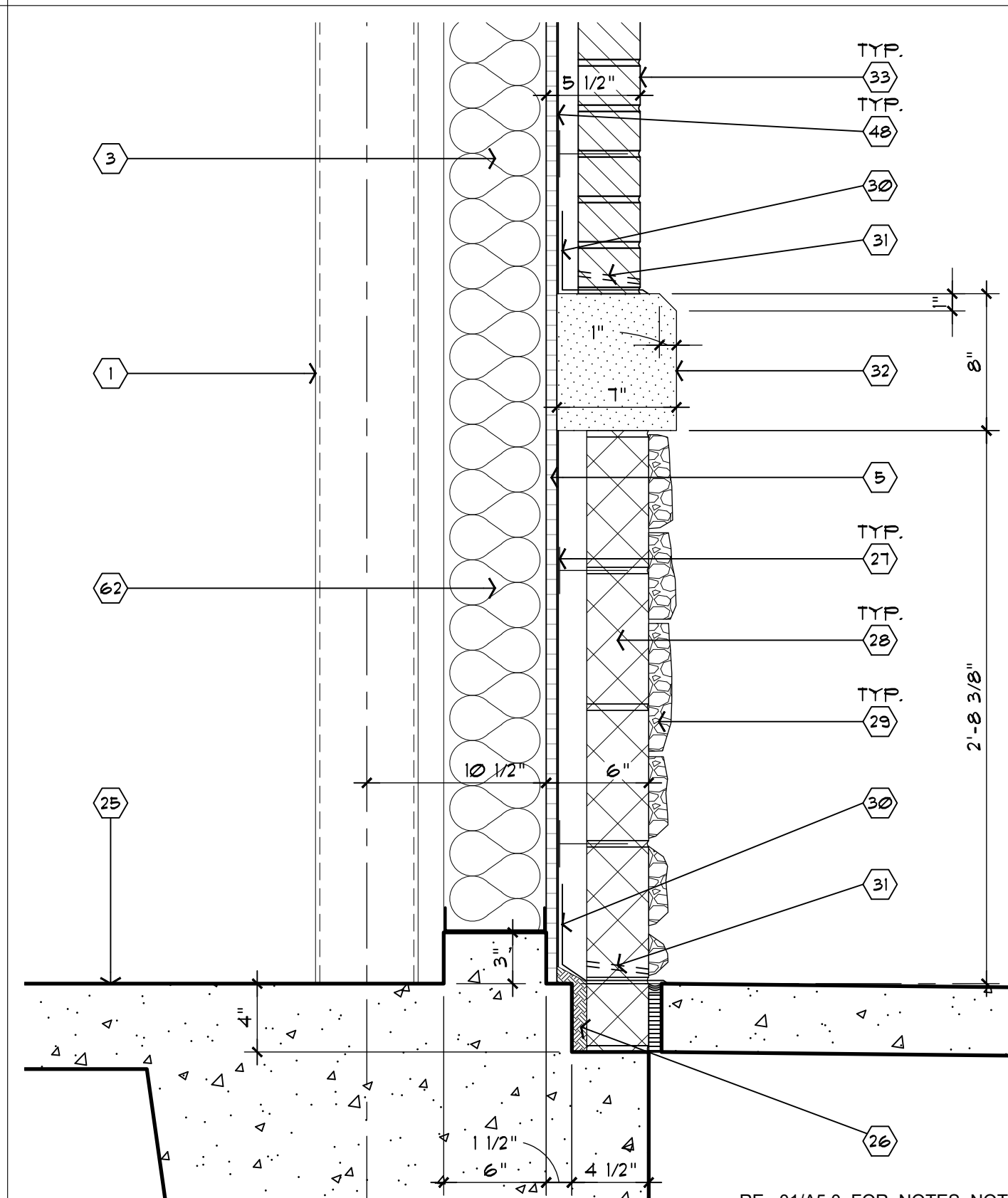
02 SECTION
SCALE: 1 1/2" = 1'-0"



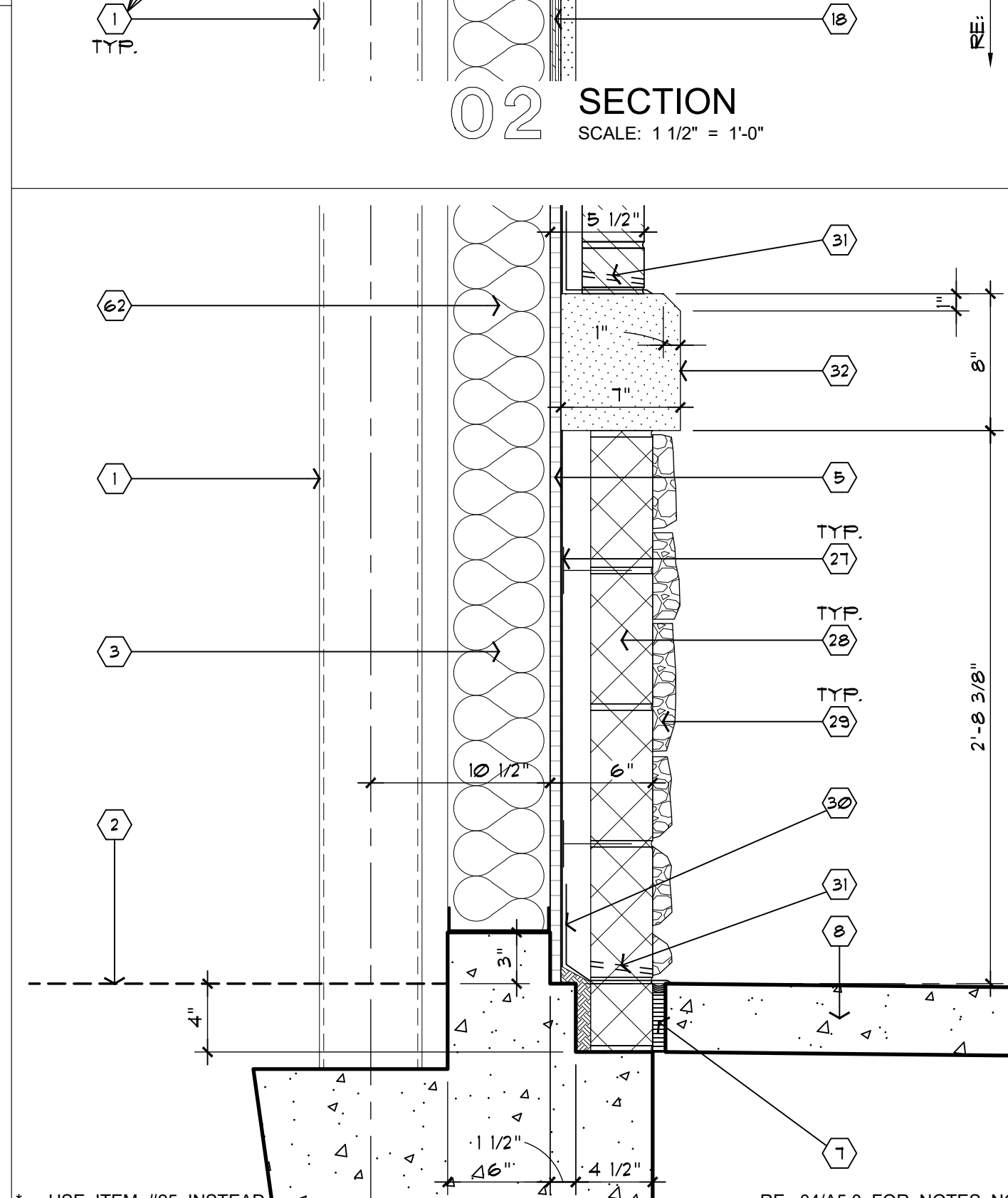
10 SECTION
SCALE: 1 1/2" = 1'-0"



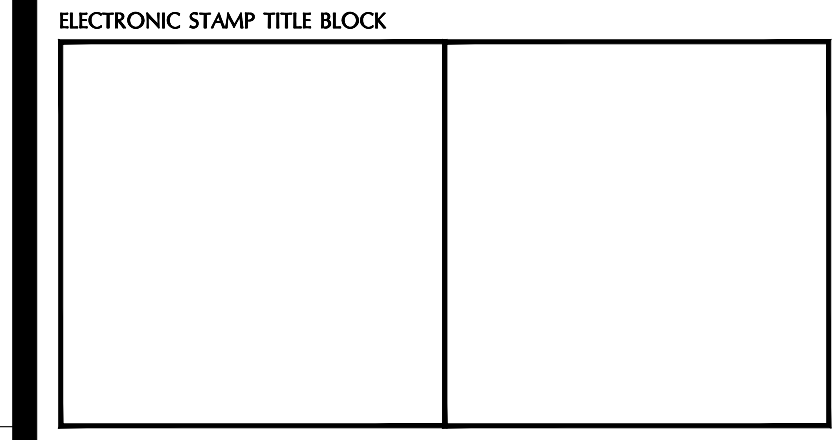
07 SECTION
SCALE: 1 1/2" = 1'-0"



04 SECTION
SCALE: 1 1/2" = 1'-0"



01 SECTION
SCALE: 1 1/2" = 1'-0"



OSBORN & VANE ARCHITECTS, INC.
2000 Bering Drive, Suite 410
Houston, Texas 77057
713 781 5282
Fax 713 781 5347
Members American Institute of Architects



TRACT 30
STONE HILL TOWN CENTER
18708 LIMESTONE COMMERCIAL DRIVE
PFLUGERVILLE, TEXAS 78660

Project No. 24071
CAD Dwg File 24071 A5.0-A53.DWG
Drawn DB
Checked BS