

## Addendum No. 6

Austin Masjid  
800 N Heatherwilde Blvd., Pflugerville, TX 78660  
June 19, 2026



To the Drawings and Specifications dated 4/17/2026, for the Austin Masjid project, 800 North Heatherwilde Boulevard, Pflugerville, Texas 78660, prepared by F S Group Architects, 16575 Village Drive, Houston, Texas 77040, 713-344-1752:



6/19/26

Addendum Date: 6/19/2026

Project Number: 2305

---

### NOTICE TO BIDDERS:

- A. This Addendum shall be considered part of the Bid Documents for the above-mentioned project as though it has been issued at the same time and incorporated integrally therewith. Where provisions of the following supplementary data differ from those of the original Contract Documents, this Addendum shall govern and take precedence.
- B. Bidders are hereby notified that they shall make any necessary adjustments in their estimates on account of this Addendum. It will be construed that each Bidder's proposal is submitted with full knowledge of all modifications and supplemental data specified herein.
- C. Bidders shall acknowledge receipt of this Addendum on the appropriate space on the Bid Form.
- D. The date for receipt of bids is unchanged by this Addendum – Friday, 6/26/26, 2:00pm CDT.

---

### RESPONSES TO BIDDERS' QUESTIONS:

**Question 1:** *Keystone 8 on sheet A211 calls decorative 1" Hardi Panel CNC Cut, but elevation shows EF-2, which is EIFS. Please confirm which material to price.*

**Answer 1:** *These are decorative bands of Hardi with an EIFS finish.*

**Q2:** *L1 calls for stamped/stained/decorative concrete at the courtyard area. A100 calls for artificial turf and reclaimed terracotta pavers at the courtyard area C6 appears to match up with the L sheets.*

*Please confirm which plan sheet to price landscape pavers. Landscape plan L1 indicates stamped and decorative concrete. While Sheet A100 calls for reclaimed Terracotta color brick. If reclaimed Terracotta, please provide specs. Please clarify.*

Page 1 of 8

### F S Group Architects

ARCHITECTURE INTERIOR DESIGN MASTER PLANNING  
16575 Village Drive • Houston, Texas 77040 • office 713.344.1752 • www.fsdesignbuild.com

Addendum No. 6

Austin Masjid  
800 N Heatherwilde Blvd., Pflugerville, TX 78660  
June 19, 2026



<b>A2:</b>	<i>Assume stamped and decorative concrete.</i>
<b>Q3:</b>	<i>Our steel suppliers are telling me that the second floor perimeter angle iron size does not exist. (4x5.5x1/4), S12 - S19. Please advise.</i>
<b>A3:</b>	<b>PSCE RESPONSE: USE EQUAL OR BETTER STEEL ANGLE. AVAILABLE IN THE MARKET.</b>
<b>Q4:</b>	<i>Can you please let us know the thickness of the concrete at the second floor metal deck? And reinforcement?</i>
<b>A4:</b>	<b>PSCE RESPONSE" 5" THICK CONCRETE SLAB, #3@12" OC.E.W., 4,000 PSI CONCRETE.</b>
<b>Q5:</b>	<i>How should we address possible required changes and revisions to drawings, as both the site development and building drawings are still in Pflugerville permitting?</i>
<b>A5:</b>	<i>Bidders should bid the drawings as issued. It is not possible to anticipate changes. Some adjustments to post-bid results may be necessary to reflect AHJ requirements.</i>
<b>Q6:</b>	<i>The Geotechnical Report requires a 2.5-foot undercut and replacement with compacted select fill across the building pad. This requirement is not reflected in the issued Cut/Fill Volume Report and represents a material earthwork exposure that requires clarification before bid (RFI Question 9.1).</i>
<b>A6:</b>	<b>PSCE RESPONSE: FOLLOW GEOTECHNICAL REPORT, RECOMMENDATIONS ON PAGE#16., REMOVAL OF SOIL 6" – 30" DARK BROWN CLAY.</b>
<b>Q7:</b>	<i>Curb ramp at the public ROW: drawings indicate 7" JRCP over 6" flex base per City of Pflugerville. Please confirm this section applies to the full driveway approach or only the curb cut.</i>
<b>A7:</b>	<b>PSCE RESPONSE: REFER SHEET #14 ATTACHED, CITY DRIVEWAY DETAIL. See attached AM Civil Detail 433S2.</b>
<b>Q8:</b>	<i>Confirm the fire lane width, turning radius, and surfacing material. The site plan shows fire lane access but the specification for pavement section is unclear.</i>
<b>A8:</b>	<b>PSCE RESPONSE: REFER SHEET #18 AND #19.</b>
<b>Q9:</b>	<i>Confirm the site grading and drainage plan accounts for the 2.5' undercut and select fill required by the Geotech Report. Are imported fill quantities the GC's responsibility or by allowance?</i>

Addendum No. 6

Austin Masjid  
800 N Heatherwilde Blvd., Pflugerville, TX 78660  
June 19, 2026



<b>A9:</b>	<i>PSCE RESPONSE: FOLLOW GEOTECHNICAL REPORT FOR PAVEMENT DESIGN AND FOUNDATION DESIGN CUT &amp; FILL.</i>
<b>Q10:</b>	<i>Confirm wind load Risk Category for the two minarets and provide TDLR access compliance details (ladder, platform, fall protection).</i>
<b>A10:</b>	<i>PSCE RESPONSE : REFER SHEET #S0 RISK CATEGORY III. FOLLOW ARCHITECT FOR TDLR COMPLIANCE – IF REQUIRED. FSG: Access is included in drawings.</i>
<b>Q11:</b>	<i>HSS column field connections — Addendum 3 revised the bolted clip detail. Please confirm whether all field connections are now bolted or if welded connections remain in any locations.</i>
<b>A11:</b>	<i>PSCE RESPONSE: EITHER BOLT OR WELDED CONNECTIONS, CONTRACTOR SHALL PROVIDE SHOP DRAWINGS FOR REVIEW.</i>
<b>Q12:</b>	<i>Confirm dome structure: material (FRP / GFRC / steel-framed), connection to roof framing, and lightning protection termination.</i>
<b>A12:</b>	<i>PSCE RESPONSE: FOLLOW MANUFACTURER DOME MATERIAL AND CONNECTION DETAILS, CONTACT THE OWNER OR ARCHITECT FOR DOME MANUFACTURE AND MATERIAL. FSG: Secure dome to structure per dome manufacturer’s requirements.</i>
<b>Q13:</b>	<i>Provide clarification on F1–F12 footing schedule — are any footings affected by the Geotech undercut requirement, and does pier depth need to extend below the select-fill zone?</i>
<b>A13:</b>	<i>PSCE RESPONSE: BOTTOM OF FOOTING SHALL BE 3.5FT BELOW EXISTING GRADE OR FINISH GRADE.</i>
<b>Q14:</b>	<i>Please confirm masonry scope is intended to be carried by the GC and reissue the masonry schedule if revised.</i>
<b>A14:</b>	<i>Masonry is limited to bases of decorative exterior columns.</i>
<b>Q15:</b>	<i>Division 14 Elevator — Spec 14 26 00 calls for a LULA elevator for the 2-story ADA path. Please confirm location, capacity, and whether a hoistway is shown on the architectural drawings.</i>
<b>A15:</b>	<i>See attached <b>AM Hoist Beam</b> detail.</i>
<b>Q16:</b>	<i>Wood ceiling at the ceremonial entry — confirm species, grade, finish, and whether installation is by a specialty millwork sub or the GC carpentry crew.</i>

Addendum No. 6

Austin Masjid  
 800 N Heatherwilde Blvd., Pflugerville, TX 78660  
 June 19, 2026



<b>A16:</b>	<i>See attached <b>AM Faux Beam Detail</b>.</i>
<b>Q17:</b>	<i>Countertops — please confirm material (quartz, solid surface, stone) and locations (Wudu, kitchen, restrooms). Are countertops carried under Div 12 or Div 06 millwork?</i>
<b>A17:</b>	<i>Typical countertops at millwork/casework, Mawaid Kitchen along pass-thru windows and VIP Kitchen is solid surface, color TBD from standard range. Other counters in Mawaid Kitchen are stainless steel tables.</i>
<b>Q18:</b>	<i>Confirm walk-in cooler/freezer manufacturer, dimensions, refrigerant (R-448A per Add 2), and whether floor pan / ramp is included.</i>
<b>A18:</b>	<i>Basis-of-Design: Bush Refrifgeration combination cooler/freezer for commercial kitchen. Overall outside dimensions 12.5'x19'x8'.</i>
<b>Q19:</b>	<i>Wudu (ablution) stations — Addendum 3 revised the drain and faucet count. Please reissue the final wudu fixture schedule with total count and confirm floor-drain layout.</i>
<b>A19:</b>	<i>Addendum No. 3 did not change plumbing drawings. Fixtures are shown on drawings.</i>
<b>Q20:</b>	<i>Confirm the kitchen plumbing scope for Mawaid kitchen — grease interceptor sizing, hot water demand, and gas piping for cooking equipment.</i>
<b>A20:</b>	<i>Mawaid kitchen requirements might change per Owner's kitchen consultant. Please document assumptions for post-bid discussion.  <b>See attached AM VIP Kitchen</b> layout for basic residential appliances.</i>
<b>Q21:</b>	<i>Please confirm the vapor barrier requirement under the slab per the Geotech Report — type, thickness, and lap requirements.</i>
<b>A21:</b>	<b>PSCE RESPONSE: FOLLOW THE GEOTECHNICAL ENIGNEER FOR SPECIFICATIONS. VAPOR BARRIER IS REQUIRED. (10 – 15 MILS.)</b>
<b>Q22:</b>	<i>Confirm the RTU schedule per Addendum 3 — tonnage, MERV-13 filters, gas piping size, and electrical service. MERV-13 may affect static pressure and unit sizing.</i>
<b>A22:</b>	<i>RTU schedule was not modified in Addendum No. 3.</i>
<b>Q23:</b>	<i>Walk-in cooler/freezer refrigerant changed to R-448A per Add 2. Confirm condenser, evaporator, and any low-temp piping coordination.</i>
<b>A23:</b>	<i>Assume standard configuration package for Basis-of-Design equipment from Bush Refrigeration.</i>

## Addendum No. 6

Austin Masjid  
800 N Heatherwilde Blvd., Pflugerville, TX 78660  
June 19, 2026



<b>Q24:</b>	<i>Division 27 Communications — please confirm scope of telecom/fiber rough-in (conduit, J-hooks, backboards, IT room layout) issued in Addendum 3. This is not broken out in the bid.</i>
<b>A24:</b>	<i>There is no IT/Data scope in this Bid, other than any electrical shown on drawings for the IT Room.</i>
<b>Q25:</b>	<i>Light pole conduit per Addendum 3 — 1" branch and 2" feeders with 12 AWG and ground. Please confirm wire size, conduit material (PVC vs. RMC), and depth.</i>
<b>A25:</b>	<b>See attached Revised MEP drawings and narrative.</b>
<b>Q26:</b>	<i>Emergency lighting / exit signs — confirm fixture qty and locations per Addendum 3 layouts, including battery-backup egress for prayer hall.</i>
<b>A26:</b>	<i>Fixtures noted with an "E" are emergency fixtures with battery backup. Contractor is responsible for quantity takeoffs.</i>
<b>Q27:</b>	<i>Exterior wall packs — please confirm fixture spec (LED, photocell, motion), qty, and mounting heights per Addendum 3 schedule.</i>
<b>A27:</b>	<i>Fixture is shown on schedule sheet.</i>
<b>Q28:</b>	<i>Ceremonial entry chandelier — confirm the allowance amount, fixture weight, structural blocking, and rough-in requirements.</i>
<b>A28:</b>	<i>Chandelier Allowance is the average material cost per fixture. The large chandeliers have a maximum weight of 600 lbs. Miscellaneous steel sub-framing for medium and large chandeliers should be allocated.</i>
<b>Q29:</b>	<i>Lightning protection system — please confirm scope (dome terminations, minarets, roof network) and code basis (NFPA 780).</i>
<b>A29:</b>	<i>This is all noted within the lightning protection specification. Requirement is a fully functional lightning protection system designed per section 264113.</i>
<b>Q30:</b>	<i>Confirm the 2.5' undercut and select-fill placement extends across the full building pad, parking, and drive areas, or only under the building footprint.</i>
<b>A30:</b>	<b>PSCE RESPONSE: FOLLOW GEOTECHNICAL REPORT FOR PAVEMENT AND FOUNDATION CUT &amp; FILL RECOMMENDATIONS. IF REQUIRED CONTACT GEOTECHNICAL ENGINEER.</b>
<b>Q31:</b>	<i>Lime stabilization — please confirm depth (typically 8"), lime percentage (typically 6%), and area of application (subgrade under pavement and/or building).</i>

Addendum No. 6

Austin Masjid  
 800 N Heatherwilde Blvd., Pflugerville, TX 78660  
 June 19, 2026



<b>A31:</b>	<i>PSCE RESPONSE: FOLLOW GEOTECHNICAL REPORT, IIF REQUIRED CONTACT GEOTECHNICAL ENGINEER.</i>
<b>Q32:</b>	<i>Termite control (Spec 31 31 16) — please confirm system type (soil treatment vs. bait), warranty, and that it is GC scope.</i>
<b>A32:</b>	<i>Provide termite protection per Specification 313116.</i>
<b>Q33:</b>	<i>Will there be specs for the artificial turf?</i>
<b>A33:</b>	<i>FOLLOW LANDSCAPE PLAN AS PROVIDED. COORDINATION IS REQUIRED FROM THE LANDSCAPE ARCHITECT – IF ANY DEVIATION FROM LANDSCAPE PLAN. CONTACT LANDSCAPE ARCHITECT.</i>
<b>Q34:</b>	<i>Sheet P1.10 shows discrepancy between water heater schedule and riser diagrams on sheet P4.00 - P4.01. The riser diagram shows 4 water heater locations/symbols on the plans. The water heater schedule (EWH Schedule) lists a total of 13 units across those 4 tags.                  -EWH-1: QTY 2 (Room A128)                  -EWH-2: QTY 6 (Room 138 - Kitchen)                  -EWH-3: QTY 3 (Room A243)                  -EWH-4: QTY 1 (Room A206)                  -EWH-5: QTY 1 (Room A138 - Kitchen, 119-gal high temp)                  Please confirm schedule QTY column is correct and that room A138 and A243 are intended to have multiple units manifolded together at those locations.</i>
<b>A34:</b>	<i>QTY column is for number of heating elements per water heater. There will be 5 total water heaters in the building. None of the water heaters are intended to be manifolded together. Riser diagram shows 5 water heaters. Will adjust location discrepancies on P1.10.</i>
<b>Q35:</b>	<i>Keynote 4 on Elevation 1 &amp; 2 Sheet A211, please confirm if additional details will be provided for the dimensions on the cut outs.</i>
<b>A35:</b>	<i>See attached <b>AM Niche Detail</b> for the EIFS niche at exterior walls.</i>
<b>Q36:</b>	<i>Sheet A910 the countertops do not have a color selection and there are different pricing tiers. Please confirm which tier of colors is wanted on the countertops.</i>
<b>A36:</b>	<i>Basis-of-Design: Formica Everform Solid Surface, Grade 02, 0.48", Colors TBD.</i>
<b>Q37:</b>	<i>Detail 9 on Sheet S9 has a 5" slab on grade but Sheet 7 grading plan has</i>

Addendum No. 6

Austin Masjid  
 800 N Heatherwilde Blvd., Pflugerville, TX 78660  
 June 19, 2026



	<i>6" slab on grade on the detail. Please confirm which slab thickness to go off of for pricing.</i>
<b>A37:</b>	<i>PSCE RESPONSE: REFER SHEET S3, 6" THICK CONCRETE SLAB, 33@12"O.C.E.W, CONCRETE 4,000PSI</i>
<b>Q38:</b>	<i>Sheets A210 &amp; Sheet A211 - Most areas call out EIFS, but there are material call out discrepancies of stucco skim coat called out too which changes the cost. Please clarify what surfaces will have EIFS, Stucco, or STO Skimcoat.</i>
<b>A38:</b>	<i>This project uses several exterior wall finishes. 1" thick Leuders limestone is used at the base cladding to cover exposed concrete grade beams, Stucco is the typical wall finish from first floor to 15' AFF. EIFS is higher up on the building.</i>  <i>See attached AM Façade Material Breakdown for the current calculated exterior wall finish areas. Price according to the calculated areas, as exact proportion of finishes may change pending final permitting approval.</i>
<b>Q39:</b>	<i>The pavement thickness design shows (on grading plan and geotech report) Concrete: 6", Base: 4"; Granular Select Fill: Depth not specified. We reviewed the geotechnical report but were unable to find a specified depth for the Granular Select Fill beneath the base course. Could you please clarify the required thickness of the Granular Select Fill?</i>
<b>A39:</b>	<i>Waiting for Geotech response.</i>

**NEW DOCUMENTS:**

The following Documents have been Added and are issued and attached as part of this Addendum:

AM Façade Material Breakdown	Dated 6/19/26
AM MEP Narrative	Dated 6/19/26

**REVISIONS TO DOCUMENTS:**

The following Documents have been Revised and are issued as part of this Addendum:


## Addendum No. 6

Austin Masjid  
800 N Heatherwilde Blvd., Pflugerville, TX 78660  
June 19, 2026



---

### NEW DRAWINGS:

The following Drawing Sheet has been Added and is issued and attached as part of this Addendum:

AM Civil Detail 433S2	Dated 1/26/21
AM Hoist Beam	Dated 6/19/26
AM Faux Beam Detail	Dated 6/19/26
AM VIP Kitchen	Dated 6/19/26
AM Niche Detail	Dated 6/19/26

---

### REVISIONS TO DRAWINGS:

The following Sheets have been Revised and are issued and attached as part of this Addendum:

E1-03 – Schedules	Dated 6/19/26
E2-00 – First Floor – Power	Dated 6/19/26
E5-01 – Details	Dated 6/19/26
E5-02 – Details	Dated 6/19/26
FP1-00 – First Floor Fire Protection	Dated 6/19/26
MEP1-01 – Site Plan	Dated 6/19/26
P1-00 – Notes and Legend	Dated 6/19/26
P1-10 – Fixture Schedules	Dated 6/19/26
P2-00 – First Floor – Domestic	Dated 6/19/26
P2-01 – Second Floor – Domestic	Dated 6/19/26
P3-00 – First Floor – Sanitary	Dated 6/19/26
P3-01 – Second Floor – Sanitary	Dated 6/19/26
P4-00 – First Floor – Domestic Riser	Dated 6/19/26
P4-01 – Second Floor – Domestic Riser	Dated 6/19/26
P4-02 – First Floor – Sanitary Riser	Dated 6/19/26
P4-03 – Second Floor – Sanitary Riser	Dated 6/19/26

End of Addendum No. 6

Austin Masjid

Addendum No. 6

MEP Narrative of Changes

Sheet Name Changes

**ELECTRICAL**

- E1.03      ADDED CIRCUITS FOR THE KITCHEN COOLER AND FREEZER TO PANEL "H1" SCHEDULE. ADDED CIRCUIT FOR EDF-1 TO PANEL "L1" SCHEDULE.
- E2.00      ADDED KEYED NOTE 5, CIRCUITS FOR THE KITCHEN COOLER, KITCHEN FREEZER, AND ELECTRIC DRINKING FOUNTAIN (EDF-1) TO FIRST FLOOR POWER PLAN
- E5.01      ADDED DETAILS FOR DUCT BANK, POLE BASE, POLE LIGHT WIRING DIAGRAM AND QUAZITE PULL BOX.
- E5.02      ADDED SHEET E5.02 WITH DETAILS FOR LIGHTING CONTACTOR, CONCRETE ENCASE DUCT BANK, EMERGENCY BALLAST, TRENCHING, DISCONNECT SWITCH, CONDUIT RACK, AND CONDUIT WALL PENETRATION.

**PLUMBING**

- FP1.00     TAGGED FS-1
- MEP1.01    ADDED PLUMBING SITE PLAN NOTES
- P1.00      ADJUSTED PIPING MATERIALS NOTES AND ADDED APPLICABLE CODE

P1.01 ADJUSTED FIXTURE SCHEDULE ADDED L-7

P2.00 ADJUSTED PIPING, ADDED AND TAGGED SHUT OFF VALVES. ADDED NOTES.

P2.01 ADJUSTED PIPING, ADDED AND TAGGED SHUT OFF VALVES. ADDED NOTES.

P3.00 ADJUSTED PIPING, ADJUSTED TAGS. ADDED NOTES.

P3.01 ADJUSTED PIPING, ADJUSTED TAGS. ADDED NOTES.

P4.00 ADJUSTED TO MATCH FLOOR PLAN. ADJUSTED TAGS

P4.01 ADJUSTED TO MATCH FLOOR PLAN. ADJUSTED TAGS

P4.02 ADJUSTED TO MATCH FLOOR PLAN. ADJUSTED TAGS

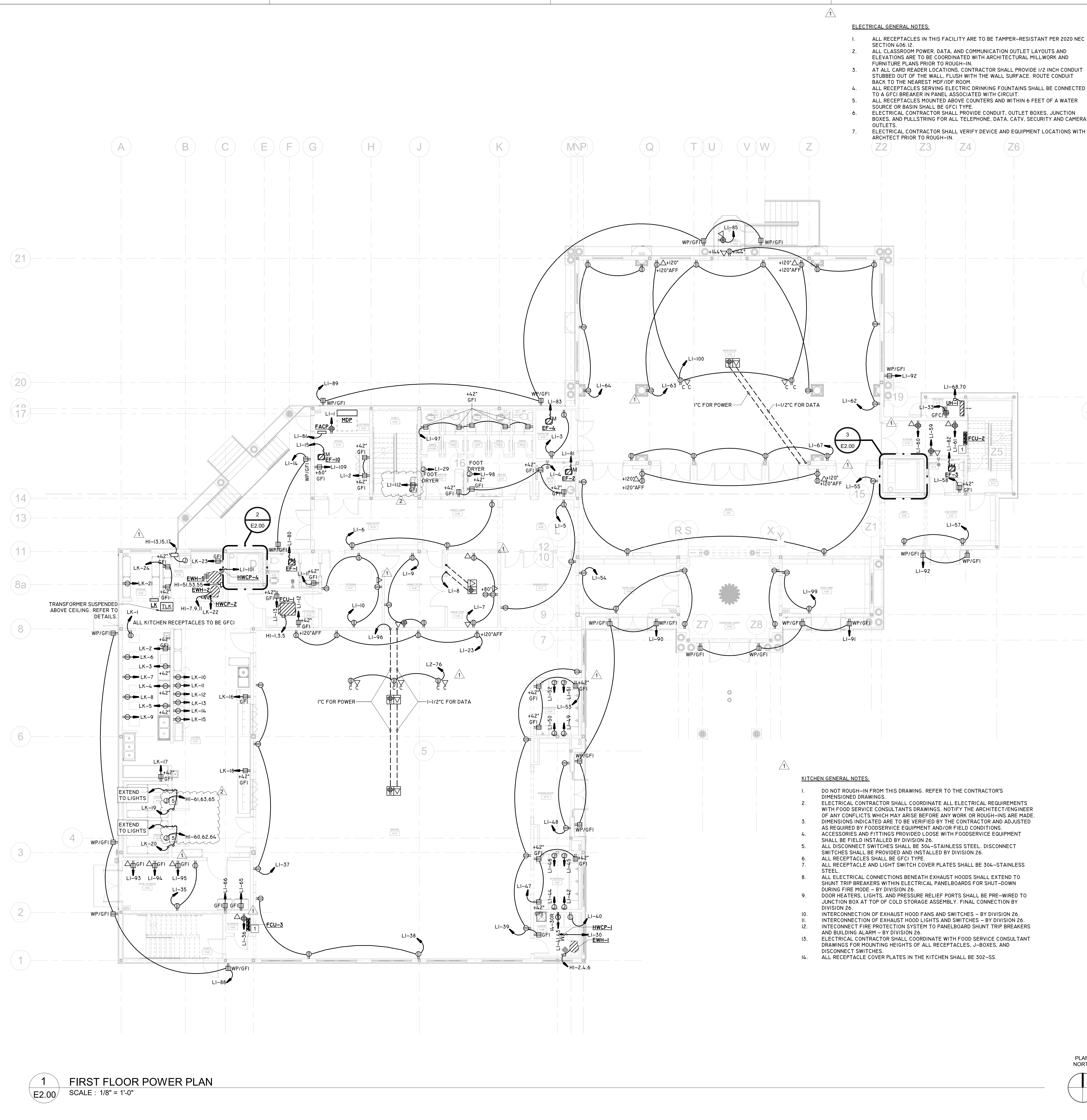
P4.03 ADJUSTED TO MATCH FLOOR PLAN. ADJUSTED TAGS

PANEL: L2		LOCATION: ELEC ROOM		FED FROM: TL2		MTG: X SURFACE FLUSH STRUT		BUS: 100% NEUTRAL SYS GND ISO GND		OPT: X INT SPD FTL FUSIBLE		ENCL: NEMA TYPE 1 STEEL		MAIN: 225 A CU/SN 225 A MCB		3 0 4 WIRE 22 KAIC 208Y/120 VOLT	
IA CK...	IA CKT Feeder	LOAD DESCRIPTION	LOAD TYPE	TRIP RATE	P	PKT NO	A (kVA)	B (kVA)	C (kVA)	PKT NO	P	TRIP RATE	LOAD TYPE	LOAD DESCRIPTION	IA CKT Feeder	IA CK...	
3/4"	1#12, 1#12, 1#12	REFRIGERATOR - BREAK RM A242	Q	20	1	1	1.0	0.2		2	1	20	R	MICROWAVE - BREAK RM A242	1#12, 1#12, 1#12	3/4"	
3/4"	1#12, 1#12, 1#12	RECEPTACLE - BREAK RM A242	R	20	1	3		0.2	1.5	4	1	20	R	MICROWAVE - BREAK RM A242	1#12, 1#12, 1#12	3/4"	
3/4"	1#12, 1#12, 1#12	RECEPTACLE - RM A240A241	R	20	1	5			0.5	6	1	20	R	RECEPTACLE - CLASS A238	1#12, 1#12, 1#12	3/4"	
3/4"	1#12, 1#12, 1#12	RECEPTACLE CLASS A238	R	20	1	7	0.7	0.9		8	1	20	R	RECEPTACLE - CLASS A235	1#12, 1#12, 1#12	3/4"	
3/4"	1#12, 1#12, 1#12	RECEPTACLE - CLASS A235	R	20	1	9		0.7	0.9	10	1	20	R	RECEPTACLE - CLASS A234	1#12, 1#12, 1#12	3/4"	
3/4"	1#12, 1#12, 1#12	RECEPTACLE - CLASS A234	R	20	1	11			0.7	12	1	20	R	RECEPTACLE - CLASS A233	1#12, 1#12, 1#12	3/4"	
3/4"	1#12, 1#12, 1#12	RECEPTACLE - CLASS A233	R	20	1	13	0.7	0.9		14	1	20	R	RECEPTACLE - RM A230A237	1#12, 1#12, 1#12	3/4"	
3/4"	1#12, 1#12, 1#12	RECEPTACLE - CLASS A236	R	20	1	15		0.4	0.7	16	1	20	R	RECEPTACLE - CLASS A236	1#12, 1#12, 1#12	3/4"	
3/4"	1#12, 1#12, 1#12	RECEPTACLE - CLASS A226	R	20	1	17			0.7	18	1	20	R	RECEPTACLE - CLASS A226	1#12, 1#12, 1#12	3/4"	
3/4"	1#12, 1#12, 1#12	RECEPTACLE - SOUTH HALL A227	R	20	1	19	0.7	0.9		20	1	20	R	RECEPTACLE - CLASS A229	1#12, 1#12, 1#12	3/4"	
3/4"	1#12, 1#12, 1#12	RECEPTACLE - CLASS A229	R	20	1	21		0.7	0.9	22	1	20	R	RECEPTACLE - CLASS A228	1#12, 1#12, 1#12	3/4"	
3/4"	1#12, 1#12, 1#12	RECEPTACLE - CLASS A228	R	20	1	23			0.7	24	1	20	R	RECEPTACLE - CLASS A225	1#12, 1#12, 1#12	3/4"	
3/4"	1#12, 1#12, 1#12	RECEPTACLE - CLASS A225	R	20	1	25	0.7	0.9		26	1	20	R	RECEPTACLE - CLASS A224	1#12, 1#12, 1#12	3/4"	
3/4"	1#12, 1#12, 1#12	RECEPTACLE - CLASS A224	R	20	1	27		0.7	0.9	28	1	20	R	RECEPTACLE - CLASS A223	1#12, 1#12, 1#12	3/4"	
3/4"	1#12, 1#12, 1#12	RECEPTACLE - CLASS A223	R	20	1	29			0.7	30	1	20	R	RECEPTACLE - CLASS A222	1#12, 1#12, 1#12	3/4"	
3/4"	1#12, 1#12, 1#12	RECEPTACLE - CLASS A222	R	20	1	31	0.7	0.5		32	1	20	R	RECEPTACLE - STAFF A218	1#12, 1#12, 1#12	3/4"	
3/4"	1#12, 1#12, 1#12	RECEPTACLE - STAFF A218	R	20	1	33			0.7	34	1	20	R	RECEPTACLE - STAFF A218	1#12, 1#12, 1#12	3/4"	
3/4"	1#12, 1#12, 1#12	RECEPTACLE - AV A219	R	20	1	35			0.4	36	1	20	R	RECEPTACLE - OFFICE A217	1#12, 1#12, 1#12	3/4"	
3/4"	1#12, 1#12, 1#12	RECEPTACLE - RECEPTION A216	R	20	1	37	1.3	0.7		38	1	20	R	RECEPTACLE - MADRASAH LOBBY A213	1#12, 1#12, 1#12	3/4"	
3/4"	1#12, 1#12, 1#12	RECEPTACLE - ELECTRICAL A212	R	20	1	39		0.5	0.5	40	1	20	R	RECEPTACLE - LIBRARY A210	1#12, 1#12, 1#12	3/4"	
3/4"	1#12, 1#12, 1#12	RECEPTACLE - LIBRARY A210	R	20	1	41		0.4	0.7	42	1	20	R	RECEPTACLE - WOMEN RR A209	1#12, 1#12, 1#12	3/4"	
3/4"	1#12, 1#12, 1#12	RECEPTACLE - NURSERY A201	R	20	1	43	0.4	0.5		44	1	20	R	RECEPTACLE - CONFERENCE A200	1#12, 1#12, 1#12	3/4"	
3/4"	1#12, 1#12, 1#12	RECEPTACLE - CONFERENCE A200	R	20	1	45		0.5	0.4	46	1	20	R	RECEPTACLE - SEHEN A201	1#12, 1#12, 1#12	3/4"	
3/4"	1#12, 1#12, 1#12	RECEPTACLE - SEHEN A201	R	20	1	47			0.4	48	1	20	R	RECEPTACLE - ADA RR A206	1#12, 1#12, 1#12	3/4"	
3/4"	1#12, 1#12, 1#12	RECEPTACLE - MASJID A202	R	20	1	49	0.7	0.7		50	1	20	R	RECEPTACLE - MASJID A202	1#12, 1#12, 1#12	3/4"	
3/4"	1#12, 1#12, 1#12	RECEPTACLE - MASJID A202	R	20	1	51		0.7	0.5	52	1	20	M	EF-6 VIA MOTOR RATED SWITCH	1#12, 1#12, 1#12	3/4"	
3/4"	1#12, 1#12, 1#12	EF-7 - ROOF	M	20	1	53			0.5	54	2	15	C, H	CJ-2	2#12, 1#12, 1#12	3/4"	
3/4"	1#12, 1#12, 1#12	RECEPTACLE - ROOF	R	20	1	55	0.9	0.7		56	1	20	L	VIA 30AS/NF/3P/NEMA-3R DS	2#12, 1#12, 1#12	3/4"	
3/4"	1#12, 1#12, 1#12	RECEPTACLE - EXTERIOR	R	20	1	57		0.7	0.9	58	1	20	M	HWCP-3 VIA MOTOR RATED SWITCH	1#12, 1#12, 1#12	3/4"	
3/4"	1#12, 1#12, 1#12	EF-5 - ADA RR A206	M	20	1	59			0.5	60	1	20	M	EF-6 VIA MOTOR RATED SWITCH	1#12, 1#12, 1#12	3/4"	
3/4"	1#12, 1#12, 1#12	RECEPTACLE - ASSEMBLY A214	R	20	1	61	0.9	0.7		62	1	20	R	RECEPTACLE - ASSEMBLY A214	1#12, 1#12, 1#12	3/4"	
3/4"	1#12, 1#12, 1#12	RECEPTACLE - TLT A230C, E, A231C, E	R	20	1	63		0.7	0.7	64	1	20	R	RECEPTACLE - SEHEN A201	1#12, 1#12, 1#12	3/4"	
3/4"	1#12, 1#12, 1#12	FOOT DRYER - WOMEN RR A209	Q	20	1	65		1.7	0.4	66	1	20	L	CHANDELIER - MENS MASJID A202	1#12, 1#12, 1#12	3/4"	
3/4"	1#12, 1#12, 1#12	CHANDELIER - MENS MASJID A202	L	20	1	67	0.4	0.4		68	1	20	L	CHANDELIER - MENS MASJID A202	1#12, 1#12, 1#12	3/4"	
3/4"	1#12, 1#12, 1#12	CHANDELIER - MENS MASJID A202	L	20	1	69		0.5	0.5	70	1	20	L	CHANDELIER - MENS MASJID A202	1#12, 1#12, 1#12	3/4"	
3/4"	1#12, 1#12, 1#12	CHANDELIER - SEHEN A201	L	20	1	71		0.6	0.1	72	1	20	L	CHANDELIER - CONFERENCE A200	1#12, 1#12, 1#12	3/4"	
3/4"	1#12, 1#12, 1#12	CHANDELIER - LIBRARY A210	L	20	1	73	0.1	0.1		74	1	20	L	CHANDELIER - STAIR 2	1#12, 1#12, 1#12	3/4"	
3/4"	1#12, 1#12, 1#12	RECEPTACLE - ASSEMBLY A214	R	20	1	75		0.5	0.5	76	1	20	R	RECEPTACLE - MAWAID A112	1#12, 1#12, 1#12	3/4"	
3/4"	1#12, 1#12, 1#12	RECEPTACLE - BREAK RM A242	R	20	1	77			0.4	78	1	20	R	EDF-1 - MADRASAH RR A239	1#12, 1#12, 1#12	3/4"	
1#12, 1#12, 1#12	SPARE			20	1	79	0.0	0.0		80	1	20			1#12, 1#12, 1#12	--	
1#12, 1#12, 1#12	SPARE			20	1	81		0.0	0.0	82	1	20			1#12, 1#12, 1#12	--	
1#12, 1#12, 1#12	SPARE			20	1	83		0.0	0.0	84	1	20			1#12, 1#12, 1#12	--	
1#12, 1#12, 1#12	SPARE			20	1	85	0.0	0.0		86	1	20			1#12, 1#12, 1#12	--	
1#12, 1#12, 1#12	SPARE			20	1	87		0.0	0.0	88	1	20			1#12, 1#12, 1#12	--	
1#12, 1#12, 1#12	SPARE			20	1	89		0.0	0.0	90	1	20			1#12, 1#12, 1#12	--	
1#12, 1#12, 1#12	SPARE			20	1	91	0.0	0.0		92	1	20			1#12, 1#12, 1#12	--	
1#12, 1#12, 1#12	SPARE			20	1	93		0.0	0.0	94	1	20			1#12, 1#12, 1#12	--	
1#12, 1#12, 1#12	SPARE			20	1	95		0.0	0.0	96	1	20			1#12, 1#12, 1#12	--	
1#12, 1#12, 1#12	SPARE			20	1	97	0.0	0.0		98	1	20			1#12, 1#12, 1#12	--	
1#12, 1#12, 1#12	SPARE			20	1	99		0.0	0.0	100	1	20			1#12, 1#12, 1#12	--	
1#12, 1#12, 1#12	SPARE			20	1	101		0.0	0.0	102	1	20			1#12, 1#12, 1#12	--	
1#12, 1#12, 1#12	SPARE			20	1	103	0.0	0.0		104	1	20			1#12, 1#12, 1#12	--	
1#12, 1#12, 1#12	SPARE			20	1	105		0.0	0.0	106	1	20			1#12, 1#12, 1#12	--	
1#12, 1#12, 1#12	SPARE			20	1	107	0.0	0.0		108	1	20			1#12, 1#12, 1#12	--	
1#12, 1#12, 1#12	SPARE			20	1	109	0.0	0.0		110	1	20			1#12, 1#12, 1#12	--	
1#12, 1#12, 1#12	SPARE			20	1	111		0.0	0.0	112	1	20			1#12, 1#12, 1#12	--	
1#12, 1#12, 1#12	SPARE			20	1	113		0.0	0.0	114	1	20			1#12, 1#12, 1#12	--	
1#12, 1#12, 1#12	SPARE			20	1	115	0.0	0.0		116	1	20			1#12, 1#12, 1#12	--	
1#12, 1#12, 1#12	SPARE			20	1	117		0.0	0.0	118	1	20			1#12, 1#12, 1#12	--	
1#12, 1#12, 1#12	SPARE			20	1	119		0.0	0.0	120	1	20			1#12, 1#12, 1#12	--	
							<b>Total Load:</b>	17 kVA	17 kVA	16 kVA	16 kVA						
							<b>Total Amps:</b>	148 A	45 A	129 A							

LOAD TYPE		CONNECTED	FACTOR	DEMAND	TOTALS	
LIGHTING	L	12663 VA	125.00%	15829 VA	CONNECTED LOAD (kVA)	215 kVA
RECEPTACLE	R	0 VA	0.00%	0 VA	DEMAND LOAD (kVA)	218 kVA
EQUIPMENT	Q	179500 VA	100.00%	179500 VA	CONNECTED CURRENT (A)	259 A
COOLING	C	16620 VA	100.00%	16620 VA	DEMAND CURRENT (A)	262 A
HEATING	H	5000 VA	100.00%	5000 VA		
MOTOR	M	2181 VA	100.00%	2181 VA		
LARGEST MOTOR	G	0 VA	0.00%	0 VA		
KITCHEN	K	0 VA	0.00%	0 VA		
EXISTING	X	0 VA	0.00%	0 VA		

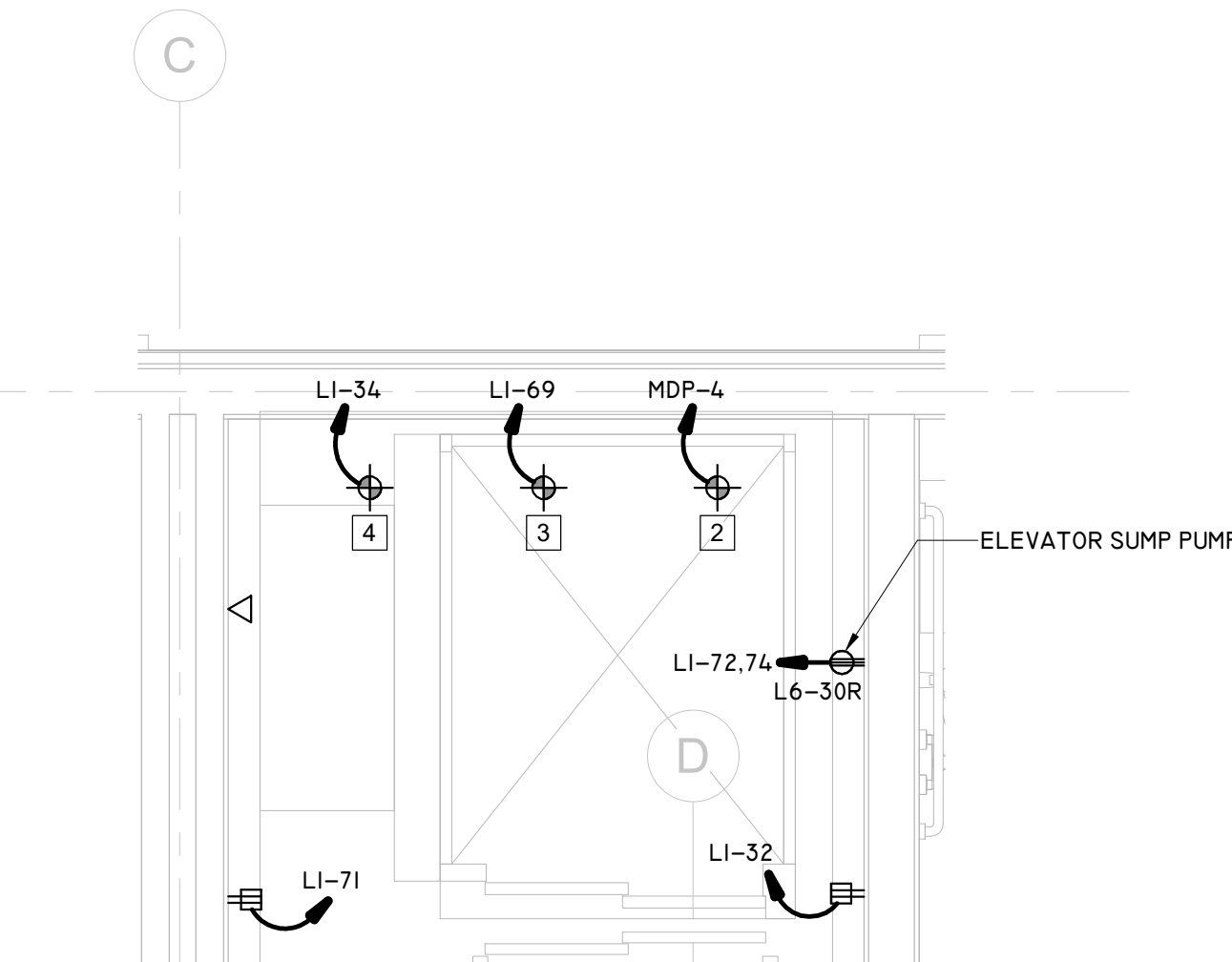
NOTES:  
ALL WIRING FOR 20A/1P CKT. SHALL CONSIST OF 2#12, 1#12G IN 3/4" UNLESS OTHERWISE NOTED.  
\* PROVIDE A BREAKER WITH GFCl \*\* ROUTE CIRCUIT THROUGH LIGHTING CONTACTOR

PANEL: LK		LOCATION: ELEC ROOM		FED FROM: TLK		MTG: X SURFACE FLUSH STRUT		BUS: 100% NEUTRAL SYS GND ISO GND		OPT: X INT SPD FTL FUSIBLE		ENCL: NEMA TYPE 1 SS-316		MAIN: 150 A CU/SN 150 A MCB		3 0 4 WIRE 22 KAIC 208Y/120 VOLT	
IA CK...	IA CKT Feeder	LOAD DESCRIPTION	LOAD TYPE	TRIP RATE	P	PKT NO	A (kVA)	B (kVA)	C (kVA)	PKT NO	P	TRIP RATE	LOAD TYPE	LOAD DESCRIPTION	IA CKT Feeder	IA CK...	
1#12, 1#12, 1#12, 3/4"	1#12, 1#12, 1#12, 3/4"	GAS SOLENOID - KITCHEN A137	R	20	1	1	0.2	1.5		2	1	20	R	MICROWAVE - KITCHEN A137	1#12, 1#12, 1#12, 3/4"	3/4"	
1#12, 1#12, 1#12, 3/4"	1#12, 1#12, 1#12, 3/4"	RECEPTACLE - KITCHEN A137	R	20	1	3		0.2	0.2	4	1	20	R	RECEPTACLE - KITCHEN A137	1#12, 1#12, 1#12, 3/4"	3/4"	
1#12, 1#12, 1#12, 3/4"	1#12, 1#12, 1#12, 3/4"	RECEPTACLE - KITCHEN A137	R	20	1	5			0.2	6	1	20	R	RECEPTACLE - KITCHEN A137	1#12, 1#12, 1#12, 3/4"	3/4"	
1#12, 1#12, 1#12, 3/4"	1#12, 1#12, 1#12, 3/4"	RECEPTACLE - KITCHEN A137	R	20	1	7	0.2	0.2		8	1	20	R	RECEPTACLE - KITCHEN A137	1#12, 1#12, 1#12, 3/4"	3/4"	
1#12, 1#12, 1#12, 3/4"	1#12, 1#12, 1#12, 3/4"	RECEPTACLE - KITCHEN A137	R	20	1	9		0.2	0.2	10	1	20	R	RECEPTACLE - KITCHEN A137	1#12, 1#12, 1#12, 3/4"	3/4"	
1#12, 1#12, 1#12, 3/4"	1#12, 1#12, 1#12, 3/4"	RECEPTACLE - KITCHEN A137	R	20	1	11		0.2	0.2	12	1	20	R	RECEPTACLE - KITCHEN A137	1#12, 1#12, 1#12, 3/4"	3/4"	
1#12, 1#12, 1#12, 3/4"	1#12, 1#12, 1#12, 3/4"	RECEPTACLE - KITCHEN A137	R	20	1	13	0.2	0.2		14	1	20	R	RECEPTACLE - KITCHEN A137	1#12, 1#12, 1#12, 3/4"	3/4"	
1#12, 1#12, 1#12, 3/4"	1#12, 1#12, 1#12, 3/4"	RECEPTACLE - KITCHEN A137	R	20	1	15		0.2	1.0	16	1	20	Q	REFRIGERATOR - KITCHEN A137	1#12, 1#12, 1#12, 3/4"	3/4"	
1#12, 1#12, 1#12, 3/4																	

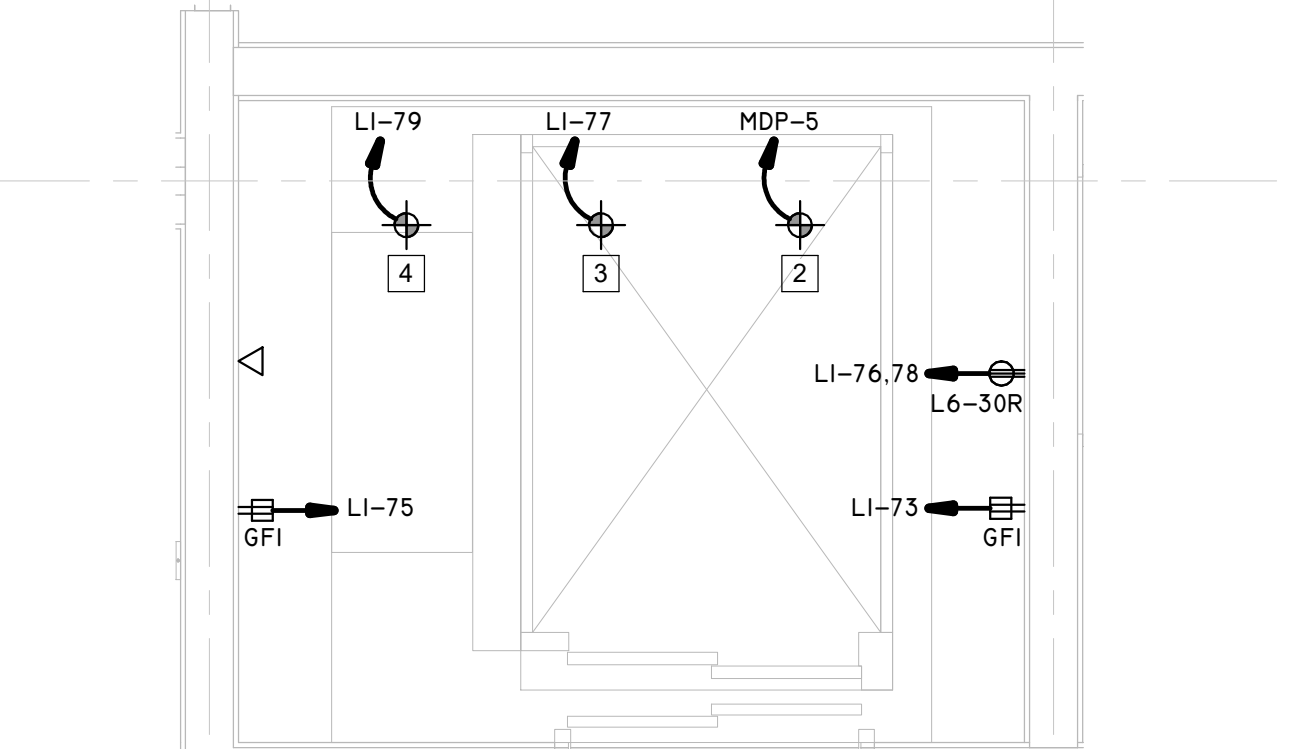


- ELECTRICAL GENERAL NOTES:**
1. ALL RECEPTACLES IN THIS FACILITY ARE TO BE TAMPER-RESISTANT PER 2020 NEC SECTION 406.12.
  2. ALL CLASSROOM POWER, DATA, AND COMMUNICATION OUTLET LAYOUTS AND ELEVATIONS ARE TO BE COORDINATED WITH ARCHITECTURAL MILLWORK AND FURNITURE PLANS PRIOR TO ROUGH-IN.
  3. AT ALL CARD READER LOCATIONS, CONTRACTOR SHALL PROVIDE 1/2 INCH CONDUIT STUBBED OUT OF THE WALL, FLUSH WITH THE WALL SURFACE. ROUTE CONDUIT BACK TO THE NEAREST MDF/DIF ROOM.
  4. ALL RECEPTACLES SERVING ELECTRIC DRINKING FOUNTAINS SHALL BE CONNECTED TO A GFCI BREAKER IN PANEL ASSOCIATED WITH CIRCUIT.
  5. ALL RECEPTACLES MOUNTED ABOVE COUNTERS AND WITHIN 6 FEET OF A WATER SOURCE OR BASIN SHALL BE GFCI TYPE.
  6. ELECTRICAL CONTRACTOR SHALL PROVIDE CONDUIT, OUTLET BOXES, JUNCTION BOXES, AND PULLSTRING FOR ALL TELEPHONE, DATA, CATV, SECURITY AND CAMERA OUTLETS.
  7. ELECTRICAL CONTRACTOR SHALL VERIFY DEVICE AND EQUIPMENT LOCATIONS WITH ARCHITECT PRIOR TO ROUGH-IN.

- KEYED NOTE LEGEND**
- 1 INDOOR UNIT FED BY VFCI CABLE FROM OUTDOOR UNIT. PROVIDE 1" IMC FROM ASSOCIATED CONDENSING UNIT OUTSIDE TO THIS LOCATION WITH PULLSTRING FOR CABLE.
  - 2 PROVIDE POWER FOR ELEVATOR. COORDINATE POWER INPUT LOCATION AND BUSSMAN ELEVATOR POWER MODULE LOCATION WITH ELEVATOR INSTALLER PRIOR TO ROUGH-IN.
  - 3 PROVIDE POWER FOR ELEVATOR CAB LIGHTING. COORDINATE POWER INPUT LOCATION WITH ELEVATOR INSTALLER PRIOR TO ROUGH-IN. PROVIDE LOCAL 30AS/NF/IP/NEMA-1 LOCAL DS.
  - 4 PROVIDE POWER FOR ELEVATOR CAB FANS. COORDINATE POWER INPUT LOCATION WITH ELEVATOR INSTALLER PRIOR TO ROUGH-IN. PROVIDE LOCAL 30AS/NF/IP/NEMA-1 LOCAL DS.
  - 5 COORDINATE FINAL LOCATION OF CIRCUIT CONNECTION WITH EQUIPMENT VENDOR PRIOR TO ROUGH-IN AND INSTALLATION.



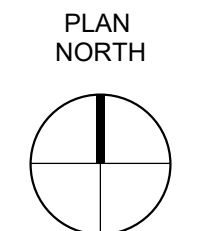
**2 ENLARGED ELEVATOR 1 PLAN**  
SCALE: 1/2" = 1'-0"



**3 ENLARGED ELEVATOR 2 PLAN**  
SCALE: 1/2" = 1'-0"

- KITCHEN GENERAL NOTES:**
1. DO NOT ROUGH-IN FROM THIS DRAWING. REFER TO THE CONTRACTOR'S DIMENSIONED DRAWINGS.
  2. ELECTRICAL CONTRACTOR SHALL COORDINATE ALL ELECTRICAL REQUIREMENTS WITH FOOD SERVICE CONSULTANTS DRAWINGS. NOTIFY THE ARCHITECT/ENGINEER OF ANY CONFLICTS WHICH MAY ARISE BEFORE ANY WORK OR ROUGH-INS ARE MADE. DIMENSIONS INDICATED ARE TO BE VERIFIED BY THE CONTRACTOR AND ADJUSTED AS REQUIRED BY FOODSERVICE EQUIPMENT AND/OR FIELD CONDITIONS.
  3. ACCESSORIES AND FITTINGS PROVIDED LOOSE WITH FOODSERVICE EQUIPMENT SHALL BE FIELD INSTALLED BY DIVISION 26.
  4. ALL DISCONNECT SWITCHES SHALL BE 304-STAINLESS STEEL. DISCONNECT SWITCHES SHALL BE PROVIDED AND INSTALLED BY DIVISION 26.
  5. ALL RECEPTACLES SHALL BE GFCI TYPE.
  6. ALL RECEPTACLE AND LIGHT SWITCH COVER PLATES SHALL BE 304-STAINLESS STEEL.
  7. ALL ELECTRICAL CONNECTIONS BENEATH EXHAUST HOODS SHALL EXTEND TO SHUNT TRIP BREAKERS WITHIN ELECTRICAL PANELBOARDS FOR SHUT-DOWN DURING FIRE MODE - BY DIVISION 26.
  8. INTERCONNECTION OF EXHAUST HOOD LIGHTS AND SWITCHES - BY DIVISION 26.
  9. INTERCONNECTION OF EXHAUST HOOD FANS AND SWITCHES - BY DIVISION 26.
  10. INTERCONNECT FIRE PROTECTION SYSTEM TO PANELBOARD SHUNT TRIP BREAKERS AND BUILDING ALARM - BY DIVISION 26.
  11. ELECTRICAL CONTRACTOR SHALL COORDINATE WITH FOOD SERVICE CONSULTANT DRAWINGS FOR MOUNTING HEIGHTS OF ALL RECEPTACLES, J-BOXES, AND DISCONNECT SWITCHES.
  12. ALL RECEPTACLE COVER PLATES IN THE KITCHEN SHALL BE 302-SS.

**1 FIRST FLOOR POWER PLAN**  
SCALE: 1/8" = 1'-0"



REVISIONS

No.	DESCRIPTION	DATE
1	ISSUE FOR PERMIT	4-17-26
1	ADDENDUM 3	6-03-26
2	ADDENDUM 6	6-19-26











### ELECTRIC WATER HEATER SCHEDULE

MARK	MFR	MODEL	VOLTS	Ø	ELEMENT(S) QTY	RECOVERY GPH @ 100°F RISE	TANK CAPACITY GALLONS	LOCATION
EWH-1	A.O. SMITH	DRE-52	480	3	2 4.5	36	50	ROOM #A128
EWH-2	A.O. SMITH	DRE-52	480	3	6 4.0	98	50	ROOM #A138
EWH-3	A.O. SMITH	DEL-40	480	3	3 6.0	74	40	ROOM #A211
EWH-4	A.O. SMITH	DEL-20	480	1	1 4.5	18	20	ROOM #A206
EWH-5	A.O. SMITH	DRE-120	480	3	9 4.5	166	119	ROOM #A138

- NOTES:
- OUTLET TEMPERATURE SHALL BE 140°F.
  - PROVIDE **TMV-1** LEONARD MIXING VALVE MODEL 370. INLET SIZE 3/4" AND OUTLET SIZE 3/4". MIXING VALVE HOT WATER OUTLET TEMP SHALL BE SET TO (160°F) TO PREVENT BACTERIA GROWTH.
  - PROVIDE **TMV-1** LEONARD MIXING VALVE MODEL 370. INLET SIZE 3/4" AND OUTLET SIZE 3/4". MIXING VALVE HOT WATER OUTLET TEMP SHALL BE SET TO (160°F) FOR EWH-5 TO SERVICE KITCHEN.
  - PROVIDE SIMULTANEOUS ELEMENT OPERATION.
  - PROVIDE EXPANSION TANK. SIZE TANK PER MANUFACTURER'S RECOMMENDATIONS.

### HOT WATER CIRCULATING PUMP SCHEDULE

MARK	MFR	MODEL NO.	TYPE	G.P.M.	HEAD	H.P.	VOLTAGE	MOTOR R.P.M.	LOCATION
HWCP-1	BELL & GOSSETT	PL-55	IN LINE BRONZE	15	4.0	2/5	120 / 1ø	3250	ROOM #A128
HWCP-2	BELL & GOSSETT	PL-55	IN LINE BRONZE	15	4.0	2/5	120 / 1ø	3250	ROOM #A138
HWCP-3	BELL & GOSSETT	PL-55	IN LINE BRONZE	15	4.0	2/5	120 / 1ø	3250	ROOM #A211

- NOTES:
- HOT WATER CIRCULATION PUMP SHALL BE PROVIDED WITH TIMER TO DE-ENERGIZE THE PUMP UNDER UNOCCUPIED PERIODS PER THE CURRENT IECC.

### PLUMBING FIXTURE SCHEDULE

MARK	DESCRIPTION	SIZE OF CONNECTION					REMARKS
		TRAP	SS	SV	CW	HW	
WB-1	WASHING MACHINE DRAIN BOX	2"	2"	2"	1/2"	1/2"	B-200 GUY GRAY, WASHING MACHINE DRAIN BOX. FINISH: MINIMUM SPANGLE G90 HOT DIPPED GALVANIZED STEEL (UNPAINTED) VALVES. FURNISHED WITH DOMESTIC VALVES AND COMBINATION NIP OR SWEAT CONNECTION DRAIN. MALE THREAD FITTING AND LOCKNUT INCLUDED.
WH-1	WALL HYDRANT (FREEZE PROOF)	-	-	-	3/4"	-	5510 J.R. SMITH, BRONZE QUARTER TURN NON-FREEZE AUTOMATIC DRAINING HYDRANT WITH STAINLESS STEEL FACE, HOSE CONNECTION, INTEGRAL VACUUM BREAKER AND DUAL CHECK VALVE. "T" HANDLE KEY, WHEEL HANDLE AND STAINLESS STEEL BOX WITH FULL 180° COVER OPENING.
HB-1	HOSE BIB	-	-	-	3/4"	-	442-8306/ACP CHICAGO FAUCETS, POLISHED CHROME PLATED SOLID BRASS BODY. 40" STAINLESS STEEL HOSE WITH PUSH BUTTON SELF-CLOSING HAND SPRAY, SPRAY WALL HOOK, 2 3/8" LEVER HANDLE WITH EIGHT POINT TAPERED BROADEN AND SECURED COLOR CODED WHITE INDEX. SLO-COMPRESSION RENEWABLE CARTRIDGE DESIGNED TO CLOSE WITH WATER PRESSURE WITH SQUARE TAPERED BROADEN FEATURE TO HELP FACILITATE HANDLE REMOVAL. IN-LINE COMBINATION FLOW REGULATOR AND BACK FLOW PREVENTER, 1/2" NPT FEMALE INLET WITH LOOSE WALL FLANGE. MOUNTING HARDWARE INCLUDED. PROVIDE ANTI-SCALDING THERMOSTATIC MIXING VALVE. MIXING VALVE SHALL COMPLY WITH ASSE 1070

### PLUMBING FIXTURE SCHEDULE

MARK	DESCRIPTION	SIZE OF CONNECTION					REMARKS
		TRAP	SS	SV	CW	HW	
EDF-1	ELECTRIC DRINKING FOUNTAIN (B-I-LEVEL) (A.D.A.)	1 1/2"	2"	2"	1/2"	-	HAC8F8BL-WF-Q ADA HALSEY TAYLOR, WALL MOUNT WATER COLLER, BARRIER-FREE ACCESS BI-LEVEL, NO LEAD DRINKING FOUNTAIN, LIGHT TOUCH PUSHBAR ON FRONT. INSTALL COMPLETE WITH CUNO WATER FILTER, STAINLESS STEEL, VANDAL RESISTANT WATER COOLER FOR MULTIPLE WATER COOLER INSTALLATION REFER TO ARCHITECTURAL DRAWINGS FOR MOUNTING HEIGHTS AND LOCATION.  BY02 MCGUIRE, 1/2 IPS X 3/8 OD, QUARTER-TURN BRASS BALL VALVE ANGLE STOP, CHROME PLATED, CONVERTIBLE LOOSE KEY HANDLE. SUPPLY STOP VALVE SHALL BE CERTIFIED BY CSA OR OTHER RECOGNIZED TESTING AUTHORITY AND SHALL BEAR MANUFACTURER AND TESTING MARK. STOP TO BE CERTIFIED TO 200 PSI LINE PRESSURE.  8872 MCGUIRE, HEAVY CAST BRASS 1 1/4 X 1 1/4 ADJUSTABLE TRAP WITH CLEANOUT PLUG AND HINCH CENTER TO END, FURNISHED WITH SLIP NUTS, 17 GAUGE SEAMLESS TUBULAR BRASS WALL BEND, AND STEEL SHALLOW FLANGE.  MLP100 HALSEY TAYLOR, IN WALL CARRIER MOUNTING SYSTEM.
MS-1	MOP SINK (FLOOR MOUNTED)	3"	3"	2"	3/4"	3/4"	HL-1800 STERN WILLIAMS HILOW, 24"x24"x12" DRAIN SHALL CAST BRASS WITH STAINLESS STEEL STRAINER CAST INTEGRAL AND SHALL PROVIDE FOR CALLED LEAD CONNECTION NOT LESS THAN 1" DEEP TO A 3" PIPE. TERRAZZO RECEPTOR COMPOSED OF PEARL, GREY MARBLE CHIPS AND WHITE PORTLAND CEMENT GROUND SMOOTH, GROUTED AND SEALED TO RESIST STAINS. STAINLESS STEEL CAP OF ONE PIECE 20 GA. 302 STAINLESS STEEL CAST INTEGRAL ON FROM DROF.  540-1D8975WXB/BCP CHICAGO FAUCETS, 8" FIXED CENTERS, 66PM, 897-SJKPC - 5 3/4" RIGID VACUUM BREAKER SPOUT WITH 3/4" MALE HOSE THREAD AND PAIL HOOK, 369-PR - 2 3/8" LEVER HANDLE, XT - QUARTER COMPRESSION OPERATING CARTRIDGE, WXF - STRAIGHT 2" INLET SUPPLY ARM WITH WALL FLANGE WITH 1/2" NPT FEMALE THREAD INLET, ATMOSPHERIC VACUUM BREAKER, NOT INTENDED FOR CONTINUOUS PRESSURE APPLICATIONS, CHROME PLATE FINISH.  T-35 STERN WILLIAMS, HOSE AND WALL HOOK, HOSE 36" LONG, WITH 3/4" CHROME COUPLINGS, WALL BRACKET OF STAINLESS STEEL.  T-40 STERN WILLIAMS, STAINLESS STEEL MOP HANGER OF STAINLESS STEEL WITH #4 FINISH, 24" LONG, WITH 3 RUBBER SPRING LOADED GRIPS.  BP STERN WILLIAMS, SPLASH CATCHER PANELS OF 20 GA. TYPE 304 STAINLESS STEEL.
FD-1	FLOOR DRAIN	3'-4"	3'-4"	2"	-	-	2005-B-NB J.R. SMITH, DUCO CAST IRON BODY WITH FLASHING COLLAR AND ADJUSTABLE STRAINER HEAD 6" DIAMETER TYPE "A" NICKEL BRONZE STRAINER.  INSTALL COMPLETE WITH PROSET TRAP GUARD, EXCEPT FOR SHOWER DRAIN.
ECO	EXTERIOR CLEANOUT	-	-	-	-	-	4250 J.R. SMITH, ALL EXTERIOR CLEANOUTS SHALL BE SET AT FINISHED GRADE IN 6 INCH THICK CONCRETE PAD FINISHED SMOOTH ON TOP. HOUSING SHALL BE COMPLETELY FREE OF PIPING SO NO LOADING IS TRANSMITTED TO THE PIPE.
FCO	FLOOR CLEANOUT	-	-	-	-	-	4560 J.R. SMITH, WITH SCREWED PLUG AND FLASHING RING AND COVER PLATE WITH SECURING SCREW. COVER PLATE SHALL BE FLUSH TO FINISH FLOOR, AND SUITABLE FOR FLOOR COVERING INSTALLED.
WCO	WALL CLEANOUT	-	4"	2"	1"	-	4435 J.R. SMITH, WITH SCREWED PLUG AND FLASHING RING AND COVER PLATE WITH SECURING SCREW. COVER PLATE SHALL BE FLUSH TO FINISH WALL. COORDINATE WITH ARCHITECTURAL DRAWINGS FOR CASEWORK LOCATIONS. COVER PLATE SHALL THEN BE FLUSHED WITH CASEWORK'S FINISH BACK WALL.
FS-1	FLOOR SINK	4'-6"	4'-6"	2"	-	-	2415-15G J.R. SMITH, 1/2" TOP GRATE, INDIRECT WASTE FLOOR SINK, DUCO CAST IRON BODY, LOOSE GRATE WITH SEDIMENT BUCKET 12"x12", -10" DEEP, FURNISH AND INSTALL WITH DEEP SEAL P-TRAP ASSEMBLY. INSTALL COMPLETE WITH PROSET TRAP GUARD.
RVB-1	REFRIGERATOR/ ICE MAKER VALVE BOX	-	-	-	1/2"	-	BIM875 - GUY GRAY - REFRIGERATOR/ ICE MAKER VALVE BOX, FURNISHED WITH 1/2" FIP INLET X 1/4" OD OUTLET COMPRESSION ANGLE VALVE. PROVIDE FILTER WHEN MAKING FINAL CONNECTION. (FURNISH AND INSTALL AT ALL REFRIGERATORS AND ICE MACHINES)
SH-2	SHOWER	-	-	-	3/4"	-	ASA015GCCO "VICTORIA" ROCA, BI-NICKEL, CHROME WALL-MOUNTED BATH-SHOWER MIXER WITH AUTOMATIC DIVERTER, HAND-SHOWER, 170 M FLEXIBLE HOSE AND SWIVEL WALL BRACKET, 5.28 GPM
SH-1	SHOWER	-	-	-	3/4"	-	FS15037 "MARSEILLE" FONTANA, 9" ROUND BATHROOM WALL MOUNTED BRASS SHOWER SYSTEM FACET, ROTATABLE LIFTING HANDLE SINGLE HOLDER DUAL CONTROL.
RD-1	ROOF DRAIN (PRIMARY)	-	-	-	-	-	1010-AD J.R. SMITH, DUCO CAST IRON BODY WITH COMBINED FLASHING CLAMP AND GRAVEL STOP WITH CAST IRON DOME.
RD-2	ROOF DRAIN (OVERFLOW)	-	-	-	-	-	1080C-AD J.R. SMITH, DUCO CAST IRON BODY WITH WIDE FLANGE, COMBINED FLASHING CLAMP AND WATER DAM WITH CAST IRON DOME.
DN-1	DOWNSPOUT NOZZLE	-	-	-	-	-	1770 J.R. SMITH, DOWNSPOUT NOZZLE, CAST BRONZE NOZZLE AND FLANGE.
SK-1	SINGLE BOWL SINK (A.D.A.)	1 1/2"	3"	2"	1/2"	1/2"	LRAD1716 ELKAY, SINGLE BOWL (16" X 17" W X 6" D INSIDE BOWL), #18 GAUGE TYPE 304 NICKEL BEARING STAINLESS STEEL, SELF RIMMING, 2 HOLE 4" CENTER.  895-317GN2BE/ABCP CHICAGO FAUCETS, 4" FIXED CENTERS, GN28AB - 5-1/4" RIGID / SWING GOOSENECK SPOUT, E4AB - 2.0 GPM (7.6 L/MIN) SPRAY, 317-PR - 4" WRISTBLADE HANDLE, XTAB - QUARTER COMPRESSION OPERATING CARTRIDGE, 1/2" NPSM SUPPLY INLETS AND COUPLING NUT FOR 3/8" OR 1/2" FLEXIBLE RISER, CHROME PLATE FINISH, WEIGHT: 5.00LBS, PACKAGE DIMENSIONS: 11.50" X 6.00" W X 5.00" H, ECAS10 CONSTRUCTION WITH EQUAL TO OR LESS THAN 0.25% LEAD CONTENT BY WEIGHTED AVERAGE, THIS ITEM SHIPS 10 BUSINESS DAYS FROM ORDER ACKNOWLEDGEMENT.  151 MCGUIRE, HEAVY DUTY FORGED BRASS BASKET STRAINER WITH A POLISHED AND CHROME PLATED BRASS STRAINER BODY, 1 1/2" X 4" SEAMLESS BRASS TAILPIECE, CAST BRASS LOCK AND COUPLING NUTS.  1151WC MCGUIRE, 1 1/2" ADA COMPLIANT OFFSET STRAINER/DRAIN ASSEMBLY AND TAILPIECE.  C8912 MCGUIRE, 1 1/2" CAST BODY P-TRAP AND CLEANOUT. INSULATE P-TRAP, TAILPIECE ASSEMBLY.  BY02 MCGUIRE, 1/2 IPS X 3/8 OD, QUARTER-TURN BRASS BALL VALVE ANGLE STOP, CHROME PLATED, CONVERTIBLE LOOSE KEY HANDLE. SUPPLY STOP VALVE SHALL BE CERTIFIED BY CSA OR OTHER RECOGNIZED TESTING AUTHORITY AND SHALL BEAR MANUFACTURER AND TESTING MARK. STOP TO BE CERTIFIED TO 200 PSI LINE PRESSURE.  270-RF-STSTL-REC LEONARD, POINT OF USE THERMOSTATIC VALVE MIXING VALVE, BRONZE BODY, LOCKED TEMPERATURE ADJUSTMENT CAP (VANDAL RESISTANT), COPPER ENCAPSULATED THERMOSTAT ASSEMBLY WITH POLYMER THERMOPLASTIC SHUTTLE, STAINLESS STEEL SPRINGS, BUNA-N O-RINGS, INTEGRAL CHECK VALVES ON HOT AND COLD INLETS. SET TEMPERATURE TO 105°F
SK-2	HAND SINK	1 1/2"	3"	2"	1/2"	1/2"	7-PS-68 ADVANCE TABCO, WALL MOUNTED HAND SINK, ONE PIECE DEEP DRAWN SINK BOWL (10"X14"X10"), KEYHOLE WALL MOUNT BRACKET, STAINLESS STEEL BASKET DRAIN 1 1/2"IPS, 4"O.C. SPLASH MOUNTED GOOSENECK FAUCET, CHROME PLATED FURNISHED WITH AERATOR.  2165 MCGUIRE, ANGLE SUPPLY/WHEEL HANDLE.  8872 MCGUIRE, CAST BODY P-TRAP AND CLEANOUT. INSULATE P-TRAP, TAILPIECE ASSEMBLY, AND HOT AND COLD WATER ANGLE VALVES WITH BROCAR PRODUCTS, INC. TRAP WRAP.  LFUSG-B-SC WATTS THERMOSTATIC MIXING VALVE, MIXING VALVE WITH DOUBLE THROTTLING DESING, TEMPERATURE SHALL BE SET TO 110°.
SK-3	3-COMPARTMENT SINK	3"	1 1/2"	2"	1/2"	1/2"	D1-3-1610 ADVANCE TABCO, THREE COMPARTMENT DROP-IN SINK 21"x50"x10", ONE PIECE SEAMLESS DEEP DRAWN SINK BOWL DESIGN, 18 GAUGE TYPE 304 SERIES STAINLESS STEEL.  K-53 ADVANCE TABCO, 12" SWING SPOUT FAUCET, 4" O.C.  2165 MCGUIRE, 1/2" I.P.S. X 3/8" O.D. ANGLE STOP AND SUPPLY-WHEEL HANDLE.  C8912 MCGUIRE, 1-1/4 CHROME PLATED "P" TRAP WITH CLEAN OUT
SK-4	2-COMPARTMENT SINK	3"	1 1/2"	2"	1/2"	1/2"	94-1-24-24R ADVANCE TABCO, 16"x20"x14" 1 COMPARTMENT WITH RIGHT DRAINBOARDS, STAINLESS STEEL OPEN FRAME BASE, 18" DRAINBOARDS.  K-1 ADVANCE TABCO, 12" SWING SPOUT FAUCET, 8" CENTER.  2165 MCGUIRE, 1/2" I.P.S. X 3/8" O.D. ANGLE STOP AND SUPPLY-WHEEL HANDLE.  C8912 MCGUIRE, 1-1/4 CHROME PLATED "P" TRAP WITH CLEAN OUT
SK-5	2-COMPARTMENT SINK	3"	1 1/2"	2"	1/2"	1/2"	FS-2-2424 ADVANCE TABCO, 24"x24"x14" 2 COMPARTMENT STAINLESS STEEL OPEN FRAME BASE.  K-1 ADVANCE TABCO, 12" SWING SPOUT FAUCET, 8" CENTER.  2165 MCGUIRE, 1/2" I.P.S. X 3/8" O.D. ANGLE STOP AND SUPPLY-WHEEL HANDLE.  C8912 MCGUIRE, 1-1/4 CHROME PLATED "P" TRAP WITH CLEAN OUT

### PLUMBING FIXTURE SCHEDULE

MARK	DESCRIPTION	SIZE OF CONNECTION					REMARKS
		TRAP	SS	SV	CW	HW	
WC-1	WATER CLOSET (FLOOR MOUNTED) (A.D.A.)	-	4"	2"	1/2"	-	2467.100 AMERICAN STANDARD "CADET", VITREOUS CHINA, HIGH EFFICIENCY, ULTRA LOW CONSUMPTION 1.6GPF, ELONGATED BOWL, PRESSURE-ASSISTED SIPHON JET FLUSH ACTION.  9500CT CHURCH, EXTRA HEAVY WEIGHT AND INJECTION MOLED OF SOLID PLASTIC, OPEN FRONT LESS COVER FOR ELONGATED BOWL AND FEATURE LARGE MOLDED-IN BUMPERS, CONCEALED CHECK HINGES TO FEATURE 300 SERIES STAINLESS STEEL POSTS THAT STOP SEAT 11 DEGREES BEYOND VERTICAL, USES 300 SERIES STAINLESS STEEL HARDWARE.  BY02 MCGUIRE, 1/2 IPS X 3/8 OD, QUARTER-TURN BRASS BALL VALVE ANGLE STOP, CHROME PLATED, CONVERTIBLE LOOSE KEY HANDLE. SUPPLY STOP VALVE SHALL BE CERTIFIED BY CSA OR OTHER RECOGNIZED TESTING AUTHORITY AND SHALL BEAR MANUFACTURER AND TESTING MARK. STOP TO BE CERTIFIED TO 200 PSI LINE PRESSURE.  WATER CLOSET SHALL BE 16-1/8" ABOVE FINISHED FLOOR LEVEL.
WC-2	WATER CLOSET (FLOOR MOUNTED)	-	4"	2"	1"	-	10810004 "SQUAT TOILET" SANINUSIA PUBLIC SQUAT TOILET, SQUAT PAN, WITH 1-1/2" SPUD.  111-1 28-ES-5-TMO SLOAN "OPTIMA", 1" I.P.S. SCREWDRIVER BAK-CHEK 9 ANGLE STOP, FREE SPINNING VANDAL RESISTANT STOP CAP, HIGH BACK PRESSURE VACUUM BREAKER FLUSH CONNECTION WITH ONE-PIECE BOTTOM HEX COUPLING NUT, SPUD COUPLING AND FLANGE FOR 1" TOP SPUD, EL-154 TRANSFORMER (20 VAC/24 VAC 50 VA). THE PLUMBING CONTRACTOR IS RESPONSIBLE FOR THE CORRECT LOW VOLTAGE WIRING BETWEEN THE PANEL TO USE TRANSFORMER FOR THE WATER CLOSETS, URINALS AND FACULTY LAVATORIES. LOCATE THE TRANSFORMERS ABOVE ACCESSIBLE CEILING OR PROVIDE ACCESS PANEL FOR HARD CEILING. UP TO 6 FIXTURE PER TRANSFORMER.  111-1 28-ES-5-TMO SLOAN "OPTIMA", 1" I.P.S. SCREWDRIVER BAK-CHEK 9 ANGLE STOP, FREE SPINNING VANDAL RESISTANT STOP CAP, HIGH BACK PRESSURE VACUUM BREAKER FLUSH CONNECTION WITH ONE-PIECE BOTTOM HEX COUPLING NUT, SPUD COUPLING AND FLANGE FOR 1" TOP SPUD, EL-154 TRANSFORMER (20 VAC/24 VAC 50 VA). THE PLUMBING CONTRACTOR IS RESPONSIBLE FOR THE CORRECT LOW VOLTAGE WIRING BETWEEN THE PANEL TO USE TRANSFORMER FOR THE WATER CLOSETS, URINALS AND FACULTY LAVATORIES. LOCATE THE TRANSFORMERS ABOVE ACCESSIBLE CEILING OR PROVIDE ACCESS PANEL FOR HARD CEILING. UP TO 6 FIXTURE PER TRANSFORMER.  HD155WC MCGUIRE, WHEELCHAIR LAVATORY STRAINER, FURNISHED WITH HEAVY CAST BRASS GRID DRAIN STRAINER, ELBOW AND 1 1/4" 17GA SEAMLESS TUBULAR OFFSET TAILPIECE, PVD CHROME FINISH, ADA COMPLIANT, 8 3/4" X 5 1/8" OD.  BY02 MCGUIRE'S, 1/2 IPS X 3/8 OD, QUARTER-TURN BRASS BALL VALVE ANGLE STOP, CHROME PLATED, CONVERTIBLE LOOSE KEY HANDLE. SUPPLY STOP VALVE SHALL BE CERTIFIED BY CSA OR OTHER RECOGNIZED TESTING AUTHORITY AND SHALL BEAR MANUFACTURER AND TESTING MARK. STOP TO BE CERTIFIED TO 200 PSI LINE PRESSURE.  8872 MCGUIRE, HEAVY CAST BRASS 1 1/4 X 1 1/4 ADJUSTABLE TRAP WITH CLEANOUT PLUG AND HINCH CENTER TO END, FURNISHED WITH SLIP NUTS, 17 GAUGE SEAMLESS TUBULAR BRASS WALL BEND, AND STEEL SHALLOW FLANGE.  LFUSG-B-SC WATTS THERMOSTATIC MIXING VALVE, MIXING VALVE WITH DOUBLE THROTTLING DESING, TEMPERATURE SHALL BE SET TO 110°.
L-1	LAVATORY (UNDER COUNTER MOUNTED) (A.D.A.)	1 1/4"	2"	2"	1/2"	1/2"	0495.221 AMERICAN STANDARD "OVALYN", UNDER COUNTER LAVATORY, VITREOUS CHINA, SINGLE HOLE CENTER MOUNTING.  420-E285ABCP, 4" FIXED CENTERS, 4 5/8" CENTER TO CENTER RIGID CAST BRASS SPOUT, E285AB - 0.5 GPM (1.9 L/MIN) VANDAL PROOF NON-AERATING SPRAY, 420-AB - VOLUME CONTROL AND HOT WATER LIMIT STOP CARTRIDGE, 1/2" NPSM SUPPLY INLETS FOR 3/8" OR 1/2" FLEXIBLE RISER, CHROME PLATE FINISH, WEIGHT: 4.950LBS  HD155WC MCGUIRE, WHEELCHAIR LAVATORY STRAINER, FURNISHED WITH HEAVY CAST BRASS GRID DRAIN STRAINER, ELBOW AND 1 1/4" 17GA SEAMLESS TUBULAR OFFSET TAILPIECE, PVD CHROME FINISH, ADA COMPLIANT, 8 3/4" X 5 1/8" OD.  BY02 MCGUIRE'S, 1/2 IPS X 3/8 OD, QUARTER-TURN BRASS BALL VALVE ANGLE STOP, CHROME PLATED, CONVERTIBLE LOOSE KEY HANDLE. SUPPLY STOP VALVE SHALL BE CERTIFIED BY CSA OR OTHER RECOGNIZED TESTING AUTHORITY AND SHALL BEAR MANUFACTURER AND TESTING MARK. STOP TO BE CERTIFIED TO 200 PSI LINE PRESSURE.  8872 MCGUIRE, HEAVY CAST BRASS 1 1/4 X 1 1/4 ADJUSTABLE TRAP WITH CLEANOUT PLUG AND HINCH CENTER TO END, FURNISHED WITH SLIP NUTS, 17 GAUGE SEAMLESS TUBULAR BRASS WALL BEND, AND STEEL SHALLOW FLANGE.  LFUSG-B-SC WATTS THERMOSTATIC MIXING VALVE, MIXING VALVE WITH DOUBLE THROTTLING DESING, TEMPERATURE SHALL BE SET TO 110°.
L-2	LAVATORY (WALL MOUNTED) (A.D.A.)	1 1/4"	2"	2"	1/2"	-	0611.004 AMERICAN STANDARD "COBNIC", WALL HUNG LAVATORY, BARRIER FREE, VITREOUS CHINA, 3 HOLES 4" CENTER, UTILIZE WALL HANGER INCLUDED.  7385.000 AMERICAN STANDARD "DELIANT 3", 4" FIXED CENTERS, E285B - 0.5 GPM (1.9 L/MIN) VANDAL PROOF NON-AERATING SPRAY, 317-PR - 4" WRISTBLADE HANDLE.  BY02 MCGUIRE, 1/2 IPS X 3/8 OD, QUARTER-TURN BRASS BALL VALVE ANGLE STOP.  149 MCGUIRE, FLAT GRID STRAINER WITH 4" TAILPIECE.  8872 MCGUIRE, HEAVY CAST BRASS 1 1/4 X 1 1/4 ADJUSTABLE TRAP WITH CLEANOUT PLUG.  102-EZ-W TRUEBRO, "P" TRAP AND SUPPLY INSULATION KIT.  LFUSG-B-SC WATTS THERMOSTATIC MIXING VALVE, MIXING VALVE WITH DOUBLE THROTTLING DESING, TEMPERATURE SHALL BE SET TO 110°.
L-3	LAVATORY (WALL MOUNTED) (A.D.A.)	1 1/4"	2"	2"	1/2"	-	DSG-81000 SLOAN "DESIGNER SERIES", WALL HUNG LAVATORY, BARRIER FREE, VITREOUS CHINA, SINGLE HOLE CENTER, UTILIZE WALL HANGER INCLUDED.  EFX-250 SLOAN "BASYS", SELF-ADJUSTING SENSOR BASED, DC (CR-P2 LITHIUM BATTERY) POWERED, 0.35 GPM/1.3L/MIN PRESSURE COMPENSATING, VANDAL-RESISTANT MULTI-LAMINAR SPRAY, EASY TO SERVICE INTEGRATED STRAINER, LEAD-FREE AND SAFETY TIMER WALL-MOUNT ELECTRONIC FAUCET WITH PROXIMITY OPERATION.  BY02 MCGUIRE, 1/2 IPS X 3/8 OD, QUARTER-TURN BRASS BALL VALVE ANGLE STOP.  149 MCGUIRE, FLAT GRID STRAINER WITH 4" TAILPIECE.  8872 MCGUIRE, HEAVY CAST BRASS 1 1/4 X 1 1/4 ADJUSTABLE TRAP WITH CLEANOUT PLUG.  102-EZ-W TRUEBRO, "P" TRAP AND SUPPLY INSULATION KIT.  LFUSG-B-SC WATTS THERMOSTATIC MIXING VALVE, MIXING VALVE WITH DOUBLE THROTTLING DESING, TEMPERATURE SHALL BE SET TO 110°.
L-4	LAVATORY (WALL MOUNTED) (A.D.A.)	1 1/4"	2"	2"	1/2"	-	DSG-82000 SLOAN "DESIGNER SERIES", WALL HUNG LAVATORY, BARRIER FREE, VITREOUS CHINA, SINGLE HOLE CENTER, UTILIZE WALL HANGER INCLUDED.  EFX-250 SLOAN "BASYS", SELF-ADJUSTING SENSOR BASED, DC (CR-P2 LITHIUM BATTERY) POWERED, 0.35 GPM/1.3L/MIN PRESSURE COMPENSATING, VANDAL-RESISTANT MULTI-LAMINAR SPRAY, EASY TO SERVICE INTEGRATED STRAINER, LEAD-FREE AND SAFETY TIMER WALL-MOUNT ELECTRONIC FAUCET WITH PROXIMITY OPERATION. QUANTITY TWO PER FIXTURE  BY02 MCGUIRE, 1/2 IPS X 3/8 OD, QUARTER-TURN BRASS BALL VALVE ANGLE STOP.  149 MCGUIRE, FLAT GRID STRAINER WITH 4" TAILPIECE.  8872 MCGUIRE, HEAVY CAST BRASS 1 1/4 X 1 1/4 ADJUSTABLE TRAP WITH CLEANOUT PLUG.  102-EZ-W TRUEBRO, "P" TRAP AND SUPPLY INSULATION KIT.  LFUSG-B-SC WATTS THERMOSTATIC MIXING VALVE, MIXING VALVE WITH DOUBLE THROTTLING DESING, TEMPERATURE SHALL BE SET TO 110°.
L-5	LAVATORY (WALL MOUNTED) (A.D.A.)	1 1/4"	2"	2"	1/2"	-	DSG-83000 SLOAN "DESIGNER SERIES", WALL HUNG LAVATORY, BARRIER FREE, VITREOUS CHINA, SINGLE HOLE CENTER, UTILIZE WALL HANGER INCLUDED.  EFX-250 SLOAN "BASYS", SELF-ADJUSTING SENSOR BASED, DC (CR-P2 LITHIUM BATTERY) POWERED, 0.35 GPM/1.3L/MIN PRESSURE COMPENSATING, VANDAL-RESISTANT MULTI-LAMINAR SPRAY, EASY TO SERVICE INTEGRATED STRAINER, LEAD-FREE AND SAFETY TIMER WALL-MOUNT ELECTRONIC FAUCET WITH PROXIMITY OPERATION. QUANTITY THREE PER FIXTURE  BY02 MCGUIRE, 1/2 IPS X 3/8 OD, QUARTER-TURN BRASS BALL VALVE ANGLE STOP.  149 MCGUIRE, FLAT GRID STRAINER WITH 4" TAILPIECE.  8872 MCGUIRE, HEAVY CAST BRASS 1 1/4 X 1 1/4 ADJUSTABLE TRAP WITH CLEANOUT PLUG.  102-EZ-W TRUEBRO, "P" TRAP AND SUPPLY INSULATION KIT.  LFUSG-B-SC WATTS THERMOSTATIC MIXING VALVE, MIXING VALVE WITH DOUBLE THROTTLING DESING, TEMPERATURE SHALL BE SET TO 110°.
L-6	LAVATORY (WALL MOUNTED) (A.D.A.)	1 1/4"	2"	2"	1/2"	-	LVAD-1 BRADLEY "VERGE", WALL HUNG LAVATORY, BARRIER FREE, VITREOUS CHINA, SINGLE HOLE CENTER, UTILIZE WALL HANGER INCLUDED.  S83-3100 BRADLEY "VERGE", SELF-ADJUSTING SENSOR BASED, DC (CR-P2 LITHIUM BATTERY) POWERED, 0.35 GPM/1.3L/MIN PRESSURE COMPENSATING, VANDAL-RESISTANT MULTI-LAMINAR SPRAY, EASY TO SERVICE INTEGRATED STRAINER, LEAD-FREE AND SAFETY TIMER WALL-MOUNT ELECTRONIC FAUCET WITH PROXIMITY OPERATION. QUANTITY THREE PER FIXTURE  BY02 MCGUIRE, 1/2 IPS X 3/8 OD, QUARTER-TURN BRASS BALL VALVE ANGLE STOP.  149 MCGUIRE, FLAT GRID STRAINER WITH 4" TAILPIECE.  8872 MCGUIRE, HEAVY CAST BRASS 1 1/4 X 1 1/4 ADJUSTABLE TRAP WITH CLEANOUT PLUG.  102-EZ-W TRUEBRO, "P" TRAP AND SUPPLY INSULATION KIT.  LFUSG-B-SC WATTS THERMOSTATIC MIXING VALVE, MIXING VALVE WITH DOUBLE THROTTLING DESING, TEMPERATURE SHALL BE SET TO 110°.
L-7	LAVATORY (WALL MOUNTED) (A.D.A.)	1 1/4"	2"	2"	1/2"	-	K-2882 KOHLER "VERTICYL", 19-3/4" RECTANGULAR UNDER COUNTER LAVATORY, VITREOUS CHINA, SINGLE HOLE CENTER MOUNTING.  EFX-250 SLOAN "BASYS", SELF-ADJUSTING SENSOR BASED, DC (CR-P2 LITHIUM BATTERY) POWERED, 0.35 GPM/1.3L/MIN PRESSURE COMPENSATING, VANDAL-RESISTANT MULTI-LAMINAR SPRAY, EASY TO SERVICE INTEGRATED STRAINER, LEAD-FREE AND SAFETY TIMER WALL-MOUNT ELECTRONIC FAUCET WITH PROXIMITY OPERATION. QUANTITY TWO PER FIXTURE  BY02 MCGUIRE, 1/2 IPS X 3/8 OD, QUARTER-TURN BRASS BALL VALVE ANGLE STOP.  149 MCGUIRE, FLAT GRID STRAINER WITH 4" TAILPIECE.  8872 MCGUIRE, HEAVY CAST BRASS 1 1/4 X 1 1/4 ADJUSTABLE TRAP WITH CLEANOUT PLUG.  102-EZ-W TRUEBRO, "P" TRAP AND SUPPLY INSULATION KIT.  LFUSG-B-SC WATTS THERMOSTATIC MIXING VALVE, MIXING VALVE WITH DOUBLE THROTTLING DESING, TEMPERATURE SHALL BE SET TO 110°.



PROJECT NAME

### AUSTIN MASJID

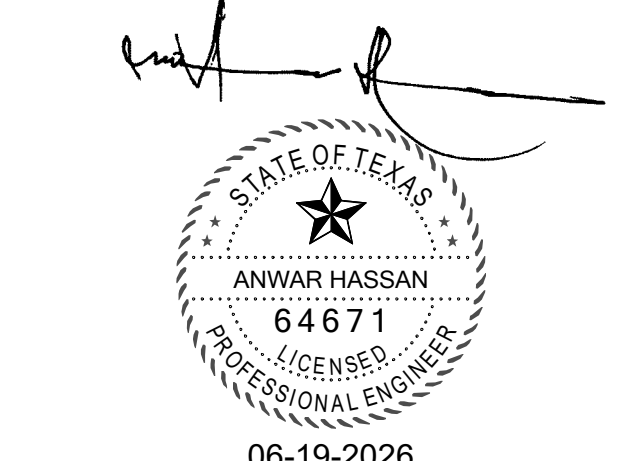
800 N Heatherwilde Boulevard, Pluegerville, TX 78660

CONSULTANTS



INFRASTRUCTURE ASSOCIATES, INC. 617 RICHMOND AVENUE, SUITE 200 HOUSTON, TEXAS 77057-4591 (713) 622-0220 PH (713) 622-0557 FAX T89E FIRM REGISTRATION #7-4506 WWW.IAHOUSTON.COM

PROFESSIONAL SEAL



ISSUED FOR

ISSUE FOR PERMIT

REVISIONS

No.	DESCRIPTION	DATE
	ISSUE FOR PERMIT	4-17-26
2	ADDENDUM 6	6-19-26

### FIXTURE SCHEDULES

SCALE

DATE 2026/04/17

PROJECT NUMBER Project Number

SHEET NUMBER

# P1.10







PROJECT NAME

**AUSTIN MASJID**

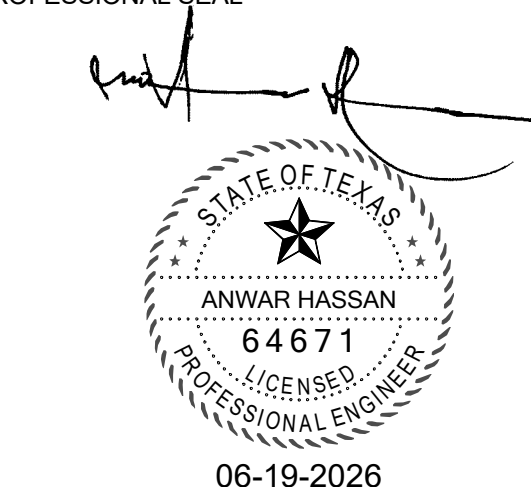
800 N Heatherwilde Boulevard,  
 Pflugerville, TX 78660

CONSULTANTS



INFRASTRUCTURE ASSOCIATES, INC.  
 6117 RICHMOND AVENUE, SUITE 200  
 HOUSTON, TEXAS 77057-4367  
 (713) 622-0220 PH (713) 622-0557 FAX  
 TUBE FIRM REGISTRATION #7-4506  
 WWW.IAHOUSTON.COM

PROFESSIONAL SEAL



ISSUED FOR

ISSUE FOR PERMIT

REVISIONS

No.	DESCRIPTION	DATE
1	ISSUE FOR PERMIT	4-17-26
2	ADDENDUM 6	6-19-26

SHEET TITLE

**SECOND FLOOR -  
 SANITARY**

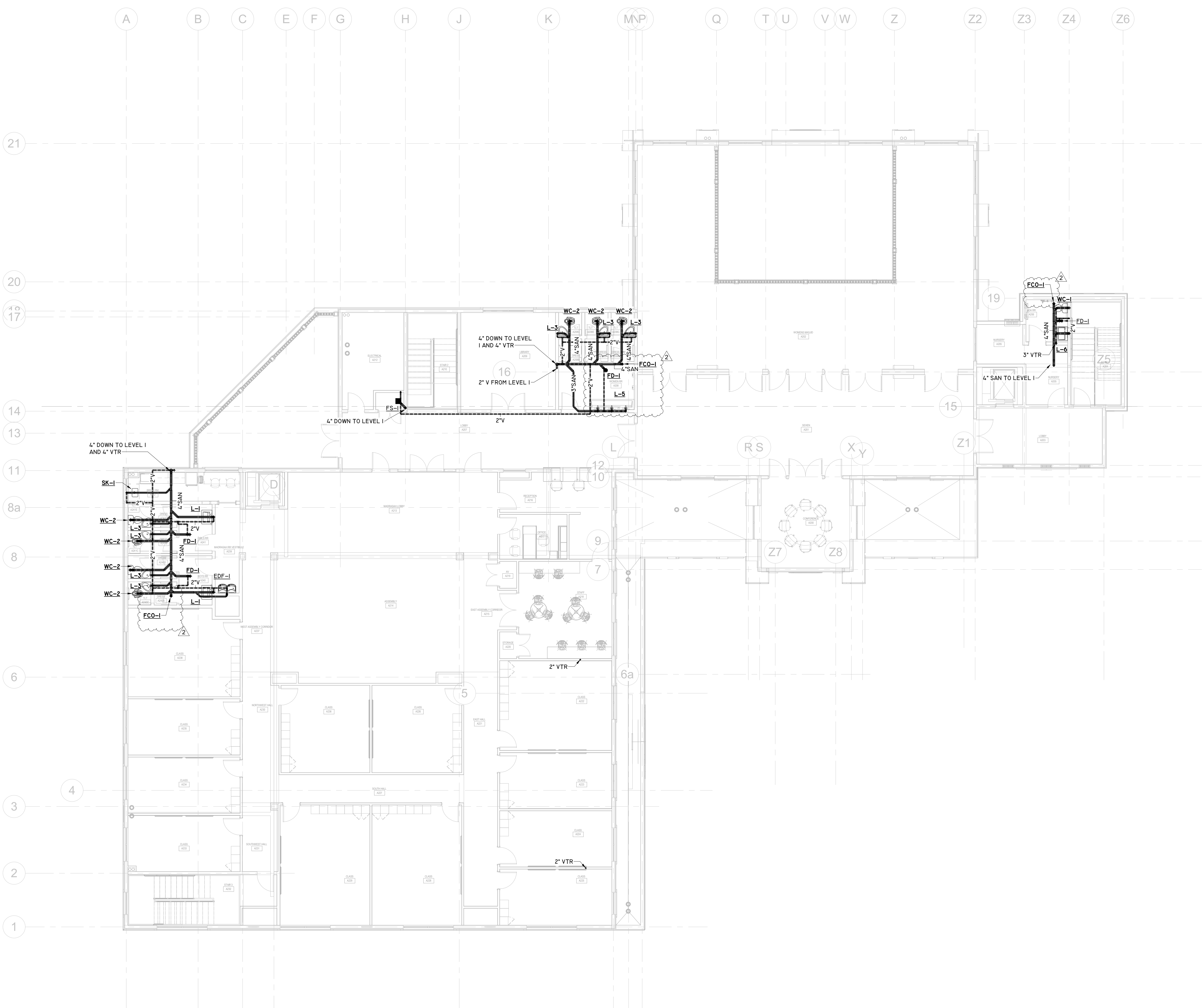
SCALE 1/8" = 1'-0"

DATE 2026/04/17

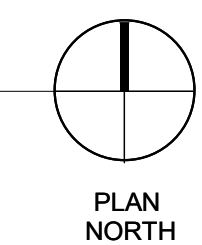
PROJECT NUMBER Project Number

SHEET NUMBER

**P3.01**



**1**  
**P3.01** SECOND FLOOR - SANITARY  
 SCALE: 1/8" = 1'-0"



PROJECT NAME

**AUSTIN MASJID**

800 N Heatherwide Boulevard,  
 Pflugerville, TX 78660

CONSULTANTS



PROFESSIONAL SEAL



ISSUED FOR

**ISSUE FOR PERMIT**

REVISIONS

No.	DESCRIPTION	DATE
2	ISSUE FOR PERMIT	4-17-26
	ADDENDUM 6	6-19-26

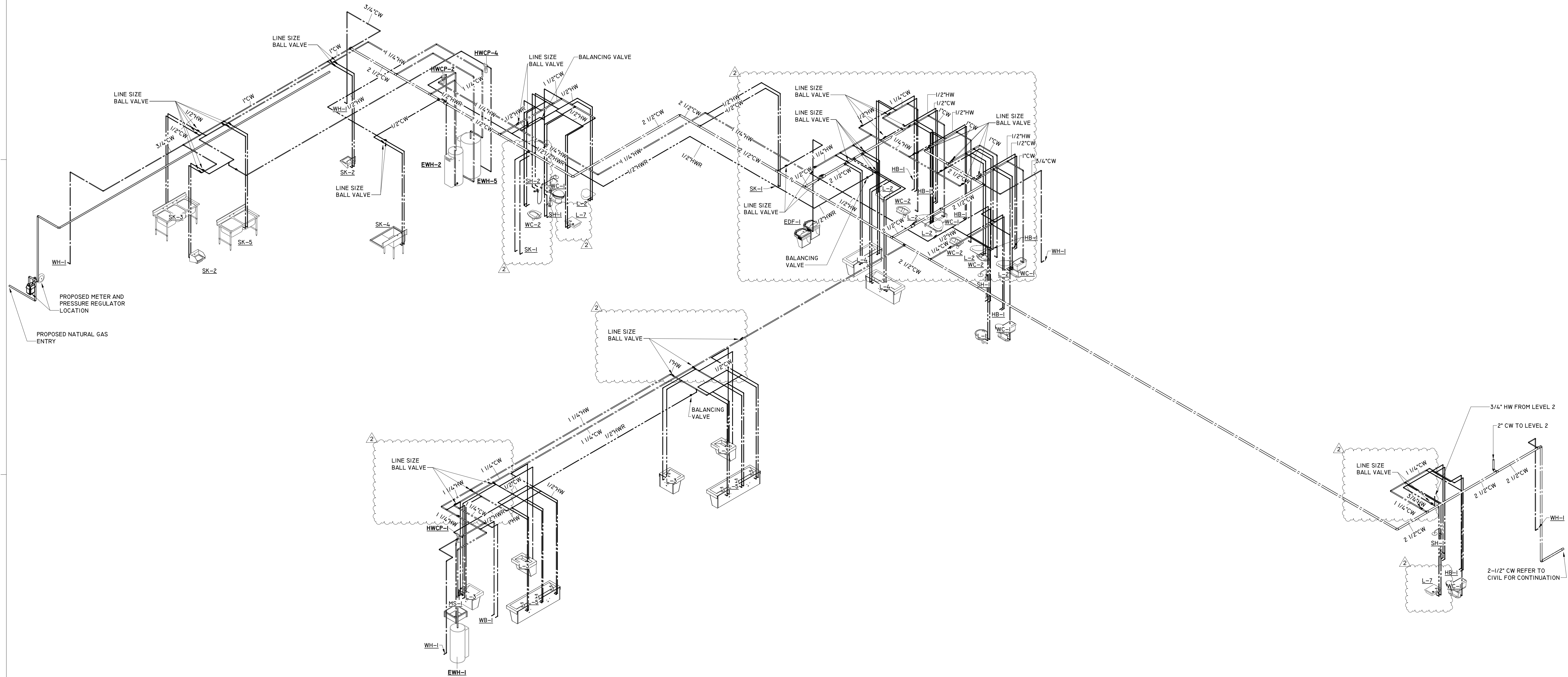
SHEET TITLE  
**FIRST FLOOR -  
 DOMESTIC RISER**

SCALE

DATE 2026/04/17

PROJECT NUMBER Project Number

SHEET NUMBER  
**P4.00**



**1 LEVEL 1 DOMESTIC RISER**  
 Scale:





