



Deck height at front of building



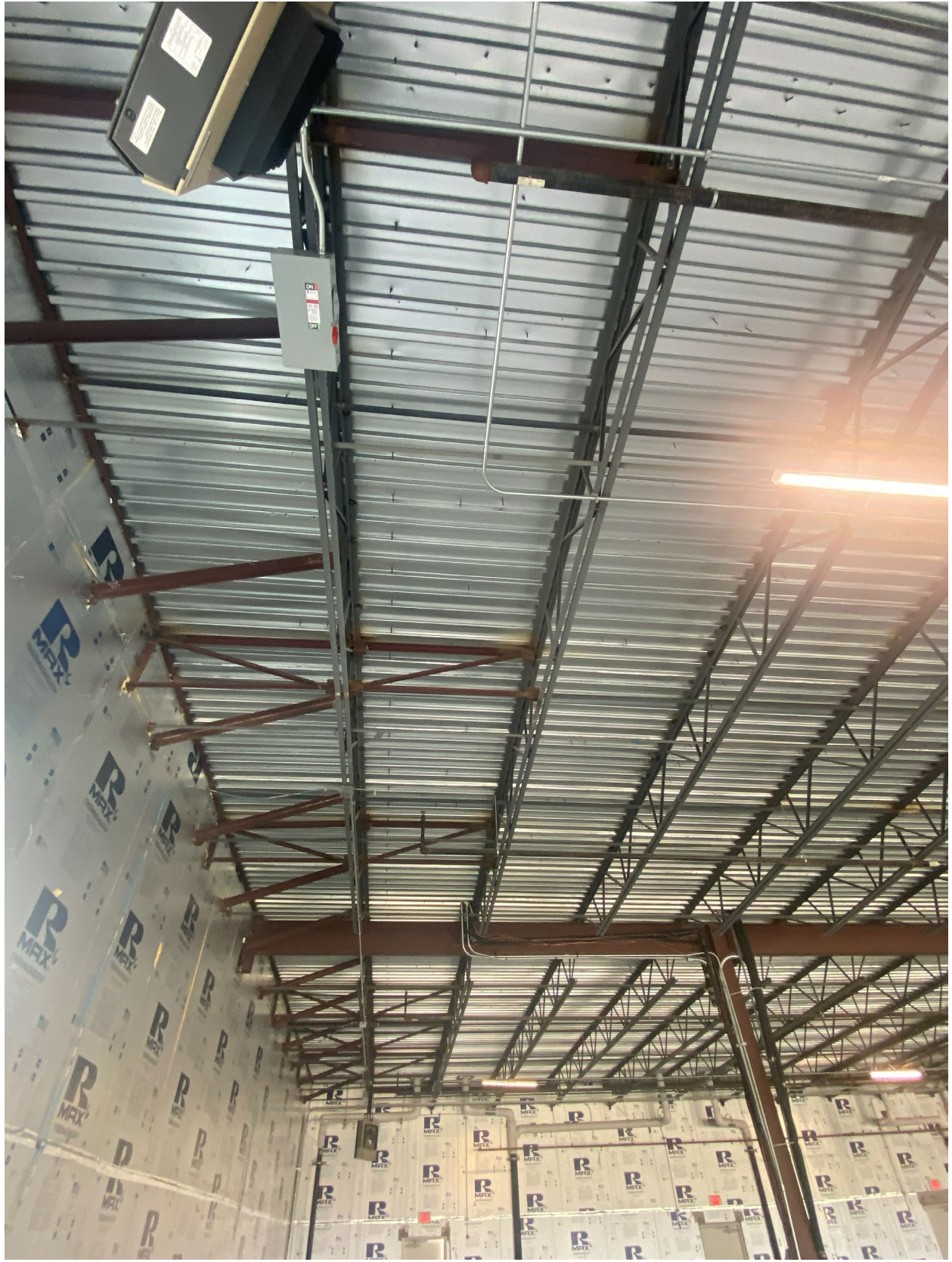
Deck height at back of building







































Plumbing at tenant space below GameDay







P POTTER
The Symbol of Protection
St. Louis, Missouri
Model Number
VSR
UL LISTED
CE
Fuses Alarm
Sensors
Extinguishing
Systems
Attachments
Cat. 125

WARNING
Hazardous Voltage May
Be Present. Disconnect
Power Before Servicing
#377383-REV 6



P **POTTER**
The Symbol of Protection

St. Louis, Missouri
Model Number



Fire Alarm
Equipment
Extinguishing
System
Attachment

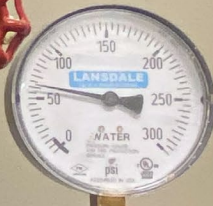
VSR



⚠ WARNING
Hazardous Voltage May
Be Present. Disconnect
Power Before Servicing
#3370383-REV B



HYDRAULIC-SYSTEM
This Building is Protected
by a Hydraulically Designed
Automatic Sprinkler System.
KOENER FIRE PROTECTION
Location **SSFCU 306 PRE-ACTION**
No. of Sprinklers **14**
Basis of Design
1. DENSITY **.15 GPM/SQ. FT.**
2. DESIGNED AREA OF DISCHARGE **1098 SQ. FT.**
System Demand
1. GPM DISCHARGE **226.60 GPM**
2. RESIDUAL PRESSURE AT THE
BASE OF THE RISER **47.970 PSI**



45
Honeywell

CONTROL VALVE

MAIN DRA

Blue tags with text, including "DO NOT OPERATE THIS VALVE"



HYDRAULIC-SYSTEM
 This Building is Protected
 by a Hydraulically Designed
 Automatic Sprinkler System.
KOCHER FIRE PROTECTION

Location SSFCU 306-LIGHT HAZARD

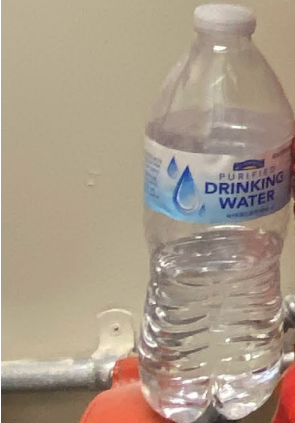
No. of Sprinklers 15

Basis of Design

1. DENSITY	.10	GPM/50 FT.
2. DESIGNED AREA OF DISCHARGE	1529	SQ. FT.

System Demand

1. GPM DISCHARGE	264.59	GPM
2. RESIDUAL PRESSURE AT THE BASE OF THE RISER	36.343	PSI



CONTROL VALVE

MAIN D



DRUM DRIP

EMERGENCY
MANUAL
RELEASE
LOCATED
INSIDE



SYSTEM
PRESSURE



WATER SUPPLY
PRESSURE

Reliable





Reliable

PFC Series
FIRE ALARM CONTROL

RELIABLE
MANUFACTURED IN
CANADA
DDX
2-1/2 INCH
65 MM

RELIABLE







RELIABLE
AUTOMATIC
SPRINKLER Co. Inc.
DDX
DOUBLE
INTERLOCK
TYPE F

2-1/2 INCH
65 MM

MAIN DRAIN

Reliable
Fire Alarm Control Panel
Model No. 1000-1000
1000-1000

RELIABLE











YOUR ALARM SYSTEM IS BEST MAINTAINED BY
ALLIED FIRE PROTECTION
1-800-272-1959
3744 510
Honeywell

FIRE ALARM PANEL L1 30

7:59
SYSTEM NORMAL

1-800-272-1959
3744 510

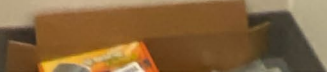
Honeywell

POWER SUPPLY

Honeywell

SYSTEM RECORD DOCUMENTS

onix



ALLIUM FIRE PROTECTION.COM
HOUSTON | SAN ANTONIO | AUSTIN | DALLAS/FORT WORTH | RIO GRANDE VALLEY | LARDO
HW-AV-LTE-M Commercial Fire Communicator
Honeywell

FIRE ALARM PANEL L1-36

FIRE ALARM CONTROL PANEL

7:59 AM
Thursday, 08/20/2020

SYSTEM NORMAL

AC

BLEND

MENU DRILL RESET

RECALL DATA

RECALL # 1

RECALL # 2

RECALL # 3

RECALL # 4

RECALL # 5

RECALL # 6

RECALL # 7

RECALL # 8

RECALL # 9

RECALL # 10

RECALL # 11

RECALL # 12

RECALL # 13

RECALL # 14

RECALL # 15

RECALL # 16

RECALL # 17

RECALL # 18

RECALL # 19

RECALL # 20

DO NOT REMOVE BY ORDER OF TEXAS STATE FIRE MARSHAL

COMMERCIAL or non-residential facility receiving fire protection and fire alarm devices or systems

INSTALLATION RECORD

J.W. Shropshire, Inc.
4010 Shaw Road, Suite 110
San Antonio, Texas 78217
210-480-8800 FAX 210-480-8801

9/14/20 [Signature]

9/14/20 [Signature]

DO NOT REMOVE BY ORDER OF TEXAS STATE FIRE MARSHAL

INSPECTION/TEST RECORD

J.W. Shropshire, Inc.
4010 Shaw Road, Suite 110
San Antonio, Texas 78217
210-480-8800 FAX 210-480-8801

9/14/20 [Signature]

DO NOT REMOVE BY ORDER OF TEXAS STATE FIRE MARSHAL

COMMERCIAL or non-residential facility receiving fire protection and fire alarm devices or systems

SERVICE RECORD

Allied Fire Protection SA, LP
2100 Broadway - San Antonio, TX 78207
210-448-8716

7/22/20 [Signature]

9/14/20 [Signature]

9/14/20 [Signature]

DO NOT REMOVE BY ORDER OF TEXAS STATE FIRE MARSHAL

INSPECTION/TEST RECORD

J.W. Shropshire, Inc.
4010 Shaw Road, Suite 110
San Antonio, Texas 78217
210-480-8800 FAX 210-480-8801

9/14/20 [Signature]

FIRE ALARM CONTROL PANEL

